



**MID-ATLANTIC**  
CATTLE SALES

*A Family Owned and Operated  
Livestock Video Auction*

**[WWW.MACSVIDEO.COM](http://WWW.MACSVIDEO.COM)**

---

**JULY 10, 2019**

Start Time: 9:30 AM edt. / 8:30 AM cdt.

Marcus Harward: 704-322-0840

Office: 704-463-5828

# Video Sale INFORMATION

Video sales are a marketing mechanism that have grown in popularity due to the opportunities they present to producers who deal in large numbers of stocker and feeder cattle. Cattle are generally marketed in trailer-load lots weighing approximately 48,500 pounds; however, we can also sell "partial loads" if there are not enough cattle to make a full trailer-load. Before the sale, a representative from MACS goes to the farm to record video of the cattle while also documenting important information about the cattle including breed, frame, muscling, and fleshing as well as health and nutrition programs. *The following catalog provides this information from our consignors and contractors to assist with marketing the consigned cattle. If you have any questions regarding the stated information, please contact a MACS representative listed throughout this catalog.*

## SALE DATE & TIME:

**July 10, 2019 - Wednesday**

**9:30 am edt. | 8:30 am cdt.**

## CONTACT:

Office .....704-463-5828

Marcus Harward .....704-322-0840

Bruce Shankle .....704-694-8686

Brooke Harward .....704-322-9770

macsvideoauction@gmail.com

## WEBSITES:

[www.MACSVideo.com](http://www.MACSVideo.com)

View catalog, videos, and additional updates online on our website.

[www.macsvideo.com/view-video](http://www.macsvideo.com/view-video)

All videos of sale cattle are posted directly on our video page listed above.

## ANNOUNCEMENTS:

Announcements made on sale day will take precedence over what is stated in the catalog.

## TERMS & CONDITIONS:

- Most loads have weight stops at 25-50 lbs. over the base weight. The individual weight stops are posted on each lot.
- Cattle that are picked up after the stated delivery dates will be subject to a 3# per day increase on the base weight and any weight stops for each day late after the last stated delivery date.
- Payment by Buyer is due to Mid-Atlantic Cattle Sales at such times as the value of the cattle is determined based on weight (subject to condition), price (subject to condition), and any other conditions stated at time of sale. All payment due will be in accordance with USDA P & S prompt pay policy.



Family owned and operated since 2010

## Bidding Options

We want to offer you the best opportunities we can to participate in our sales each month. Below are three options for bidding on the sale.

### 1. Conference Call

The most common resource used is our conference call line. Contact Marcus or Brooke prior to the sale to receive a buyer's number. After 9:15 est. on sale day, you can call the auction number to listen and bid on the sale. *Please keep background noise to a minimum as we will have multiple people on the line.*

**CALL-IN NUMBER: 1-866-906-9888**

**PASSCODE: 9461720 #**

When asked for your name, you may state your name OR simply press the # sign to enter the call.

**To mute your phone, press \*6. To un-mute, press \*6 again.**



### 2. Internet Viewing & Bidding

To view the sale or bid online, visit [www.DVAuction.com](http://www.DVAuction.com). Find the "Mid-Atlantic Cattle Sales (Richfield, NC)" sale and click on "Details." From this page you can view the catalog, videos, or log in to watch the sale. If you have an account, log in and view the sale. If you do not, you must create an account under the "Create New Account" tab in the upper left hand corner of the screen. You will need to confirm this account through your e-mail. It is best to do this at least a day before the sale.

**You DO NOT have to be approved just to watch the sale but you will still need to create an account with DVAuction.**

**To register for a buyer's number, call Brooke at 704-322-9770 prior to the sale to be approved to bid online.**

### 3. Absentee Bidding

For people who can not view the sale at sale time, we have independent contractors who can assist you with absentee bidding. Contact Marcus at 704-322-0840 for more information.

*"Let us then approach God's throne of grace with confidence, so that we may receive mercy and find grace to help us in our time of need."*

**Hebrews 4:16 (NIV)**



# TABLE OF CONTENTS - JULY 10, 2019

Video Sale Information Page 2

Table of Contents Page 3

Lot 9111	1 Load	Steers	600 lbs.	Big Oak Farm	Page 4
Lot 9112	1 Load	Heifers	575 lbs.	Big Oak Farm	Page 4

Lot 9113	1 Load	Steers	670 lbs.	Hardwick Farms <b>**All-Natural**</b>	Page 5
Lot 9114	1 Load	Steers Heifers	575 lbs. 535 lbs.	Hardwick Farms <b>**All-Natural**</b>	Page 5

Lot 9115	1 Load	Steers	675 lbs.	Double M Ranch & Underwood Cattle	Page 6
Lot 9116	1 Load	Heifers	635 lbs.	Double M Ranch & Underwood Cattle	Page 6
Lot 9117	1 Load	Steers Heifers	540 lbs. 500 lbs.	Double M Ranch & Underwood Cattle	Page 6

Lot 9118 1 Load Steers 650 lbs. Son Rise Plantation **\*\*All-Natural\*\*** Page 7

Lot 9119 1 Load Steers 650 lbs. Donald Chriscoe Farm Page 7

Lot 9120 1 Load Steers 700 lbs. Hy-Hope Farms **\*\*All-Natural\*\*** Page 8

Lot 9121 1 Load Steers 710 lbs. Allen Farms Page 8

Lot 9122 1 Load Steers 760 lbs. Thrailkill Farms Page 9

Lot 9123 <sup>3</sup>/<sub>4</sub> Load Heifers 620 lbs. Dixon Family Farm Page 9

Lot 9124 1 Load Heifers 580 lbs. Donald Chriscoe Farm Page 10

Lot 9125 1 Load Heifers 680 lbs. Donald Chriscoe Farm Page 10

Lot 9126 1 Load Heifers 785 lbs. Ridgecrest Farms Page 11

Lot 9127 1 Load Steers 680 lbs.  
Heifers 645 lbs. Fall-Line Farms **\*\*All-Natural\*\*** Page 11

Lot 9128 1 Load Steers 695 lbs.  
Heifers 640 lbs. Naked Creek Cattle Co Page 12

Lot 9129 1 Load Steers 725 lbs.  
Heifers 660 lbs. Wes Knight **\*\*All-Natural\*\*** Page 12

Lot 9130 1 Load Steers 740 lbs.  
Heifers 670 lbs. Willow Springs Farm **\*\*All-Natural\*\*** Page 13

Upcoming Video Sale Schedule Page 14

Graded Feeder Calf Sale Schedule Page 15

Most loads have weight stops at 25-50 lbs. over the base weight. The individual weight stops are posted on each lot. Cattle that are picked up after the stated delivery dates will be subject to a 3# per day increase on the base weight and any weight stops for each day late after the last stated delivery date.

**Lots 9111-9112: Big Oak Farm - Joel Sexton**

*Home-Raised, Pre-Conditioned, BQA Certified, Not Weaned*

An excellent set of home-raised, Angus-based calves that have all been vaccinated and dewormed while still on the cow. There are 200+ head to sort two loads out of. They are predominantly Angus-sired by SAV Final Answer sons; the remaining calves are sired by Hereford bulls. A very fancy set of reputational, Northern-type steers and heifers carrying just a medium-grass flesh.

***We need to load both loads out on the same day.***

**Lot 9111 STEERS - 1 Load**

Price: \$ \_\_\_\_\_ Buyer # \_\_\_\_\_

**Base Weight:** 600 lbs. **Wt Stop:** 640 lbs. **Variance:** 125 lbs.  
**Contractor:** Marcus Harward • 704-322-0840



**Big Oak Farm - Joel Sexton**  
 Denton, NC  
 20 miles west of Asheboro, NC

BLK/BWF	100%	#1	98%	FRAME: Medium
CH-X		#1 <sup>1/2</sup>	2%	
RED		#2		FLESH: Medium
RWF				
Other				

**Delivery Date:** July 22 - 26 **Shrink:** 2%  
**Notice to load:** 48 hours **Slide:** \$8/cwt topside only



**Conditions:** Cattle will be hauled 15 miles and weighed on the truck on Certified Scales. All calves will be separated from the cow the morning of load out, sorted, and then loaded and weighed.

**Nutrition:** On the momma cow with pasture and free choice minerals.

**Vaccinations:** Vira-Shield 6 (2x), Ultrabac 7 (2x)

**Implants:** Ralgro (1x) **Dewormer:** Ivomec (2x)

**Genetics:** Majority Angus genetics-sired by Angus or Hereford bulls, out of Angus or Angus-x-Hereford cows.

**Lot 9112 HEIFERS - 1 Load**

Price: \$ \_\_\_\_\_ Buyer # \_\_\_\_\_

**Base Weight:** 575 lbs. **Wt Stop:** 615 lbs. **Variance:** 125 lbs.  
**Contractor:** Marcus Harward • 704-322-0840



**Big Oak Farm - Joel Sexton**  
 Denton, NC  
 20 miles west of Asheboro, NC

BLK/BWF	100%	#1	98%	FRAME: Medium
CH-X		#1 <sup>1/2</sup>	2%	
RED		#2		FLESH: Medium
RWF				
Other				

**Delivery Date:** July 22 - 26 **Shrink:** 2%  
**Notice to load:** 48 hours **Slide:** \$8/cwt topside only



**Conditions:** Cattle will be hauled 15 miles and weighed on the truck on Certified Scales. All calves will be separated from the cow the morning of load out, sorted, and then loaded and weighed.

**Nutrition:** On the momma cow with pasture and free choice minerals.

**Vaccinations:** Vira-Shield 6 (2x), Ultrabac 7 (2x)

**Implants:** None **Dewormer:** Ivomec (2x)

**Genetics:** Majority Angus genetics-sired by Angus or Hereford bulls, out of Angus or Angus-x-Hereford cows.

*Cattle that are picked up after the stated delivery dates will be subject to a 3# per day increase on the base weight and any weight stops for each day late after the last stated delivery date.*

**Lots 9113-9114: Hardwick Farms - John Hardwick***Home-Raised, Backgrounded, Weaned, BQA Certified, All-Natural***All**NATURAL**\*\*Update from Print Catalog\*\***

A fancy set of home-raised, all-natural, weaned calves. Calves have all been double vaccinated with the Merck PrimeVAC program and weaned. Calves are all at least 75% Angus and are sired by Angus or SimAngus bulls. These calves were born the fall of 2018 and the first week of may - they will be weaned for 60+ days at delivery.

**Lot 9113 STEERS - 1 Load (76 head)**

Price: \$ \_\_\_\_\_ Buyer # \_\_\_\_\_

**Base Weight:** 670 lbs. **Wt Stop:** 715 lbs. **Variance:** 125 lbs.**Contractor:** Bruce Shankle • 704-694-8686**Hardwick Farms - John Hardwick**

Tabor City, NC

7 miles north of NC/SC line and 40 miles east of I-95

<b>BLK/BWF</b>	74 hd.	<b>#1</b>	100%	<b>FRAME:</b> Medium
<b>CH-X</b>		<b>#1<sup>1/2</sup></b>		
<b>RED</b>	2 hd.	<b>#2</b>		<b>FLESH:</b> Medium
<b>RWF</b>				
<b>Other</b>				

**Delivery Date:** July 15 - 19**Shrink:** 2%**Notice to load:** 48 hours**Slide:** \$6/cwt topside only**Conditions:** Hauled 10 miles, weighed on the truck.**Nutrition:** Free choice TMR - Purina protein supplement, oats, and corn with free choice mineral and hay.**Vaccinations:** Vista Once (1x), Vista 5 (1x), Vision 7 w/ somnus (1x), Vision 7 (1x)**Implants:** None**Dewormer:** Dectomax (1x)**Genetics:** Calves are 75% or more Angus. Sired by Angus and SimAngus bulls.
**PrimeVAC**  
 BY MERCK ANIMAL HEALTH
**Lot 9114 STEERS & HEIFERS - 1 Load**

Price: \$ \_\_\_\_\_ Buyer # \_\_\_\_\_

**20 Strs - Wt:** 575 lbs. **Wt Stop:** 620 lbs. **Variance:** 100 lbs.**68 Hfrs - Wt:** 535 lbs. **Wt Stop:** 580 lbs. **Variance:** 120 lbs.**Contractor:** Bruce Shankle • 704-694-8686**Hardwick Farms - John Hardwick**

Tabor City, NC

7 miles north of NC/SC line and 40 miles east of I-95

<b>BLK/BWF</b>	87 hd.	<b>#1</b>	100%	<b>FRAME:</b> Medium
<b>CH-X</b>		<b>#1<sup>1/2</sup></b>		
<b>RED</b>	1 hd.	<b>#2</b>		<b>FLESH:</b> Medium
<b>RWF</b>				
<b>Other</b>				

*Heifers sell \$.08 back.***Delivery Date:** July 15 - 19**Shrink:** 2%**Notice to load:** 48 hours**Slide:** \$8/cwt topside only**Conditions:** Hauled 10 miles, weighed on the truck.**Nutrition:** Free choice TMR - Purina protein supplement, oats, and corn with free choice mineral and hay.**Vaccinations:** Vista Once (1x), Vista 5 (1x), Vision 7 w/ somnus (1x), Vision 7 (1x)**Implants:** None**Dewormer:** Dectomax (1x)**Genetics:** Calves are 75% or more Angus. Sired by Angus and SimAngus bulls.**Other:** Heifers guaranteed open.
**PrimeVAC**  
 BY MERCK ANIMAL HEALTH


*Cattle that are picked up after the stated delivery dates will be subject to a 3# per day increase on the base weight and any weight stops for each day late after the last stated delivery date.*



**Lots 9115-9117: Double M Ranch & Underwood Cattle**  
 Siler City, NC 30 miles southeast of Greensboro, NC



Gary Moon & Lee Underwood do an excellent job with these calves. The following three loads are fancy, pre-conditioned calves. Majority of the calves are at least 75% Angus with 25% or less Continental, mainly sired by top performing Angus and SimAngus bulls. They have all been double vaccinated with the Merck PrimeVAC program. Over 90% of the calves were born in a 90 day window. All calves are broke to automatic waters. These calves are reputational cattle as both farms have been selling truckload lots for 25+ years. **All loads must be loaded out on Tuesday, July 30.**

- **Weighing Conditions:** Calves will be separated from the cow that morning - hauled 20 miles to a local sorting barn, unloaded, sorted, and weighed on the ground on Certified Scales. Trucks will not be ready to load until 12:00 or later.
- **Nutrition:** On the momma cow with pasture, hay, and free choice minerals.
- **Vaccinations:** Vista Once (1x), Vista 5 (1x), Ultrabac 7 (2x). Implanted with Synovex C.
- **Dewormer:** Dectomax. Ultra Boss Pour-On.



**Lot 9115 STEERS - 1 Load**

Price: \$ \_\_\_\_\_ Buyer # \_\_\_\_\_

**Base Weight:** 675 lbs. **Wt Stop:** 715 lbs. **Variance:** 175 lbs.  
**Contractor:** Marcus Harward • 704-322-0840



<b>BLK/BWF</b>	88%	<b>#1</b>	95%	<b>FRAME:</b> Medium
<b>CH-X</b>	5%	<b>#1<sup>1/2</sup></b>	5%	
<b>RED/RWF</b>	5%	<b>#2</b>		<b>FLESH:</b> Medium
<b>RWF</b>				
<b>Other</b>	2%			

*Could be 1-2 shorthorn cross calves on the load*

**Delivery Date:** July 30 **Shrink:** None **Slide:** \$8/cwt topside only  
 Home-Raised, Vaccinated, BQA Certified. **Not Weaned.**

**Lot 9116 HEIFERS - 1 Load**

Price: \$ \_\_\_\_\_ Buyer # \_\_\_\_\_

**Base Weight:** 635 lbs. **Wt Stop:** 675 lbs. **Variance:** 175 lbs.  
**Contractor:** Marcus Harward • 704-322-0840



<b>BLK/BWF</b>	88%	<b>#1</b>	95%	<b>FRAME:</b> Medium
<b>CH-X</b>	5%	<b>#1<sup>1/2</sup></b>	5%	
<b>RED/RWF</b>	5%	<b>#2</b>		<b>FLESH:</b> Medium
<b>RWF</b>				
<b>Other</b>	2%			

*Could be 1-2 shorthorn cross calves on the load*

**Delivery Date:** July 30 **Shrink:** None **Slide:** \$8/cwt topside only  
 Home-Raised, Vaccinated, BQA Certified. **Not Weaned.**

**Lot 9117 STEERS & HEIFERS - 1 Load**

Price: \$ \_\_\_\_\_ Buyer # \_\_\_\_\_

**Strs Weight:** 540 lbs. **Wt Stop:** 580 lbs. **Variance:** 150 lbs.  
**Hfrs Weight:** 500 lbs. **Wt Stop:** 540 lbs. **Variance:** 150 lbs.  
**Contractor:** Marcus Harward • 704-322-0840



<b>BLK/BWF</b>	88%	<b>#1</b>	95%	<b>FRAME:</b> Medium
<b>CH-X</b>	5%	<b>#1<sup>1/2</sup></b>	5%	
<b>RED/RWF</b>	5%	<b>#2</b>		<b>FLESH:</b> Medium
<b>RWF</b>				
<b>Other</b>	2%			

*Could be 1-2 shorthorn cross calves on the load*

**Delivery Date:** July 30 **Shrink:** None **Slide:** \$10/cwt topside only  
 Home-Raised, Vaccinated, BQA Certified. **Not Weaned.**

**Heifers sell \$.10 back.**

**Lot 9118 STEERS - 1 Load (75 head)**

Price: \$ \_\_\_\_\_ Buyer # \_\_\_\_\_

Base Weight: 650 lbs. Wt Stop: 675 lbs. Variance: 125 lbs.  
 Contractor: David Landreth • 864-444-8214

**Son Rise Plantation - Alton Johnson**  
 Warrenton, GA  
 45 miles west of Augusta, GA

BLK/BWF	73 hd.	#1	95%	FRAME: Medium
CH-X	2 hd.	#1 <sup>1/2</sup>	5%	
RED		#2		FLESH: Medium
RWF				
Other				



Delivery Date: July 15 - 19

Shrink: 2%

Notice to load: 48 hours

Slide: \$6/cwt topside only

Conditions: Weighed on the truck on Certified Scales.

Nutrition: 9# of 14% TMR - gluten, soyhulls, cracked corn with free choice mineral, pasture, and hay.

Vaccinations: Pyramid 10 (2x), Pyramid 5 w/ presponse (1x), Vision 7 w/ somnus (2x)

Implants: None

Dewormer: Dectomax Inject (1x)

Genetics: Predominantly Angus. Angus-based cows (a couple Char-x), sired by Angus bulls.

Other: Weaned 60+ days. Bunk broke.



AllNATURAL

**Home-Raised, All-Natural, Backgrounded, Weaned, BQA Certified. Pending GAP Certification.**

A fancy load of home-raised, all-natural steers that are very docile. Calves are weaned 60+ days at time of delivery and have been double vaccinated. Calves are bunk broke, getting hand fed. Calves qualify as all-natural and will be GAP Certified pending an upcoming audit. An excellent set of steers that are ready to go to feed.

**Lot 9119 STEERS - 1 Load**

Price: \$ \_\_\_\_\_ Buyer # \_\_\_\_\_

Base Weight: 650 lbs. Wt Stop: 675 lbs. Variance: 125 lbs.  
 Contractor: Marcus Harward • 704-322-0840

**Donald Chriscoe Farm**

Asheboro, NC  
 40 miles south of Greensboro, NC

BLK/BWF	92%	#1	90%	FRAME: Medium
CH-X	4%	#1 <sup>1/2</sup>	10%	
RED	4%	#2		FLESH: Medium
RWF				
Other				



Delivery Date: July 11 - 19

Shrink: 2%

Notice to load: 24 - 48 hours

Slide: \$6/cwt topside only

Conditions: Weighed on the ground on Certified Scales.

Nutrition: Haylage and DDG TMR with access to mineral, hay, and some pasture.

Vaccinations: Vista 5 (2x), Nuplura (1x), Vision 7 20/20 (1x), Occuguard Pinkeye

Implants: None

Dewormer: Ivomec Inject (2x)

Genetics: Angus-X commercial. Sired by Angus and SimAngus bulls.

Other: Weaned 90+ days. Bunk broke, broke to waters.

**Backgrounded, Weaned, BQA Certified**

A very good set of reputational steers from Donald Chriscoe. They have been weaned for over 90 days, are bunk broke, broke to Ritchie waters, and under a good health program. They were purchased from local producers, mainly using high-quality Angus bulls on Angus-X cows.

*Cattle that are picked up after the stated delivery dates will be subject to a 3# per day increase on the base weight and any weight stops for each day late after the last stated delivery date.*



**Lot 9120 STEERS - 1 Load**

Price: \$ \_\_\_\_\_ Buyer # \_\_\_\_\_

**Base Weight:** 700 lbs. **Wt Stop:** 725 lbs. **Variance:** 100 lbs.  
**Contractor:** David Landreth • 864-444-8214


**Hy-Hope Farms - Doug Heydt**  
 Newberry, SC  
 40 miles northwest of Columbia, SC

<b>BLK/BWF</b> 96%	<b>#1</b> 95%	<b>FRAME:</b> Medium
<b>CH-X</b> 3 hd.	<b>#1<sup>1/2</sup></b> 5%	
<b>RED</b>	<b>#2</b>	<b>FLESH:</b> Medium
<b>RWF</b>		
<b>Other</b>		



**Delivery Date:** July 22 - 26 **Shrink:** 2%  
**Notice to load:** 48 hours **Slide:** \$5/cwt topside only  
**Conditions:** Weighed on the farm on Certified Scales.  
**Nutrition:** 6# per day of 13% CPC feed with free choice mineral, pasture, and hay.  
**Vaccinations:** Vista 5 (1x), Vista Once (1x), Vision 7 w/somnus (2x)  
**Implants:** None **Dewormer:** LongRange (1x), Ivomec Pour-On (2x)  
**Genetics:** +75% Angus. Angus-based cows (a couple Char-x), sired by Angus bulls from Black Grove Angus.  
**Other:** Weaned 60+ days. Bunk broke.



**Home-Raised, All-Natural, Backgrounded, Weaned, BQA Certified. Pending GAP Certification.**   
 A fancy load of home-raised, all-natural steers. Calves are bunk broke, very docile, and will be weaned 60+ days at delivery. They are sired by Angus bulls and are high percentage Angus. Calves qualify as all-natural and will be GAP Certified pending an upcoming audit. An excellent load of steers for late July delivery.

**Lot 9121 STEERS - 1 Load**

Price: \$ \_\_\_\_\_ Buyer # \_\_\_\_\_

**Base Weight:** 710 lbs. **Wt Stop:** 740 lbs. **Variance:** 180 lbs.  
**Contractor:** Bruce Shankle • 704-694-8686

**Allen Farms - Scotty Allen**  
 Polkton, NC - 12 miles south of Norwood, NC  
 30 miles east of Charlotte, NC

<b>BLK/BWF</b> 100%	<b>#1</b> 97%	<b>FRAME:</b> Medium
<b>CH-X</b>	<b>#1<sup>1/2</sup></b> 3%	
<b>RED</b>	<b>#2</b>	<b>FLESH:</b> Medium
<b>RWF</b>		
<b>Other</b>		



**Delivery Date:** July 12 - 19 **Shrink:** 2%  
**Notice to load:** 24 - 48 hours **Slide:** \$5/cwt topside only  
**Conditions:** Weighed on the farm on Certified Scales.  
**Nutrition:** 16# per day of Southern States Powerstroke with free choice mineral, pasture, and hay.  
**Vaccinations:** Vista 5 (1x), Vista Once (1x), Vision 7 w/somnus (1x), Vision 7 (1x)  
**Implants:** Ralgro (1x) **Dewormer:** LongRange (1x)  
**Genetics:** \*Update from Print Catalog\* +75% Angus. Out of high % Angus cows, sired by Angus bulls - some AI sired.  
**Other:** Weaned 60+ days. Bunk broke.



**Home-Raised, Backgrounded, Weaned, BQA Certified.**  
 An excellent set of predominantly Angus steers. Calves are all Angus-sired by high-growth, excellent \$B carcass bulls. Genetics include CC&7, Safeguard, Tour of Duty, GAR Prophet, etc. The cow herd is also mostly Angus with many AI-sired cows. Calves were all born Sep-Oct 2018 and weaned the first week of May. There are 100 steers to pick a load out of. An excellent set of reputational, Angus steers ready for feed.

*Cattle that are picked up after the stated delivery dates will be subject to a 3# per day increase on the base weight and any weight stops for each day late after the last stated delivery date.*



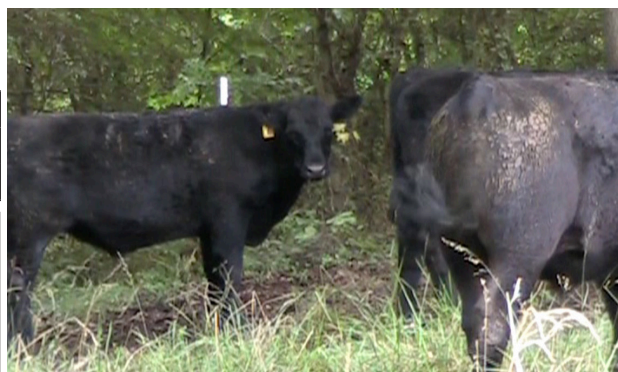
**Lot 9122 STEERS - 1 Load**

Price: \$ \_\_\_\_\_ Buyer # \_\_\_\_\_

**Base Weight:** 760 lbs. **Wt Stop:** 795 lbs. **Variance:** 130 lbs.  
**Contractor:** Bruce Shankle • 704-694-8686

**Thrailkill Farms - Earl Thrailkill**  
 Fort Lawn, SC  
 30 miles south of Charlotte, NC

<b>BLK/BWF</b> 96%	<b>#1</b> 98%	<b>FRAME:</b> Medium
<b>CH-X</b> 2 hd.	<b>#1<sup>1/2</sup></b> 2%	
<b>RED</b>	<b>#2</b>	<b>FLESH:</b> Medium
<b>RWF</b>		
<b>Other</b>		

**Delivery Date:** July 12 - 19**Shrink:** 2%**Notice to load:** 48 hours**Slide:** \$5/cwt topside only**Conditions:** Weighed on the ground on Certified Scales.**Nutrition:** Free choice CPC 14% grower feed with free choice mineral and pasture.**Vaccinations:** Vista Once (1x), Vision 8 w/spur (1x)**Implants:** None**Dewormer:** LongRange (1x)**Genetics:** Angus-sired out of mainly black Angus-x-Continental cows. A few with just a flick of ear.**Other:** Weaned 75+ days.

**PrimeVAC**  
 BY MERCK ANIMAL HEALTH

**Home-Raised, Backgrounded, Weaned, BQA Certified.**

An very good set of home-raised, backgrounded steers. Calves were all born from Sep. 18, 2018 to Oct. 25, 2018 and weaned on May 1. They are a docile group. They are all Angus-sired with just a couple with a flick of ear. An excellent set of backgrounded steers out of high-performance genetics ready to go out soon after the sale.

**Lot 9123 HEIFERS - 3/4 Load (62 head)**

Price: \$ \_\_\_\_\_ Buyer # \_\_\_\_\_

**Base Weight:** 620 lbs. **Wt Stop:** 650 lbs. **Variance:** 150 lbs.  
**Contractor:** Marcus Harward • 704-322-0840

**Dixon Family Farms**  
 Graham, NC  
 20 miles east of Greensboro, NC

<b>BLK/BWF</b> 100%	<b>#1</b> 80%	<b>FRAME:</b> Medium
<b>CH-X</b>	<b>#1<sup>1/2</sup></b> 20%	
<b>RED</b>	<b>#2</b>	<b>FLESH:</b> Medium
<b>RWF</b>		
<b>Other</b>		

**Delivery Date:** July 11 - 19**Shrink:** 2%**Notice to load:** 48 hours**Slide:** \$6/cwt topside only**Conditions:** Hauled 5 miles and weighed on the truck.**Nutrition:** A little silage with grain on top with pasture grass, hay, and free choice minerals.**Vaccinations:** Bovi-Shield Gold One Shot (1x), Bovi-Shield Gold 5 (1x), Ultrabac 7 (2x)**Implants:** None**Dewormer:** Ivomec Injectable**Genetics:** Angus-X commercial. Sired by Angus and SimAngus bulls.**Other:** Weaned 90+ days. Bunk broke, broke to waters.

**SelectVAC**

**Backgrounded, Weaned, BQA Certified**

A very good set of backgrounded, just medium grass-flesh heifers. Calves were purchased as 3 & 4 weights. They have been running on grass with just a little silage and grain. Calves would work to go to a grazing program or feed. Could be a couple with blue eyes. A fancy set of 62 heifers at about 38,000 lbs.

*Cattle that are picked up after the stated delivery dates will be subject to a 3# per day increase on the base weight and any weight stops for each day late after the last stated delivery date.*

**Lot 9124 HEIFERS - 1 Load**

Price: \$ \_\_\_\_\_ Buyer # \_\_\_\_\_

**Base Weight:** 580 lbs. **Wt Stop:** 605 lbs. **Variance:** 125 lbs.  
**Contractor:** Marcus Harward • 704-322-0840

**Donald Chriscoe Farm**  
 Asheboro, NC  
 40 miles south of Greensboro, NC

<b>BLK/BWF</b> 92%	<b>#1</b> 90%	<b>FRAME:</b> Medium
<b>CH-X</b> 4%	<b>#1<sup>1/2</sup></b> 10%	
<b>RED</b> 4%	<b>#2</b>	<b>FLESH:</b> Medium
<b>RWF</b>		
<b>Other</b>		



**Delivery Date:** July 11 - 19 **Shrink:** 2%  
**Notice to load:** 24 - 48 hours **Slide:** \$6/cwt topside only  
**Conditions:** Weighed on the ground on Certified Scales.  
**Nutrition:** Haylage and DDG TMR with access to mineral, hay, and some pasture.  
**Vaccinations:** Vista 5 (2x), Nuplura (1x), Vision 7 20/20 (1x), Occuguard Pinkeye  
**Implants:** None **Dewormer:** Ivomec Inject (2x)  
**Genetics:** Angus-X commercial. Sired by Angus and SimAngus bulls.  
**Other:** Weaned 90+ days. Bunk broke, broke to waters.



**Backgrounded, Weaned, Guaranteed Open, BQA Certified**

A very good set of reputational heifers from Donald Chriscoe. They have been weaned for over 90 days, are bunk broke, broke to Ritchie waters, and under a good health program. They have been sleeved and will be guaranteed open. They were purchased from local producers, mainly using high-quality Angus bulls on Angus-X cows.

**Lot 9125 HEIFERS - 1 Load**

Price: \$ \_\_\_\_\_ Buyer # \_\_\_\_\_

**Base Weight:** 680 lbs. **Wt Stop:** 705 lbs. **Variance:** 125 lbs.  
**Contractor:** Marcus Harward • 704-322-0840

**Donald Chriscoe Farm**  
 Asheboro, NC  
 40 miles south of Greensboro, NC

<b>BLK/BWF</b> 92%	<b>#1</b> 90%	<b>FRAME:</b> Medium
<b>CH-X</b> 4%	<b>#1<sup>1/2</sup></b> 10%	
<b>RED</b> 4%	<b>#2</b>	<b>FLESH:</b> Medium
<b>RWF</b>		
<b>Other</b>		



**Delivery Date:** July 11 - 19 **Shrink:** 2%  
**Notice to load:** 24 - 48 hours **Slide:** \$6/cwt topside only  
**Conditions:** Weighed on the ground on Certified Scales.  
**Nutrition:** Haylage and DDG TMR with access to mineral, hay, and some pasture.  
**Vaccinations:** Vista 5 (2x), Nuplura (1x), Vision 7 20/20 (1x), Occuguard Pinkeye  
**Implants:** None **Dewormer:** Ivomec Inject (2x)  
**Genetics:** Angus-X commercial. Sired by Angus and SimAngus bulls.  
**Other:** Weaned 90+ days. Bunk broke, broke to waters.



**Backgrounded, Weaned, Guaranteed Open, BQA Certified**

A very good set of reputational heifers from Donald Chriscoe. They have been weaned for over 90 days, are bunk broke, broke to Ritchie waters, and under a good health program. They have been sleeved and will be guaranteed open. They were purchased from local producers, mainly using high-quality Angus bulls on Angus-X cows.



**Lot 9126 HEIFERS - 1 Load (66 head)**

Price: \$ \_\_\_\_\_ Buyer # \_\_\_\_\_

**Base Weight:** 785 lbs. **Wt Stop:** 815 lbs. **Variance:** 125 lbs.  
**Contractor:** Mark Bray • 276-952-5630

**Ridgecrest Farms**

Lawsonville, NC

35 miles north of Winston-Salem, NC

<b>BLK/BWF</b>	57 hd.	<b>#1</b>	95%	<b>FRAME:</b> Medium
<b>CH-X</b>	6 hd.	<b>#1<sup>1/2</sup></b>	5%	
<b>RED</b>	3 hd.	<b>#2</b>		<b>FLESH:</b> Medium
<b>RWF</b>				
<b>Other</b>				

**Delivery Date:** July 11 - 19**Shrink:** 2%**Notice to load:** 24 hours**Slide:** \$5/cwt topside only**Conditions:** Weighed on the ground on Certified Scales.**Nutrition:** Grazing rye and fed a TMR chopped hay, cotton, & corn gluten with access to minerals.**Vaccinations:** Vista Once (1x), Bovi-Shield Gold 5 (1x), Vision 7 (2x)**Implants:** Ralgro (1x - 100+ days ago)**Dewormer:** Dectomax Pour-On (1x), Safeguard**Genetics:** Predominantly Angus-X genetics, sired by Angus, Balancer, or SimAngus bulls.**Other:** Weaned 90+ days. Bunk broke, broke to waters.**Backgrounded, Weaned, Guaranteed Open, BQA Certified**

An excellent load of reputational heifers that have been backgrounded and under a good health management program. Heifers have been palpated by Rocky Creek Vets, guaranteed open. Several of these heifers are home-raised from the Ridgecrest Farms herd. A fancy load ready to go to feed.

**Lot 9127 STEERS & HEIFERS - 1 Load**

Price: \$ \_\_\_\_\_ Buyer # \_\_\_\_\_

**45 Strs - Wt:** 680 lbs. **Wt Stop:** 700 lbs. **Variance:** 150 lbs.**23 Hrs - Wt:** 645 lbs. **Wt Stop:** 665 lbs. **Variance:** 150 lbs.**Contractor:** David Landreth • 864-444-8214**Fall Line Farm - Dr. Les Sales**

Crawfordville, GA

40 miles southeast of Athens, GA

<b>BLK/BWF</b>	64 hd.	<b>#1</b>	90%	<b>FRAME:</b> Medium
<b>CH-X</b>	6 hd.	<b>#1<sup>1/2</sup></b>	10%	
<b>RED</b>		<b>#2</b>		<b>FLESH:</b> Medium
<b>RWF</b>				
<b>Other</b>				

*Heifers sell \$.06 back.***Delivery Date:** July 22 - 26**Shrink:** None**Notice to load:** 48 hours**Slide:** \$5/cwt topside only**Conditions:** Hauled 15 miles, weighed on the ground.**Nutrition:** 10# per hd per day of 16% grower feed with free choice mineral, pasture, and hay.**Vaccinations:** Bovi-Shield Gold FP5 L5 (3x), Once PMH (2x), Ultrabac 7 w/somnus (2x), Multimin (1x)**Implants:** None**Dewormer:** Longrange (1x)**Genetics:** Predominantly Angus genetics, sired by Angus bulls and out of mostly straight Angus cows. AI sires of calves are SS Niagara and GAR Prophet. Clean up bulls sired by GAR Surefire and SAV Mustang.**Other:** Weaned 65+ days. Bunk broke, very docile.**Home-Raised, All-Natural, Backgrounded, Weaned, Guaranteed Open, BQA Certified, GAP 4 Certified. global animal PARTNERSHIP**

An excellent, fancy load of home-raised, all-natural calves. They are very high percentage Angus genetics with many of the calves being AI sired. Heifers have been palpated and will be guaranteed open. Calves are very docile and come from a very good, reputational program. The GAP certificate can transfer with the cattle.

*Cattle that are picked up after the stated delivery dates will be subject to a 3# per day increase on the base weight and any weight stops for each day late after the last stated delivery date.*

**Lot 9128 STEERS & HEIFERS - 1 Load**

~38 Strs - Wt: 695 lbs. Wt Stop: 735 lbs. Variance: 250 lbs.  
 ~38 Hfrs - Wt: 640 lbs. Wt Stop: 680 lbs. Variance: 225 lbs.  
 Contractor: Marcus Harward • 704-322-0840

**Naked Creek Cattle Co - Andrew Rector**  
 Conover, NC • Loading in Turnersburg, NC  
 10 miles north of Statesville, NC

BLK/BWF	95%	#1	95%	FRAME: Medium
CH-X	2 hd.	#1 <sup>1/2</sup>	5%	
RED		#2		FLESH: Medium
RWF				
Other	2 hd.			

Price: \$ \_\_\_\_\_ Buyer # \_\_\_\_\_



Heifers sell \$.08 back.

**Delivery Date:** August 6 - 9 **Shrink:** None  
**Notice to load:** 48 hours **Slide:** \$7/cwt topside only  
**Conditions:** Hauled 25 miles, weighed on the ground.  
**Nutrition:** 8# per head per day of 14% grower pellet feed with fescue pasture, mineral, and hay.  
**Vaccinations:** Vista Once (1x), Vista 5 (1x), Inforce 3 (1x) Vision 7 (1x), Covexin 8 (1x) -w/somnus (1x)  
**Implants:** Revalor G **Dewormer:** Dectomax Inject (1x), Safeguard (1x)  
**Genetics:** Predominantly Angus genetics, sired by Angus & SimAngus bulls out of Angus-x-Continental cows. Sires are sons of SydGen Black Diamond and EF Cruise Control.  
**Other:** Weaned 90+ days. Bunk broke, very docile.



**Home-Raised, Backgrounded, Weaned, Heifers Guaranteed Open, BQA Certified.**

A very good split load of steers and heifers that will be about half steers and half heifers. They are out of high-performing genetics. They were born last fall and weaned May 1, turned out mainly on grass and hand fed each day. Calves will be hauled 25 miles to Harward Brothers L/S and weighed on the ground. An excellent group of 6-weight calves.

**Lot 9129 STEERS & HEIFERS - 1 Load**

35 Strs - Wt: 725 lbs. Wt Stop: 750 lbs. Variance: 150 lbs.  
 35 Hfrs - Wt: 660 lbs. Wt Stop: 685 lbs. Variance: 150 lbs.  
 Contractor: David Landreth • 864-444-8214

**Wes Knight**  
 Honea Path, SC  
 20 miles south of Greenville, SC

BLK/BWF	69 hd.	#1	95%	FRAME: Medium
CH-X	1 hd.	#1 <sup>1/2</sup>	5%	
RED		#2		FLESH: Medium
RWF				
Other				

Price: \$ \_\_\_\_\_ Buyer # \_\_\_\_\_



Heifers sell \$.06 back.

**Delivery Date:** July 22 - 26 **Shrink:** None  
**Notice to load:** 48 hours **Slide:** \$5/cwt topside only  
**Conditions:** Hauled 20 miles, weighed on the ground.  
**Nutrition:** 6# per head per day of 13% CPC Grower with free choice mineral, pasture, and hay.  
**Vaccinations:** Vista Once SQ (2x), Vision 7 (1x), Vision 8 (1x)  
**Implants:** None **Dewormer:** Eprinex (2x), Ivomec (1x)  
**Genetics:** Angus and SimAngus genetics. Sired by Angus and SimAngus bulls from Yon and Blackcrest.  
**Other:** Weaned 60+ days. Bunk broke, very docile.



**Home-Raised, All-Natural, Backgrounded, Weaned, Guaranteed Open, BQA Certified. Pending GAP Certification.**

A very good set of all-natural, home-raised, docile calves. They are sired by top-performing Angus bulls and are all black/bwf except for one black-nose char-x. Calves will be weaned 60+ days at loading. These calves qualify as all-natural and will be GAP Certified pending an upcoming audit. An excellent set of calves ready to go to feed.

Cattle that are picked up after the stated delivery dates will be subject to a 3# per day increase on the base weight and any weight stops for each day late after the last stated delivery date.



**Lot 9130 STEERS & HEIFERS - 1 Load**

Price: \$ \_\_\_\_\_ Buyer # \_\_\_\_\_

Steers - Wt: 740 lbs. Wt Stop: 770 lbs. Variance: 125 lbs.

Heifers - Wt: 670 lbs. Wt Stop: 700 lbs. Variance: 125 lbs.

Contractor: Marcus Harward • 704-322-0840

**Willow Springs Farm - Zach Swaim**

Mocksville, NC

25 miles northeast of Statesville, NC

BLK/BWF	97%	#1	95%	FRAME: Medium
CH-X	2 hd.	#1 <sup>1/2</sup>	5%	
RED		#2		FLESH: Medium
RWF				
Other				

*Heifers sell \$.06 back.*

Delivery Date: July 22 - 26

Shrink: 2%

Notice to load: 48 hours

Slide: \$5/cwt topside only

Conditions: Weighed on the truck on Certified Scales

Nutrition: 12# of soyhulls, wet corn gluten, and ground corn with mineral, pasture, and hay.

Vaccinations: Vista Once (1x), Triangle 10 (1x), Vision 7 w/ spur (2x)

Implants: None

Dewormer: Cydectin (2x)

Genetics: 70-85% Angus. Angus and Angus-x-Continental cows, sired by Angus or Balancer bulls.

Other: Weaned 60+ days. Bunk broke, droke to waters, broke to a hot wire fence. Docile.



AllNATURAL

PrimeVAC™  
BY MERCK ANIMAL HEALTH**Home-Raised, All-Natural, Backgrounded, Weaned, Guaranteed Open, BQA Certified, GAP Certified.**

A very good set of reputational steers and heifers that are all home-raised and qualify as all-natural. Cattle are out of Angus-based cows and sired by top-performing, high carcass quality bulls. A fancy set of home-raised, docile calves. GAP-4 certified through Pineland Farms, will also sign all-natural affidavits for the cattle.

**DVAuction**  
Broadcasting Real-Time Auctions

**INTERNET VIEWING & BIDDING**

To view the sale or bid online, visit [www.DVAuction.com](http://www.DVAuction.com). Find the "Mid-Atlantic Cattle Sales (Richfield, NC)" sale and click on "Details." From this page you can view the catalog, videos, or log in to watch the sale. If you have an account, log in and view the sale. If you do not, you must create an account under the "Create New Account" tab in the upper left hand corner of the screen. You will need to confirm this account through your e-mail.

**You DO NOT have to be approved just to watch the sale but you will still need to create an account with DVAuction.**

**To register for a buyer's number, call Brooke at 704-322-9770 prior to the sale to be approved to bid online.**

*Cattle that are picked up after the stated delivery dates will be subject to a 3# per day increase on the base weight and any weight stops for each day late after the last stated delivery date.*

# 2019 Schedule

*All regular sales will be the first Wednesday of the month starting at 9:30 am est. (8:30 am cst.) unless noted with an asterisk (\*).*

July 10\*  
August 7  
September 4  
October 2  
November 6  
December 4

The screenshot shows the website's header with a logo and navigation links: HOME, ABOUT, VIDEO SALES, FEEDER SALES, SPECIAL SALES, NEWS, CONTACT. Below the header is a 'View Catalog' section. It includes a sub-header 'View Catalog', a note 'Click on links below to view PDF catalog. Online "flip" version is also available.', and a list of months from January to December. A featured catalog thumbnail for 'FEBRUARY 6, 2019' is displayed, showing a landscape with a barn and the text 'A Family Owned & Operated Business' and 'www.MACSvideo.com'. The thumbnail also lists the start time (9:30 AM EST / 8:30 AM CST) and contact information. At the bottom of the thumbnail, it says 'Powered by ISSUU' and 'Publish for Free'.

Visit [www.MACSvideo.com](http://www.MACSvideo.com) for the online catalog for all sales





# **GRADED FEEDER CALF SALES**

*Cattle are grouped according to weight and grade. All calves have received at least one round of vaccinations including a modified live vaccine with pasteurella and a blackleg.*

**Stanly County Livestock Market • Norwood, NC**

**Sale time: 6:00 pm est.**

**Conference call available at sale time!**

**NEXT SALE:**

**Thursday, July 11**

**Weaned, BQA Feeder Calf Sale**

**ALL CALVES WEANED 45+ DAYS AND DOUBLE VACCINATED**

*(respiratory x2, MLV x1, blackleg x2)*

**EXPECTING 1,000+ HEAD**

**August 1 - Regular Feeder Sale (not weaned)**

**September 5 - BQA Weaned Sale**

**September 12 - Regular Feeder Sale (not weaned)**

**[www.macsvideo.com/feeder-sales](http://www.macsvideo.com/feeder-sales)**



28978 Misenheimer Rd • Richfield, NC 28137  
Office: 704-463-5828 • Marcus Harward: 704-322-0840

MACSvideoauction@gmail.com  
[www.MACSvideo.com](http://www.MACSvideo.com)