



*A Family Owned and Operated  
Livestock Video Auction*

---

**JANUARY 4, 2017**

*Regular Video Auction*

9:30 AM est. / 8:30 AM cst.

---

Marcus: (704) 322-0840 // Brooke: (704) 322-9770

Office: (704) 463-5828 // Fax: (704) 463-5861

**MACSvideoauction@gmail.com**

**www.MACSvideo.com**

*“But those who trust in the Lord will renew their strength.  
They will soar on wings like eagles; they will run and not grow  
weary, they will walk and not be faint.”*

**Isaiah 40:31**



## Call-In Information

Call #: 1-866-906-9888

Conference Code: 9461720 #

**\*\*NEW TIME!\*\*** The sale will begin at 9:30 am est. (8:30 cst.)

### Steps for Conference Call:

- 1 Call 704-322-0840 or 704-322-9770 prior to the sale to receive a buyer's number.
- 2 Call 1-866-906-9888 to enter the conference call.
- 3 Enter Code: 9461720, followed by the # sign. You may state your name or simply press the # sign again to enter the call.
- 4 Please minimize all background noise. To mute your phone press \*6. To un-mute, press \*6 again.
- 5 Simply hang up to leave the conference call.

*Thank you!*

This sale will be broadcast live on the internet.

**DVAuction**  
Broadcasting Real-Time Auctions

Call Brooke at 704-322-9770 to receive a buyer's number for online bidding. After you have received your number you may watch, listen, & bid online at [www.DVAuction.com!](http://www.DVAuction.com)

DVAuction provides a great opportunity for you to listen to the sale while also watching videos of the cattle in real-time. You do not have to have a number to watch the sale.

You may contact Brooke Harward at 704-322-9770 with any questions regarding watching the sale on DVAuction.

## **Video Information**

To view the sale catalog and videos online please visit [www.MACsvideo.com](http://www.MACsvideo.com)

Videos of sale cattle are also located at [www.youtube.com/MACsvideoauction](http://www.youtube.com/MACsvideoauction)



### Table of Contents - January 4, 2017

Call-In Numbers, DVAAuction Online, & Video Information	Page 2
Table of Contents	Page 3
Lot 1 1 Load Steers 685 lbs. Talley Farms, Inc.	Page 4
Lot 2 1 Load Steers 800 lbs. Rocking H Cattle Co. <i>**All-Natural**</i>	Page 4
Lot 3 1 Load Steers 825 lbs. Talley Farms, Inc. <i>**All-Natural**</i>	Page 5
Lot 4 1 Load Steers 825 lbs. Bowman Farms	Page 5
Lot 5 1 Load Steers 850 lbs. Rocking H Cattle Co. <i>**All-Natural**</i>	Page 6
Lot 6 2 Loads Steers 850 lbs. Donald Chriscoe Farm	Page 6
Lot 7 1 Load Steers 875 lbs. Oakwood Farms	Page 7
Lot 8 1 Load Heifers 675 lbs. Talley Farms, Inc.	Page 7
Lot 9 1 Load Heifers 685 lbs. Ridgcrest Farms <i>**All-Natural**</i>	Page 8
Lot 10 1 Load Heifers 710 lbs. Talley Farms, Inc. <i>**All-Natural**</i>	Page 8
Lot 11 2 Loads Heifers 750 lbs. Donald Chriscoe Farm	Page 9
Lot 12 1 Load Heifers 750 lbs. Hill Creek Farms <i>**All-Natural**</i>	Page 9
Lot 13 1 Load Heifers 785 lbs. Talley Farms, Inc. <i>**All-Natural**</i>	Page 10
Lot 14 1 Load Heifers 785 lbs. Rocking H Cattle Co. <i>**All-Natural**</i>	Page 10
Lot 15 1 S. Load Steers 675 lbs. Hidden Valley Farm <i>**All-Natural**</i>	Page 11
Heifers 650 lbs.	
Lot 16 1 S. Load Steers 750 lbs. Teague & Hunsucker Farms <i>**All-Natural**</i>	Page 11
Heifers 700 lbs.	
Lot 17 1 S. Load Steers 775 lbs. Craig Smith & Michael Fields	Page 12
Heifers 750 lbs.	
Lot 18 1 S. Load Steers 825 lbs. Gaither Grain & Cattle, LLC <i>**All-Natural**</i>	Page 12
Heifers 725 lbs.	

*Most loads have weight stops at 25-50 lbs. over base weight.*

*The individual weight stops are posted on each lot. →*



*Cattle that are picked up after the stated delivery dates will be subject to a 3# per day increase on the base weight and any weight stops for each day late after the last stated delivery date.*

### **NEXT SALES:**

**February 8\*      March 8\***

*\*\*These sales will be the second Wednesday of the month\*\**

# Mid-Atlantic Cattle Sales - January 4, 2017

LOT 1 STEERS 1 LOAD Price: \$ \_\_\_\_\_ Buyer # \_\_\_\_\_

Avg. Wt: 685 lbs. Variance: 150 lbs.

Contractor: Bruce Shankle

Talley Farms, Inc.  
Speedwell, VA  
14 miles south of Wytheville, VA



Blk/BWF	100%	Frame	
Ch-X	-	Medium	100%
Red	-	Large	-
#1	90%	Flesh	
#1 <sup>1/2</sup>	10%	Medium	100%

Delivery Date: January 9 - 18 Shrink: 2% Slide: \$8/CWT topside only

Conditions: Cattle will be weighed on the ground on certified scales.

Nutrition: TMR of corn silage and hay with free choice minerals and hay.

Vaccinations: Bovi-Shield Gold 5 (1x), Bovi-Shield Gold One Shot (1x), Vision 7 (2x)

Implants: Ralgro Dewormer: Ivermec

COMMENTS Home-Raised, Backgrounded, Weaned, BQA Certified.



A very nice set of home-raised steers. Steers are all Angus-sired, out of the Talley Farms cow herd and will be all black or BWF. They have been weaned for over 60 days. There may be a couple with a blue eye. Just a fancy set of steers ready to go to feed.

LOT 2 STEERS 1 LOAD (62 HEAD) Price: \$ \_\_\_\_\_ Buyer # \_\_\_\_\_

Avg. Wt: 800 lbs. Variance: 150 lbs.

Contractor: Marcus Harward

Rocking H Cattle Company  
Turnersburg, NC  
10 miles northeast of Statesville, NC



Blk/BWF	100%	Frame	
Ch-X	-	Medium	100%
Red	-	Large	-
#1	95%	Flesh	
#1 <sup>1/2</sup>	5%	Medium	100%

Delivery Date: January 16 - 20 Shrink: 2% Slide: \$8/CWT topside only

Conditions: Goosenecked into HBLM barn and weighed on the ground on certified scales.

Nutrition: 13% TMR with grass, free choice mineral, and hay.

Vaccinations: Vista Once (1x), Vista 5 (1x), Vision 7 w/ spur (2x)

Implants: None Dewormer: Longrange, Safeguard

COMMENTS Home-Raised, All-Natural, Backgrounded, Weaned, BQA Certified



A very good set of home-raised, all-natural steers. They are all Angus-based, sired by Angus bulls, mainly from EBS Farms genetics, and out of Angus-continental cross cows. They have been weaned for 75+ days and double vaccinated. They are bunk broke. A fancy set of northern type Angus steers ready to go to feed.

# Mid-Atlantic Cattle Sales - January 4, 2017

**LOT 3 STEERS 1 LOAD** Price: \$ \_\_\_\_\_ Buyer # \_\_\_\_\_  
**Avg. Wt:** 825 lbs. **Variance:** 150 lbs.  
**Contractor:** Bruce Shankle


**All NATURAL**

**Talley Farms, Inc.**  
 Stanfield, NC  
 20 miles east of I-485 in Charlotte, NC



<b>Blk/BWF</b>	100%	<b>Frame</b>	
<b>Ch-X</b>	-	<b>Medium</b>	100%
<b>Red</b>	-	<b>Large</b>	-
<b>#1</b>	100%	<b>Flesh</b>	
<b>#1<sup>1/2</sup></b>	-	<b>Medium</b>	100%

**Delivery Date:** January 9 - 18 **Shrink:** 2% **Slide:** \$8/CWT topside only  
**Conditions:** Cattle will be weighed on the truck at the feed mill on Certified Scales.  
**Nutrition:** TMR of corn silage, wheat straw, soyhulls, and wheat screenings with free choice minerals and hay.  
**Vaccinations:** Bovi-Shield Gold 5 (1x), Bovi-Shield Gold One Shot (1x), Vision 7 (2x)  
**Implants:** None **Dewormer:** Ivermec

**COMMENTS** *Home-Raised, All-Natural, Backgrounded, Weaned, BQA Certified.*  
 A very nice set of home-raised, all-natural steers from the Talleys. There are 70 steers to make a load out of and they are all black or BWF. The steers are all natural and are sired by top-quality Angus bulls. They are bunk broke and have been weaned 60+ days. A fancy set of steers ready to go to feed that have been double vaccinated and backgrounded at the farm.

**LOT 4 STEERS 1 LOAD** Price: \$ \_\_\_\_\_ Buyer # \_\_\_\_\_  
**Avg. Wt:** 825 lbs. **Variance:** 150 lbs.  
**Contractor:** Marcus Harward


**YON**  
 FAMILY FARMS

**Bowman Farms**  
 Iva, SC  
 45 miles southwest of Greenville, SC



<b>Blk/BWF</b>	78%	<b>Frame</b>	
<b>Ch-X</b>	15%	<b>Medium</b>	100%
<b>Red</b>	7%	<b>Large</b>	-
<b>#1</b>	100%	<b>Flesh</b>	
<b>#1<sup>1/2</sup></b>	-	<b>Medium</b>	100%

**Delivery Date:** January 5 - 13 **Shrink:** 2% **Slide:** \$8/CWT topside only  
**Conditions:** Cattle will be hauled 15 miles and weighed on the truck on Certified Scales.  
**Nutrition:** 13% TMR (8-10#) with free choice minerals, pasture, and hay.  
**Vaccinations:** Vira Shield 6VL5 HB (1x), Vista once (1x), Cavalry 9 (1x)  
**Implants:** Ralgro **Dewormer:** Safeguard (2x)

**COMMENTS** *Home-Raised, Backgrounded, Weaned, BQA Certified.*  
 A fancy set of home-raised, northern-type steers. They are all Angus-based, sired by registered Angus bulls (Yon, Bricton, & Clemson genetics) or Charolais bulls (only bred to 75% black Angus cows). The reds are sired by Red Angus bulls. They are double vaccinated and have been weaned at least 90-120 days. They are bunk broke and broke to waterers. An excellent load of reputational cattle ready to go as soon as possible.

*Cattle that are picked up after the stated delivery dates will be subject to a 3# per day increase on the base weight and any weight stops for each day late after the last stated delivery date.* Page -5-

# Mid-Atlantic Cattle Sales - January 4, 2017

LOT 5 STEERS 1 LOAD (58 HEAD) Price: \$ \_\_\_\_\_ Buyer # \_\_\_\_\_

Avg. Wt: 850 lbs. Variance: 150 lbs.

Contractor: Marcus Harward



**Rocking H Cattle Company**  
Turnersburg, NC  
10 miles northeast of Statesville, NC



<b>Blk/BWF</b>	100%	<b>Frame</b>	
<b>Ch-X</b>	-	<b>Medium</b>	100%
<b>Red</b>	-	<b>Large</b>	-
<b>#1</b>	95%	<b>Flesh</b>	
<b>#1<sup>1/2</sup></b>	5%	<b>Medium</b>	100%

**Delivery Date:** ASAP, January 5 - 13 **Shrink:** 2% **Slide:** \$8/CWT topside only

**Conditions:** Goosenecked into HBLM barn and weighed on the ground on certified scales.

**Nutrition:** 13% TMR with grass, free choice mineral, and hay.

**Vaccinations:** Vista Once (1x), Vista 5 (1x), Vision 7 w/ spur (2x)

**Implants:** None

**Dewormer:** Longrange, Safeguard

**COMMENTS** Home-Raised, All-Natural, Backgrounded, Weaned, BQA Certified



Another good set of home-raised, all-natural steers. They are all Angus-based, sired by Angus bulls, mainly from EBS Farms genetics, and out of Angus-continental cross cows. They have been weaned for 75+ days and double vaccinated. They are bunk broke. A fancy set of northern type Angus steers ready to go to feed as soon as possible.

LOT 6 STEERS 2 LOADS Price: \$ \_\_\_\_\_ Buyer # \_\_\_\_\_

Avg. Wt: 850 lbs. Variance: 125 lbs.

Contractor: Marcus Harward

**Donald Chriscoe Farm**  
Seagrove, NC  
40 miles south of Greensboro, NC



<b>Blk/BWF</b>	100%	<b>Frame</b>	
<b>Ch-X</b>	-	<b>Medium</b>	100%
<b>Red</b>	-	<b>Large</b>	-
<b>#1</b>	95%	<b>Flesh</b>	
<b>#1<sup>1/2</sup></b>	5%	<b>Medium</b>	100%

**Delivery Date:** ASAP, January 5 - 13 **Shrink:** 2% **Slide:** \$8/CWT topside only

**Conditions:** Cattle will be weighed on the ground on Certified Scales.

**Nutrition:** Corn-silage and soyhull based TMR with access to mineral, grass, and hay.

**Vaccinations:** Bovi-Shield Gold 5 (2x), Vision 7 20/20 (1x), Nuplura (1x), Ocuguard Pinkeye

**Implants:** None

**Dewormer:** Ivomec Inject (2x)

**COMMENTS** Backgrounded, Weaned, BQA Certified.



A fancy 2 loads of northern-type steers with 116 head for the load. We will have a very accurate weight on the steers on sale day. Steers are under a very good vaccination program and have all been weaned well over 60 days. They are Angus-based, sired by mainly Angus bulls. Steers are bunk broke and broke to Ritchie waters. An excellent set of medium flesh, growthy type steers ready to go to feed.

Page -6- Cattle that are picked up after the stated delivery dates will be subject to a 3# per day increase on the base weight and any weight stops for each day late after the last stated delivery date.

# Mid-Atlantic Cattle Sales - January 4, 2017


**LOT 7 STEERS 1 LOAD (56 HEAD)** Price: \$ \_\_\_\_\_ Buyer # \_\_\_\_\_  
**Avg. Wt:** 875 lbs. **Variance:** 100 lbs.  
**Contractor:** Marcus Harward

**Oakwood Farms - Thomas Lawrence**  
 Seagrove, NC  
 40 miles south of Greensboro, NC



<b>Blk/BWF</b>	100%	<b>Frame</b>	
<b>Ch-X</b>	-	<b>Medium</b>	100%
<b>Red</b>	-	<b>Large</b>	-
<b>#1</b>	100%	<b>Flesh</b>	
<b>#1<sup>1/2</sup></b>	-	<b>Medium</b>	100%

**Delivery Date:** ASAP, January 6 - 13 **Shrink:** 2% **Slide:** \$8/CWT topside only  
**Conditions:** Cattle will be weighed on the ground on Certified Scales. Need a 48 hour notice to load.  
**Nutrition:** TMR of silage with 3 lbs corn and 1.5 lbs soy beam mill.  
**Vaccinations:** Bovi-Shield Gold 5 (1x), Inforce 3 (1x), Vision 7 (2x)  
**Implants:** None **Dewormer:** Longrange

**COMMENTS** *Backgrounded, Weaned, BQA Certified.*  
 An outstanding set of all black/BWF steers. Steers are Angus-based, all sired by Angus-bulls and many being straight Angus. Steers are bunk broke to broke to waters. This is the first cut of about 270 head. They are a big set of growthy steers being fed in a barn with access to outside pens. There will be a 100 lb. or less variance. A very good set of northern-type steers.


**LOT 8 HEIFERS 1 LOAD** Price: \$ \_\_\_\_\_ Buyer # \_\_\_\_\_  
**Avg. Wt:** 675 lbs. **Variance:** 150 lbs.  
**Contractor:** Bruce Shankle

**Talley Farms, Inc.**  
 Speedwell, VA  
 14 miles south of Wytheville, VA



<b>Blk/BWF</b>	100%	<b>Frame</b>	
<b>Ch-X</b>	-	<b>Medium</b>	100%
<b>Red</b>	-	<b>Large</b>	-
<b>#1</b>	90%	<b>Flesh</b>	
<b>#1<sup>1/2</sup></b>	10%	<b>Medium</b>	100%

**Delivery Date:** January 9 - 18 **Shrink:** 2% **Slide:** \$8/CWT topside only  
**Conditions:** Cattle will be weighed on the ground on certified scales.  
**Nutrition:** TMR of corn silage and hay with free choice minerals and hay.  
**Vaccinations:** Bovi-Shield Gold 5 (1x), Bovi-Shield Gold One Shot (1x), Vision 7 (2x)  
**Implants:** None **Dewormer:** Ivermec

**COMMENTS** *Home-Raised, Backgrounded, Weaned, BQA Certified.*  
 A very nice set of home-raised heifers. They are all Angus-sired, out of the Talley Farms cow herd and will be all black or BWF. They have been weaned for over 60 days. There may be a couple with a blue eye. They are the heifer-mates to Lot 1. Need to load Lot 1 steers out first. Just a fancy set of heifers ready to go.

# Mid-Atlantic Cattle Sales - January 4, 2017

**LOT 9 HEIFERS 1 LOAD**  
**Avg. Wt:** 685 lbs. **Variance:** 125 lbs.  
**Contractor:** Mark Bray

Price: \$ \_\_\_\_\_ Buyer # \_\_\_\_\_



**Ridgecrest Farms**  
 Lawsonville, NC  
 35 miles north of Winston-Salem, NC



<b>Blk/BWF</b>	100%	<b>Frame</b>	
<b>Ch-X</b>	-	<b>Medium</b>	100%
<b>Red</b>	-	<b>Large</b>	-
<b>#1</b>	95%	<b>Flesh</b>	
<b>#1<sup>1/2</sup></b>	5%	<b>Medium</b>	100%

**Delivery Date:** January 5 - 13 **Shrink:** 2% **Slide:** \$8/CWT topside only  
**Conditions:** Cattle will be weighed on the farm on Certified Scales.  
**Nutrition:** Corn silage, wet corn gluten, and soyhulls with pasture, hay, and minerals.  
**Vaccinations:** Bovi-Shield Gold 5 (2x), Ultrabac 7 (1x)  
**Implants:** None **Dewormer:** Ivermectin Pour-On, Safeguard

**COMMENTS** *Home-Raised, All-Natural, Backgrounded, Weaned, Guaranteed Open, BQA Certified*  
 A very nice load of home-raised, all-natural heifers. There are 80 heifers to pick a load out of, all black or BWF. They will be sleeved by a vet from Rocky Creek Vets and guaranteed open. They are bunk broke and broke to waters. This is the top cut of this group of cattle. A very good load of all-natural heifers ready to go to feed.



**LOT 10 HEIFERS 1 LOAD**  
**Avg. Wt:** 710 lbs. **Variance:** 100 lbs.  
**Contractor:** Bruce Shankle

Price: \$ \_\_\_\_\_ Buyer # \_\_\_\_\_



**Talley Farms, Inc.**  
 Stanfield, NC  
 20 miles east of I-485 in Charlotte, NC



<b>Blk/BWF</b>	100%	<b>Frame</b>	
<b>Ch-X</b>	-	<b>Medium</b>	100%
<b>Red</b>	-	<b>Large</b>	-
<b>#1</b>	100%	<b>Flesh</b>	
<b>#1<sup>1/2</sup></b>	-	<b>Medium</b>	100%

**Delivery Date:** January 9 - 18 **Shrink:** 2% **Slide:** \$8/CWT topside only  
**Conditions:** Cattle will be weighed on the truck at the feed mill on Certified Scales.  
**Nutrition:** TMR of corn silage, wheat straw, soyhulls, and wheat screenings with free choice minerals and hay.  
**Vaccinations:** Bovi-Shield Gold 5 (1x), Bovi-Shield Gold One Shot (1x), Vision 7 (2x)  
**Implants:** None **Dewormer:** Ivermec

**COMMENTS** *Home-Raised, All-Natural, Backgrounded, Weaned, BQA Certified.*  
 A very nice set of home-raised, all-natural heifers from the Talleys. There are 76 head to make a load out of and they are all black or BWF. They are all natural and are sired by top-quality Angus bulls. They are bunk broke and have been weaned 60+ days. A fancy set of heifers that would make a good set of replacement females or feeding heifers.



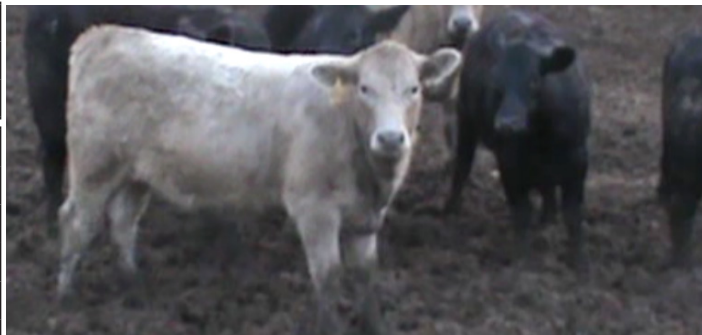
*Cattle that are picked up after the stated delivery dates will be subject to a 3# per day increase on the base weight and any weight stops for each day late after the last stated delivery date.*



# Mid-Atlantic Cattle Sales - January 4, 2017


**LOT 11 HEIFERS 2 LOADS** Price: \$ \_\_\_\_\_ Buyer # \_\_\_\_\_  
**Avg. Wt:** 750 lbs. **Variance:** 125 lbs.  
**Contractor:** Marcus Harward

**Donald Chriscoe Farm**  
 Seagrove, NC  
 40 miles south of Greensboro, NC



<b>Blk/BWF</b>	110 hd.	<b>Frame</b>	
<b>Ch-X</b>	16 hs.	<b>Medium</b>	100%
<b>Red</b>	4 hd.	<b>Large</b>	-
<b>#1</b>	95%	<b>Flesh</b>	
<b>#1<sup>1/2</sup></b>	5%	<b>Medium</b>	100%

**Delivery Date:** ASAP, January 5 - 13 **Shrink:** 2% **Slide:** \$8/CWT topside only  
**Conditions:** Cattle will be weighed on the ground on Certified Scales.  
**Nutrition:** Corn-silage and soyhull based TMR with access to mineral, grass, and hay.  
**Vaccinations:** Bovi-Shield Gold 5 (2x), Vision 7 20/20 (1x), Nuplura (1x), Ocuguard Pinkeye  
**Implants:** None **Dewormer:** Ivomec Inject (2x)

**COMMENTS** *Backgrounded, Weaned, Guaranteed Open, BQA Certified.*  
 Another fancy set of backgrounded heifers. There are 200 head to sort 2 loads out of. Donald will have a very accurate weight on the heifers on sale day. They are under a very good vaccination program and have all been double vaccinated. They are Angus-based, sired by mainly Angus bulls. Heifers are bunk broke and broke to Ritchie waters. An excellent set of reputational heifers ready to go to feed.


**LOT 12 HEIFERS 1 LOAD** Price: \$ \_\_\_\_\_ Buyer # \_\_\_\_\_  
**Avg. Wt:** 750 lbs. **Variance:** 150 lbs.  
**Contractor:** Bruce Shankle

**Hill Creek Farms**  
 Hartsville, SC  
 20 miles NW of Florence, SC off US Hwy 15



<b>Blk/BWF</b>	85%	<b>Frame</b>	
<b>Ch-X</b>	10%	<b>Medium</b>	100%
<b>Red</b>	5%	<b>Large</b>	-
<b>#1</b>	95%	<b>Flesh</b>	
<b>#1<sup>1/2</sup></b>	5%	<b>Medium</b>	100%

**Delivery Date:** January 9 - 18 **Shrink:** 2% **Slide:** \$8/CWT topside only  
**Conditions:** Cattle will be hauled 4 miles and weighed on the truck on Certified Scales.  
**Nutrition:** Performance 14% commodity feed about 8-10 lbs. per day. Free choice mineral, pasture, and hay.  
**Vaccinations:** Bovi-Shield Gold (1x), Bovi-Shield One Shot (1x), Ultrabac 7 w/ somnus (2x)  
**Implants:** None **Dewormer:** Safeguard (2x), Cydectin (1x)

**COMMENTS** *Home-Raised, All-Natural, Backgrounded, Weaned, Guaranteed Open, BQA Certified.*  
 A very good set of all-natural heifers. They are all home-raised out of Angus based cows and Angus bulls and have been weaned for 60+ days. They are under an excellent vaccination program with complete records. They are broke to waterers and a hot wire fence. A fancy set of reputation type heifers ready to go to feed.

# Mid-Atlantic Cattle Sales - January 4, 2017

LOT 13 HEIFERS 1 LOAD Price: \$ \_\_\_\_\_ Buyer # \_\_\_\_\_

Avg. Wt: 785 lbs. Variance: 100 lbs.

Contractor: Bruce Shankle


**All NATURAL**

**Talley Farms, Inc.**  
Stanfield, NC  
20 miles east of I-485 in Charlotte, NC



<b>Blk/BWF</b>	100%	<b>Frame</b>	
<b>Ch-X</b>	-	<b>Medium</b>	100%
<b>Red</b>	-	<b>Large</b>	-
<b>#1</b>	100%	<b>Flesh</b>	
<b>#1<sup>1/2</sup></b>	-	<b>Medium</b>	100%

**Delivery Date:** January 9 - 18      **Shrink:** 2%      **Slide:** \$8/CWT topside only  
**Conditions:** Cattle will be weighed on the truck at the feed mill on Certified Scales.  
**Nutrition:** TMR of corn silage, wheat straw, soyhulls, and wheat screenings with free choice minerals and hay.  
**Vaccinations:** Bovi-Shield Gold 5 (1x), Bovi-Shield Gold One Shot (1x), Vision 7 (2x)  
**Implants:** None      **Dewormer:** Ivermec

**COMMENTS** *Home-Raised, All-Natural, Backgrounded, Weaned, BQA Certified.*  
 Another very good set of home-raised, all-natural heifers from the Talleys. There are 64 head to make a load out of and they are all black or BWF. They are all natural and are sired by top-quality Angus bulls. They are bunk broke and have been weaned 60+ days. A fancy set of heifers that would make a good set of replacement females or feeding heifers.

LOT 14 HEIFERS 1 LOAD (63 HEAD) Price: \$ \_\_\_\_\_ Buyer # \_\_\_\_\_

Avg. Wt: 785 lbs. Variance: 150 lbs.

Contractor: Marcus Harward


**All NATURAL** **PrimeVAC**  
BY MERCK ANIMAL HEALTH

**Rocking H Cattle Company**  
Turnersburg, NC  
10 miles northeast of Statesville, NC



<b>Blk/BWF</b>	100%	<b>Frame</b>	
<b>Ch-X</b>	-	<b>Medium</b>	100%
<b>Red</b>	-	<b>Large</b>	-
<b>#1</b>	95%	<b>Flesh</b>	
<b>#1<sup>1/2</sup></b>	5%	<b>Medium</b>	100%

**Delivery Date:** January 9 - 20      **Shrink:** 2%      **Slide:** \$8/CWT topside only  
**Conditions:** Goosenecked into HBLM barn and weighed on the ground on certified scales.  
**Nutrition:** 13% TMR with grass, free choice mineral, and hay.  
**Vaccinations:** Vista Once (1x), Vista 5 (1x), Vision 7 w/ spur (2x)  
**Implants:** None      **Dewormer:** Longrange, Safeguard

**COMMENTS** *Home-Raised, All-Natural, Backgrounded, Weaned, Guaranteed Open, BQA Certified*  
 A very good set of home-raised, all-natural heifers. They are all Angus-based, sired by Angus bulls, mainly from EBS Farms genetics, and out of Angus-continental cross cows. They have been weaned for 75+ days and double vaccinated. They are bunk broke. They are guaranteed open, sleeved by Rocky Creek Dairy vet. A fancy set of northern type heifers ready to go to feed.

# Mid-Atlantic Cattle Sales - January 4, 2017

**LOT 15 STRS/HFRS 1 SPLIT LOAD**

Price: \$ \_\_\_\_\_ Buyer # \_\_\_\_\_

**Avg. Wt:** 30 Strs: 675 lbs. **Variance:** 125 lbs.  
32 Hfrs: 650 lbs. **Variance:** 125 lbs.

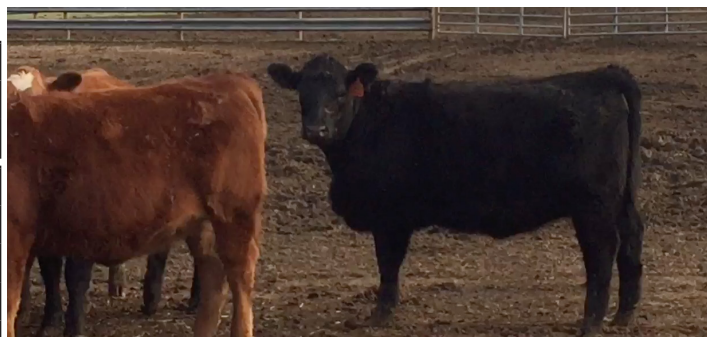
**All NATURAL**

**Contractor:** David McDannald

**Hidden Valley Farm - Brian LeDaire**  
Abbeville, SC  
40 miles south of Greenville, SC

**705**  
WEIGHT  
STOP

**680**  
WEIGHT  
STOP



<b>Blk/BWF</b>	90%	<b>Frame</b>	
<b>Char-X</b>	-	<b>Medium</b>	100%
<b>Red</b>	10%	<b>Large</b>	-
<b>#1</b>	100%	<b>Flesh</b>	
<b>#1<sup>1/2</sup></b>	-	<b>Medium</b>	100%

**Delivery Date:** ASAP, January 5 - 13. **Heifers sell \$0.08 back. Shrink:** 2% **Slide:** \$8/CWT topside only

**Conditions:** Cattle will be hauled 10 miles and weighed on the truck.

**Nutrition:** Wet DG, Gin trash, and balage TMR (20#/day) with mineral and hay.

**Vaccinations:** Inforce 3 (1x), Vista Once (1x), Vista 5 VL5 (2x), Vision 7 somn. w/ spur (2x), Cavalry 9w/ tet. (1x)

**Implants:** None

**Dewormer:** Ivomec Inject. (2x)

**COMMENTS** *Home-Raised, All-Natural, Backgrounded, Weaned, Heifers Guaranteed Open, BQA Certified.*



An excellent set of home-raised, feeder calves that are all-natural and have been backgrounded. Calves are under an excellent vaccination program and will be weaned 45+ days. Calves are sired by high-performing Simmental and SimAngus bulls and out of Angus cows. **This will be a light load at 42,000 lbs.** The are carrying a medium+ flesh. HVF is Gap Certified 3 through Pineland Farms.

**LOT 16 STRS/HFRS 1 SPLIT LOAD**

Price: \$ \_\_\_\_\_ Buyer # \_\_\_\_\_

**Avg. Wt:** 37 Strs: 750 lbs. **Variance:** 300 lbs.  
27 Hfrs: 700 lbs. **Variance:** 250 lbs.

**All NATURAL PrimeVAC<sup>™</sup>**  
BY MERCK ANIMAL HEALTH

**Contractor:** Marcus Harward

**Teague Cattle Farm & Hunsucker Farms**  
Catawba, NC  
15 miles west of Statesville, NC

**790**  
WEIGHT  
STOP

**740**  
WEIGHT  
STOP



<b>Blk/BWF</b>	100%	<b>Frame</b>	
<b>Char-X</b>	-	<b>Medium</b>	100%
<b>Red</b>	-	<b>Large</b>	-
<b>#1</b>	95%	<b>Flesh</b>	
<b>#1<sup>1/2</sup></b>	5%	<b>Medium</b>	100%

**Delivery Date:** January 16 - 27. **Heifers sell \$0.08 back. Shrink:** None **Slide:** \$8/CWT topside only

**Conditions:** Cattle will be hauled 25 miles and weighed on the ground at the Catawba Cattle Alliance Barn.

**Nutrition:** 14% TMR with access to free choice minerals and hay.

**Vaccinations:** Vista Once (1x), Vista 5 (1x), Vira Shield 6 w/ somnus (1x), Vision 7 (2x)

**Implants:** None

**Dewormer:** Cydectin, Valbazen

**COMMENTS** *Home-Raised, All-Natural, Backgrounded, Weaned, Heifers Guaranteed Open, BQA Certified.*



A fancy set of home-raised, all-natural calves. The calves are sired by high-performance Angus & SimAngus bulls from Yon Family Farms and Bull Power (GA). Calves are 50-75% Angus with either a little Simmental or Gelbvieh. The two farms have been running their cattle operation together. They have been double vaccinated. A good load of all-natural steers and heifers.

*Cattle that are picked up after the stated delivery dates will be subject to a 3# per day increase on the base weight and any weight stops for each day late after the last stated delivery date.* Page -11-

# Mid-Atlantic Cattle Sales - January 4, 2017

LOT 17 STRS/HFRS 1 SPLIT LOAD Price: \$ \_\_\_\_\_ Buyer # \_\_\_\_\_

Avg. Wt: 32 Strs: 775 lbs. Variance: 150 lbs.  
32 Hfrs: 750 lbs. Variance: 150 lbs.



Contractor: Marcus Harward

Craig Smith & Michael Fields  
Pleasant Garden, NC  
10 miles south of Greensboro, NC

810  
WEIGHT  
STOP

785  
WEIGHT  
STOP

Blk/BWF	100%	Frame	
Char-X	-	Medium	100%
Red	-	Large	-
#1	95%	Flesh	
#1 <sup>1/2</sup>	5%	Medium	100%



Delivery Date: January 5 - 9 or 13. Heifers sell \$0.08 back. Shrink: None Slide: \$8/CWT topside only

Conditions: Cattle will be hauled 20 miles and weighed on the ground at the Alamance Cattlemen's Barn.

Nutrition: 14% TMR (8-10#) with access to free choice minerals, pasture, and hay.

Vaccinations: Bovi-Shield Gold 5 (2x), Bovi-Shield Gold One Shot (1x), Ultra bac 8 (1x)

Implants: None

Dewormer: Ivermecton (1x), Dectomax (1x)

COMMENTS Home-Raised, Backgrounded, Weaned, Heifers Guaranteed Open, BQA Certified.



A fancy set of home-raised steers and heifers. The calves are sired by high-performance Angus & SimAngus bulls, predominantly from EBS Farms genetics. Calves are at least 50-75% Angus. The two farms have been running their cattle under the same programs. They have been double vaccinated and are bunk broke. A good load of backgrounded steers and heifers.

LOT 18 STRS/HFRS 1 SPLIT LOAD (52) Price: \$ \_\_\_\_\_ Buyer # \_\_\_\_\_

Avg. Wt: Strs: 825 lbs. Variance: 150 lbs.  
Hfrs: 725 lbs. Variance: 150 lbs.



Contractor: Marcus Harward

Gaither Grain & Cattle, LLC  
Harmony, NC  
10 miles north of Statesville, NC

850  
WEIGHT  
STOP

750  
WEIGHT  
STOP

Blk/BWF	98%	Frame	
Char-X	-	Medium	100%
Red	1 steer	Large	-
#1	100%	Flesh	
#1 <sup>1/2</sup>	-	Medium	100%



Delivery Date: January 6 - 13. Heifers sell \$0.08 back. Shrink: None Slide: \$8/CWT topside only

Conditions: Cattle will be hauled to Harward L/S Market and weighed on Certified Ground Scales.

Nutrition: Cattle are fed a 12% ration and haylage with minerals, pasture, and hay.

Vaccinations: 1st Round: Triangle 10, Vision 7 2nd Round: Vista Once w/ past., Vision 7

Implants: None

Dewormer: Cydectin (2x)

COMMENTS Home-Raised, Backgrounded, Weaned, Heifers Guaranteed Open, BQA Certified.



A very nice set of home-raised, all-natural calves. Calves are predominantly Angus cattle, sired by Angus bulls, mainly from Uwharrie Ridge Farms. They have been weaned for over 90 days and backgrounded at the farm. They are under a good vaccination and management program. There are 52 head for the load. An excellent load at about 42,000 lbs ready to go to feed.

Cattle that are picked up after the stated delivery dates will be subject to a 3# per day increase on the base weight and any weight stops for each day late after the last stated delivery date.