



**MID-ATLANTIC**  
CATTLE SALES

*A Family Owned and Operated  
Livestock Video Auction*

**[WWW.MACSVIDEO.COM](http://WWW.MACSVIDEO.COM)**

---

***SELLING 36 LOTS!***

**AUGUST 7, 2019**

Start Time: 9:30 AM edt. / 8:30 AM cdt.

Marcus Harward: 704-322-0840

Office: 704-463-5828

# Video Sale INFORMATION

Video sales are a marketing mechanism that have grown in popularity due to the opportunities they present to producers who deal in large numbers of stocker and feeder cattle. Cattle are generally marketed in trailer-load lots weighing approximately 48,500 pounds; however, we can also sell "partial loads" if there are not enough cattle to make a full trailer-load. Before the sale, a representative from MACS goes to the farm to record video of the cattle while also documenting important information about the cattle including breed, frame, muscling, and fleshing as well as health and nutrition programs. *The following catalog provides this information from our consignors and contractors to assist with marketing the consigned cattle. If you have any questions regarding the stated information, please contact a MACS representative listed throughout this catalog.*

## SALE DATE & TIME:

**August 7, 2019 - Wednesday**

**9:30 am edt. | 8:30 am cdt.**

## CONTACT:

Office .....704-463-5828

Marcus Harward .....704-322-0840

Bruce Shankle .....704-694-8686

Brooke Harward .....704-322-9770

macsvideoauction@gmail.com

## WEBSITES:

[www.MACSVideo.com](http://www.MACSVideo.com)

View catalog, videos, and additional updates online on our website.

[www.macsvideo.com/view-video](http://www.macsvideo.com/view-video)

All videos of sale cattle are posted directly on our video page listed above.

## ANNOUNCEMENTS:

Announcements made on sale day will take precedence over what is stated in the catalog.

## TERMS & CONDITIONS:

- Most loads have weight stops at 25-50 lbs. over the base weight. The individual weight stops are posted on each lot.
- Cattle that are picked up after the stated delivery dates will be subject to a 3# per day increase on the base weight and any weight stops for each day late after the last stated delivery date.
- Payment by Buyer is due to Mid-Atlantic Cattle Sales at such times as the value of the cattle is determined based on weight (subject to condition), price (subject to condition), and any other conditions stated at time of sale. All payment due will be in accordance with USDA P & S prompt pay policy.



Family owned and operated since 2010

## Bidding Options

We want to offer you the best opportunities we can to participate in our sales each month. Below are three options for bidding on the sale.

### 1. Conference Call

The most common resource used is our conference call line. Contact Marcus or Brooke prior to the sale to receive a buyer's number. After 9:15 est. on sale day, you can call the auction number to listen and bid on the sale. *Please keep background noise to a minimum as we will have multiple people on the line.*

**CALL-IN NUMBER: 1-866-906-9888**

**PASSCODE: 9461720 #**

When asked for your name, you may state your name OR simply press the # sign to enter the call.

**To mute your phone, press \*6. To un-mute, press \*6 again.**



### 2. Internet Viewing & Bidding

To view the sale or bid online, visit [www.DVAuction.com](http://www.DVAuction.com). Find the "Mid-Atlantic Cattle Sales (Richfield, NC)" sale and click on "Details." From this page you can view the catalog, videos, or log in to watch the sale. If you have an account, log in and view the sale. If you do not, you must create an account under the "Create New Account" tab in the upper left hand corner of the screen. You will need to confirm this account through your e-mail. It is best to do this at least a day before the sale.

**You DO NOT have to be approved just to watch the sale but you will still need to create an account with DVAuction.**

**To register for a buyer's number, call Brooke at 704-322-9770 prior to the sale to be approved to bid online.**

### 3. Absentee Bidding

For people who can not view the sale at sale time, we have independent contractors who can assist you with absentee bidding. Contact Marcus at 704-322-0840 for more information.

*"For God so loved the world that he gave his one and only Son, that whoever believes in him shall not perish but have eternal life."*

**John 3:16 (NIV)**

# TABLE OF CONTENTS

## AUGUST 7, 2019

Video Sale Information	Page 2
Table of Contents	Page 3-4
Upcoming Auction Schedule	Page 5

### Central Carolina Alliance Information - Page 6

Lot 9131	1 Load	Steers	845 lbs.	Central Carolina Alliance <b>**All-Natural**</b>	Page 7
Lot 9132	1 Load	Heifers	750 lbs.	Central Carolina Alliance <b>**All-Natural**</b>	Page 7
Lot 9133	1 Load	Steers Heifers	635 lbs. 605 lbs.	Central Carolina Alliance <b>**All-Natural**</b>	Page 7
Lot 9134	1 Load	Steers	600 lbs.	Donald Chriscoe Farm	Page 8
Lot 9135	1/2 Load	Steers	700 lbs.	McIntyre Farms <b>**All-Natural**</b>	Page 9
Lot 9136	1 Load	Steers	710 lbs.	Richardson & Williams Farm <b>**All-Natural**</b>	Page 9
Lot 9137	1 Load	Steers	725 lbs.	Hill Creek Farms <b>**All-Natural**</b>	Page 10
Lot 9138	1 Load	Steers	725 lbs.	Hill Creek Farms <b>**All-Natural**</b>	Page 10
Lot 9139	1 Load	Steers	725 lbs.	Bowman Farms <b>**All-Natural**</b>	Page 11
Lot 9140	1 Load	Steers	725 lbs.	Calhoun Farms <b>**All-Natural**</b>	Page 11
Lot 9141	1 Load	Steers	735 lbs.	Backwood Farm	Page 12
Lot 9142	1 Load	Steers	740 lbs.	Catawba County Cattle Alliance	Page 12
Lot 9143	2 Loads	Steers	750 lbs.	3D Farms <b>**All-Natural**</b>	Page 13
Lot 9144	1 Load	Steers	750 lbs.	Piney Woods Farm <b>**All-Natural**</b>	Page 13
Lot 9145	1 Load	Steers	800 lbs.	Hannah Cattle Company	Page 14
Lot 9146	1 Load	Steers	815 lbs.	D.A. Hill Farms	Page 14
Lot 9147	1 Load	Steers	775 lbs.	Overbridge Farms <b>**All-Natural**</b>	Page 15
Lot 9148	1 Load	Steers	825 lbs.	Overbridge Farms <b>**All-Natural**</b>	Page 15
Lot 9149	1 Load	Steers	800 lbs.	Bowman Farms <b>**All-Natural**</b>	Page 16
Lot 9150	1 Load	Steers	875 lbs.	Bowman Farms <b>**All-Natural**</b>	Page 16

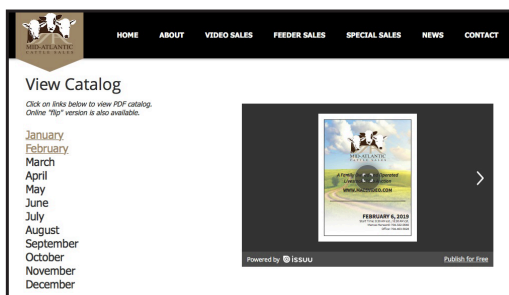
Most loads have weight stops at 25-50 lbs. over the base weight. The individual weight stops are posted on each lot. Cattle that are picked up after the stated delivery dates will be subject to a 3# per day increase on the base weight and any weight stops for each day late after the last stated delivery date.

# TABLE OF CONTENTS

## AUGUST 7, 2019

Lot 9151	1 Load	Heifers	600 lbs.	Donald Chriscoe Farm	Page 17
Lot 9152	1 Load	Heifers	630 lbs.	Overbridge Farms <b>**All-Natural**</b>	Page 17
Lot 9153	1 Load	Heifers	650 lbs.	Catawba County Cattle Alliance	Page 18
Lot 9154	1 Load	Heifers	665 lbs.	Benny Coleman	Page 18
Lot 9155	1 Load	Heifers	675 lbs.	Hannah Cattle Company	Page 19
Lot 9156	1 Load	Heifers	675 lbs.	Bowman Farms <b>**All-Natural**</b>	Page 19
Lot 9157	1 Load	Heifers	680 lbs.	Richardson & Williams Farm <b>**All-Natural**</b>	Page 20
Lot 9158	1 Load	Heifers	685 lbs.	Hy-Hope Farms <b>**All-Natural**</b>	Page 20
Lot 9159	1/2 Load	Heifers	700 lbs.	D.A. Hill Farms	Page 21
Lot 9160	1 Load	Heifers	750 lbs.	Bowman Farms <b>**All-Natural**</b>	Page 21
Lot 9161	1/2 Load	Steers Heifers	550 lbs. 500 lbs.	Sheek Farms <b>**All-Natural**</b>	Page 22
Lot 9162	1 Load	Steers Heifers	600 lbs. 700 lbs.	Son Rise Plantation <b>**All-Natural**</b>	Page 22
Lot 9163	1 Load	Steers Heifers	650 lbs. 625 lbs.	Calhoun Farms <b>**All-Natural**</b>	Page 23
Lot 9164	1 Load	Steers Heifers	720 lbs. 690 lbs.	William Brigman Farms <b>**All-Natural**</b>	Page 23
Lot 9165	1 Load	Steers Heifers	740 lbs. 685 lbs.	Richardson & Williams Farm <b>**All-Natural**</b>	Page 24
Lot 9166	1 Load	Steers Heifers	750 lbs. 675 lbs.	Kesler Brothers Farm <b>**All-Natural**</b>	Page 24

Most loads have weight stops at 25-50 lbs. over the base weight. The individual weight stops are posted on each lot. Cattle that are picked up after the stated delivery dates will be subject to a 3# per day increase on the base weight and any weight stops for each day late after the last stated delivery date.



Visit [www.MACSvideo.com](http://www.MACSvideo.com)  
for the online catalog for all sales

# 2019 UPCOMING SALES

All regular sales will be the first Wednesday of the month starting at 9:30 am est. (8:30 am cst.) unless noted with an asterisk (\*).

**August 7**  
**September 4**  
**October 2**  
**November 6**  
**December 4**



## GRADED FEEDER CALF SALES

*Cattle are grouped according to weight and grade. All calves have received at least one round of vaccinations including a modified live vaccine with pasteurella and a blackleg.*

**Stanly County Livestock Market • Norwood, NC**

**Sale time: 6:00 pm est.**

*Conference call available at sale time!*

**September 5 - BQA Weaned Sale**

**September 12 - Regular Feeder Sale (not weaned)**

**[www.macsvideo.com/feeder-sales](http://www.macsvideo.com/feeder-sales)**

**Lots 9131 - 9133: Central Carolina Livestock Alliance**  
7351 Beale Rd. Snow Camp, NC 20 miles southeast of Greensboro, NC

*Home-Raised, All-Natural, Backgrounded, Weaned, BQA Certified, GAP 4 Certified*

Central Carolina Livestock producers have come together to market their home-raised, performance driven calves together on truckload lots. All calves follow the same vaccination, nutrition, and genetic programs found on this page.

*For more information on the Central Carolina Alliance program, contact CCLA coordinator Frank Bell at 336-260-8190 or 336-584-7607.*

**Genetics:** Calves are predominantly Angus-Simmental calves carrying 1/4 to 1/2 Simmental genetics, sired by either SimAngus or Angus bulls. Extensive Artificial Insemination work has been used for many years. All bulls used are performance tested and come from reputable purebred breeders. These bulls include sons sired by PVF Rookie, GAR Predestined, RCR Stetson, and more.



**Performance:** Calves are **home-raised, backgrounded, weaned 45+ days, bunk broke, broke to waterers, docile, and triple vaccinated.** Heifers are guaranteed open. Vaccination protocol followed the Zoetis SelectVAC 45 program and was as follows:

**First Round:** Bovi-Shield Gold 5, UltraChoice 8, Dectomax Inject.

**Second Round:** Bovi-Shield Gold One Shot, UltraChoice 8

**Third Round:** Inforce 3



**Certifications:** All of these calves qualify as all-natural and producers are GAP 4\* Certified and BQA Certified.

*\*Producers are GAP Certified through IMI Global. The certification information will be transferred to the buyer at time of delivery.*



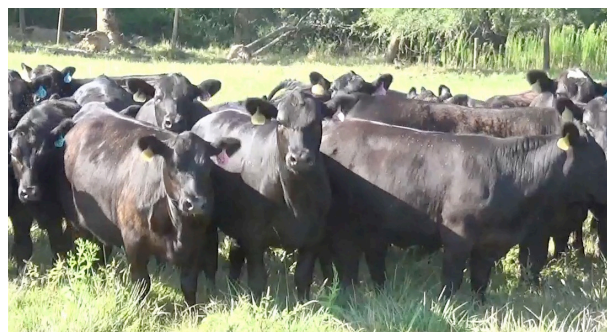
**August Alliance Producers**

Leo Boswell, Doug Gilliam, Tony Isley, Eric McPherson, and Barton Mitchell

**Lot 9131 STEERS - 1 Load (58 head)**

Price: \$ \_\_\_\_\_ Buyer # \_\_\_\_\_

Base Weight: 845 lbs. Wt Stop: 875 lbs. Variance: 200 lbs.  
 Contractor: Marcus Harward • 704-322-0840



**Central Carolina Livestock Alliance**  
 Snow Camp, NC • 20 miles southeast of Greensboro, NC

BLK/BWF	95%	#1	100%	FRAME: Medium
CH-X	5%	#1 <sup>1/2</sup>		
RED		#2		FLESH: Medium
RWF				
Other				

Delivery Date: August 9-15 Notice to load: 48 hours Shrink: None Slide: \$5/cwt topside only  
 Conditions: Cattle will be hauled 15-25 miles and weighed on the ground at the Alamance Cattlemen's barn.  
 Nutrition: Cattle are fed a commodity soyhull ration with grass, hay, and a chelated mineral program.  
 Vaccinations: Zoetis SelectVac, triple vaccinated. See protocol on previous page.

**Lot 9132 HEIFERS - 1 Load (67 head)**

Price: \$ \_\_\_\_\_ Buyer # \_\_\_\_\_

Base Weight: 750 lbs. Wt Stop: 780 lbs. Variance: 200 lbs.  
 Contractor: Marcus Harward • 704-322-0840



**Central Carolina Livestock Alliance**  
 Snow Camp, NC • 20 miles southeast of Greensboro, NC

BLK/BWF	95%	#1	100%	FRAME: Medium
CH-X	5%	#1 <sup>1/2</sup>		
RED		#2		FLESH: Medium
RWF				
Other				

Delivery Date: August 9-15 Notice to load: 48 hours Shrink: None Slide: \$5/cwt topside only  
 Conditions: Cattle will be hauled 15-25 miles and weighed on the ground at the Alamance Cattlemen's barn.  
 Nutrition: Cattle are fed a commodity soyhull ration with grass, hay, and a chelated mineral program.  
 Vaccinations: Zoetis SelectVac, triple vaccinated. See protocol on previous page.

**Lot 9133 STEERS & HEIFERS - 1 Load**

Price: \$ \_\_\_\_\_ Buyer # \_\_\_\_\_

31 Steers Wt: 635 lbs. Wt Stop: 665 lbs. Variance: 200 lbs.  
 34 Heifers Wt: 605 lbs. Wt Stop: 635 lbs. Variance: 200 lbs.



**Central Carolina Livestock Alliance**  
 Snow Camp, NC • 20 miles southeast of Greensboro, NC

BLK/BWF	95%	#1	100%	FRAME: Medium
CH-X	5%	#1 <sup>1/2</sup>		
RED		#2		FLESH: Medium
RWF				
Other				

Delivery Date: August 9-15 Notice to load: 48 hours Shrink: None Slide: \$6/cwt topside only  
 Conditions: Cattle will be hauled 15-25 miles and weighed on the ground at the Alamance Cattlemen's barn.  
 Nutrition: Cattle are fed a commodity soyhull ration with grass, hay, and a chelated mineral program.  
 Vaccinations: Zoetis SelectVac, triple vaccinated. See protocol on previous page.

*Heifers sell \$.07 back.*

**Don't forget you can watch and bid online!**



**INTERNET VIEWING & BIDDING**

To view the sale or bid online, visit [www.DVAuction.com](http://www.DVAuction.com). Find the "Mid-Atlantic Cattle Sales (Richfield, NC)" sale and click on "Details." From this page you can view the catalog, videos, or log in to watch the sale. If you have an account, log in and view the sale. If you do not, you must create an account under the "Create New Account" tab in the upper left hand corner of the screen. You will need to confirm this account through your e-mail.

**You DO NOT have to be approved just to watch the sale but you will still need to create an account with DVAuction.**  
**To register for a buyer's number, call Brooke at 704-322-9770 prior to the sale to be approved to bid online.**

**Lot 9134 STEERS - 1 Load**

Price: \$ \_\_\_\_\_ Buyer # \_\_\_\_\_

**Base Weight:** 600 lbs. **Wt Stop:** 625 lbs. **Variance:** 125 lbs.  
**Contractor:** Marcus Harward • 704-322-0840

**Donald Chriscoe Farm**  
 Asheboro, NC  
 40 miles south of Greensboro, NC

<b>BLK/BWF</b>	92%	<b>#1</b>	90%	<b>FRAME:</b> Medium
<b>CH-X</b>	4%	<b>#1<sup>1/2</sup></b>	10%	
<b>RED</b>	4%	<b>#2</b>		<b>FLESH:</b> Medium
<b>RWF</b>				
<b>Other</b>				



**Delivery Date:** August 9 - 16 **Shrink:** 2%  
**Notice to load:** 24 - 48 hours **Slide:** \$6/cwt topside only  
**Conditions:** Weighed on the ground on Certified Scales.  
**Nutrition:** Haylage and DDG TMR with access to mineral, hay, and some pasture.  
**Vaccinations:** Vista 5 (2x), Nuplura (1x), Vision 7 20/20 (1x), Occuguard Pinkeye  
**Implants:** None **Dewormer:** Ivomec Inject (2x)  
**Genetics:** Angus-X commercial. Sired by Angus and SimAngus bulls.  
**Other:** Weaned 90+ days. Bunk broke, broke to waters.



**Backgrounded, Weaned, BQA Certified**

A very good set of reputational steers from Donald Chriscoe. They have been weaned for over 90 days, are bunk broke, broke to Ritchie waters, and under a good health program. They were purchased from local producers or the Norwood Feeder Calf Sales, mainly using high-quality Angus bulls on Angus-X cows.



**Lot 9135 STEERS - Partial Load, 40 Head**

Price: \$ \_\_\_\_\_ Buyer # \_\_\_\_\_

**Base Weight:** 700 lbs. **Wt Stop:** 735 lbs. **Variance:** 150 lbs.  
**Contractor:** Marcus Harward • 704-322-0840

**McIntyre Farms**  
 Marion, SC  
 23 miles east of Florence, SC

<b>BLK/BWF</b> 36 hd.	<b>#1</b> 95%	<b>FRAME:</b> Medium
<b>CH-X</b> 4 hd.	<b>#1<sup>1/2</sup></b> 5%	
<b>RED</b>	<b>#2</b>	<b>FLESH:</b> Medium
<b>RWF</b>		
<b>Other</b>		



**Delivery Date:** September 9 - 13 **Shrink:** 2%  
**Notice to load:** 48 hours **Slide:** \$5/cwt topside only  
**Conditions:** 15 miles weighed on the truck on Certified Scales.  
**Nutrition:** 7-8# per day of grower feed with free choice mineral, pasture, and hay.  
**Vaccinations:** Bovi-Shield Gold 5 (1x), Bovi-Shield One Shot (1x), Ultrabac 7w/somnus (2x)  
**Implants:** None **Dewormer:** Dectomax Pour-On  
**Genetics:** 50-75% Angus. Sired by Angus bulls out of crossbred cows.  
**Other:** Weaned 60+ days. Bunk broke.



**Home-Raised, All-Natural, Backgrounded, Weaned, BQA Certified.**

A very good partial load of 40 head of steers. They are thick-muscled and carry good hair in the winter. They have mainly be running on grass and hay with a little feed. They are all carrying just a medium flesh. All calves are sired by Angus bulls and ch-x will all have a black nose. *GAP-4 Certified through Pineland Farms.*

**Lot 9136 STEERS - 1 Load (67 head)**

Price: \$ \_\_\_\_\_ Buyer # \_\_\_\_\_

**Base Weight:** 710 lbs. **Wt Stop:** 745 lbs. **Variance:** 125 lbs.  
**Contractor:** Marcus Harward • 704-322-0840

**Richardson & Williams Farm (R&W Farm)**  
 Brittons Neck, SC  
 40 miles east of Florence, SC off Hwy 908

<b>BLK/BWF</b> 95%	<b>#1</b> 95%	<b>FRAME:</b> Medium
<b>CH-X</b> 5%	<b>#1<sup>1/2</sup></b> 5%	
<b>RED</b>	<b>#2</b>	<b>FLESH:</b> Medium
<b>RWF</b>		
<b>Other</b>		



**Delivery Date:** August 27 - 28 **Shrink:** 2%  
**Notice to load:** 48 hours **Slide:** \$5/cwt topside only  
**Conditions:** 5 miles weighed on the truck on Certified Scales.  
**Nutrition:** 8# per day of commodity blend feed with free choice mineral, pasture, and hay.  
**Vaccinations:** CattleMaster Gold FP 5 (1x), Bovi-Shield Gold 5 (1x), One Shot Ultra (1x), Ultrabac 7 (1x)  
**Implants:** None **Dewormer:** Valbazen drench, Eprinex Pour-On  
**Genetics:** 50-75% Angus. Sired by Angus and SimAngus bulls.  
**Other:** Weaned 60+ days. Bunk broke.



**Home-Raised, All-Natural, Backgrounded, Weaned, BQA Certified, GAP Certified.**

A fancy load of home-raised, thick-muscled predominantly black steers that have been very well managed. They are double vaccinated, weaned, and are docile. Calves are sired by top Angus and SimAngus bulls. They qualify as all-natural and will have a GAP certificate that can transfer with the cattle.

*Cattle that are picked up after the stated delivery dates will be subject to a 3# per day increase on the base weight and any weight stops for each day late after the last stated delivery date.*

**Lot 9137 STEERS - 1 Load**

Price: \$ \_\_\_\_\_ Buyer # \_\_\_\_\_

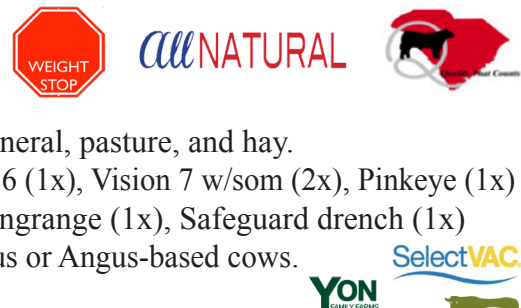
**Base Weight:** 725 lbs. **Wt Stop:** 750 lbs. **Variance:** 150 lbs.  
**Contractor:** Marcus Harward • 704-322-0840

**Hill Creek Farms - John Rogers**  
 Hartsville, SC  
 20 miles NW of Florence, SC off US Hwy 15

<b>BLK/BWF</b>	10%	<b>#1</b>	95%	<b>FRAME:</b> Medium
<b>CH-X</b>	8%	<b>#1<sup>1/2</sup></b>	5%	
<b>RED</b>	2%	<b>#2</b>		<b>FLESH:</b> Medium
<b>RWF</b>				
<b>Other</b>				



**Delivery Date:** August 26 - 30 **Shrink:** 2%  
**Notice to load:** 48 hours **Slide:** \$5/cwt topside only  
**Conditions:** Weighed on the farm on Certified Scales.  
**Nutrition:** 6# per day of commodity blend feed with free choice mineral, pasture, and hay.  
**Vaccinations:** Bovi-Shield Gold 5 (1x), One Shot Ultra (1x), Vira-Shield 6 (1x), Vision 7 w/som (2x), Pinkeye (1x)  
**Implants:** None **Dewormer:** Longrange (1x), Safeguard drench (1x)  
**Genetics:** 50-75%+ Angus. Sired by Angus bulls out of mainly Angus or Angus-based cows.  
**Other:** Weaned 60+ days. Bunk broke.



**Home-Raised, All-Natural, Backgrounded, Weaned, BQA Certified, GAP Certified.**

A very nice set of home-raised steers that are triple vaccinated and bunk broke. They are Angus-based, using a high majority of Yon Angus genetics. They are on an excellent vaccination program with complete records. They are broke to waterers and a hot wire fence. *GAP-4 Certified through Pineland Farms.*



**Lot 9138 STEERS - 1 Load**

Price: \$ \_\_\_\_\_ Buyer # \_\_\_\_\_

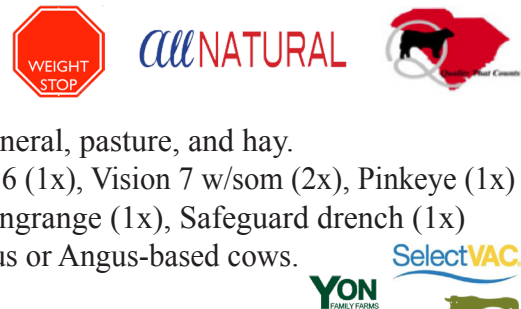
**Base Weight:** 725 lbs. **Wt Stop:** 750 lbs. **Variance:** 150 lbs.  
**Contractor:** Marcus Harward • 704-322-0840

**Hill Creek Farms - John Rogers**  
 Hartsville, SC  
 20 miles NW of Florence, SC off US Hwy 15

<b>BLK/BWF</b>	10%	<b>#1</b>	95%	<b>FRAME:</b> Medium
<b>CH-X</b>	8%	<b>#1<sup>1/2</sup></b>	5%	
<b>RED</b>	2%	<b>#2</b>		<b>FLESH:</b> Medium
<b>RWF</b>				
<b>Other</b>				



**Delivery Date:** September 23 - 27 **Shrink:** 2%  
**Notice to load:** 48 hours **Slide:** \$5/cwt topside only  
**Conditions:** Weighed on the farm on Certified Scales.  
**Nutrition:** 6# per day of commodity blend feed with free choice mineral, pasture, and hay.  
**Vaccinations:** Bovi-Shield Gold 5 (1x), One Shot Ultra (1x), Vira-Shield 6 (1x), Vision 7 w/som (2x), Pinkeye (1x)  
**Implants:** None **Dewormer:** Longrange (1x), Safeguard drench (1x)  
**Genetics:** 50-75%+ Angus. Sired by Angus bulls out of mainly Angus or Angus-based cows.  
**Other:** Weaned 60+ days. Bunk broke.



**Home-Raised, All-Natural, Backgrounded, Weaned, BQA Certified, GAP Certified.**

Another nice set of home-raised steers that are triple vaccinated and bunk broke, just loading out a month later. They are Angus-based, using a high majority of Yon Angus genetics. They are on an excellent vaccination program with complete records. They are broke to waterers and a hot wire fence. *GAP-4 Certified through Pineland Farms.*



**Lot 9139 STEERS - 1 Load**

Price: \$ \_\_\_\_\_ Buyer # \_\_\_\_\_

**Base Weight:** 725 lbs. **Wt Stop:** 775 lbs. **Variance:** 150 lbs.  
**Contractor:** David Landreth • 864-444-8214

**Bowman Farms - William Bowman**  
 Iva, SC  
 45 miles southwest of Greenville, SC

<b>BLK/BWF</b>	50%	<b>#1</b>	95%	<b>FRAME:</b> Medium
<b>CH-X</b>	35%	<b>#1<sup>1/2</sup></b>	5%	
<b>RED</b>	15%	<b>#2</b>		<b>FLESH:</b> Medium
<b>RWF</b>				
<b>Other</b>				



**Delivery Date:** November 11 - 15 **Shrink:** 2%  
**Notice to load:** 48 hours **Slide:** \$5/cwt topside only  
**Conditions:** 15 miles, weighed on the truck on Certified Scales.  
**Nutrition:** 10-12# per day of 13% TMR feed with free choice mineral, pasture, and hay.  
**Vaccinations:** Vira Shield 6 VL5 HB (1x), Vista Once (1x), Cavalry 9 (2x)  
**Implants:** None **Dewormer:** Eprinex (1x), Safeguard (1x)  
**Genetics:** 50%+ Angus. Sired by Angus, Charolais, or Red Angus bulls.  
**Other:** Weaned 45+ days. Bunk broke.



**Home-Raised, All-Natural, Backgrounded, Weaned, BQA Certified, GAP Certified.**

A fancy set of home-raised, all-natural steers. They are Angus or Red Angus based with a few sired by Charolais bulls that were only bred to black cows. Genetics include Yon, Bricton Angus, and Clemson bulls. 5% of the calves will have a touch of ear. They will be weaned 45+ days at delivery. *GAP-4 Certified through Pineland Farms.*

**Lot 9140 STEERS - 1 Load**

Price: \$ \_\_\_\_\_ Buyer # \_\_\_\_\_

**Base Weight:** 725 lbs. **Wt Stop:** 755 lbs. **Variance:** 150 lbs.  
**Contractor:** Marcus Harward • 704-322-0840

**Calhoun Farms - Davis Calhoun**  
 Clio, SC  
 40 miles northwest of Florence, SC

<b>BLK/BWF</b>	55%	<b>#1</b>	95%	<b>FRAME:</b> Medium
<b>CH-X</b>	5%	<b>#1<sup>1/2</sup></b>	5%	
<b>RED</b>	40%	<b>#2</b>		<b>FLESH:</b> Medium
<b>RWF</b>				
<b>Other</b>				



**Delivery Date:** September 16 - 20 **Shrink:** 2%  
**Notice to load:** 48 hours **Slide:** \$5/cwt topside only  
**Conditions:** 10 miles, weighed on the truck on Certified Scales.  
**Nutrition:** 10# per day of TMR with free choice mineral, pasture, and hay.  
**Vaccinations:** Pyramid 5 + Presponse (1x), Triangle 10 (1x), Vision 7 (2x)  
**Implants:** None **Dewormer:** Cydectin (1x), Ivermectin (1x)  
**Genetics:** Angus, SimAngus, and Red Angus. Sires are from Cooper Angus and Bull Hill Ranch Red Angus.  
**Other:** Weaned 90 days. Bunk broke.



**Home-Raised, All-Natural, Backgrounded, Weaned, BQA Certified, GAP Certified.**

A very good load of steers that are home-raised, all-natural, and will be weaned for 90 days at time of delivery. These are reputation cattle sold on truckloads for many years. Cattle are at least half Angus and out of good Angus-x-Continental based cows. A very good set of steers. *GAP-4 Certified through Pineland Farms.*

**Lot 9141 STEERS - 1 Load (70 head)**

Price: \$ \_\_\_\_\_ Buyer # \_\_\_\_\_

**Base Weight:** 735 lbs. **Wt Stop:** 760 lbs. **Variance:** 220 lbs.  
**Contractor:** Bruce Shankle • 704-694-8686

**Backwood Farm - Dale Hinson**  
 Marshville, NC  
 25 miles east of Charlotte, NC

<b>BLK/BWF</b> 100%	<b>#1</b> 90%	<b>FRAME:</b> 85% Medium 15% Large
<b>CH-X</b>	<b>#1<sup>1/2</sup></b> 10%	
<b>RED</b>	<b>#2</b>	<b>FLESH:</b> Medium
<b>RWF</b>		
<b>Other</b>		



**Delivery Date:** August 8 - 16 **Shrink:** 2%  
**Notice to load:** 24 - 48 hours **Slide:** \$5/cwt topside only  
**Conditions:** Weighed on the ground on Certified Scales.  
**Nutrition:** 14% free choice commodity pellet. Free choice mineral, pasture, and hay.  
**Vaccinations:** Vista 5 SQ (1x), Vista Once (1x), Vision 7 (1x), Vision 7 w/ somnus (1x)  
**Implants:** Ralgro **Dewormer:** Safeguard  
**Genetics:** Sired by Angus and Simmental bulls out of black Angus-x-Continental cows.  
**Other:** Weaned 45+ days.



**Home-Raised, Backgrounded, Weaned, BQA Certified.**

A very nice load of home-raised steers that are all black or bwf. They were all born in the fall of 2018, double vaccinated on the Merck program, and weaned for 45+ days. There are 3-4 calves that have a flick of ear. There are 8-10 head coming from a neighboring farm to complete the load that are on the same program.

**Lot 9142 STEERS - 1 Load**

Price: \$ \_\_\_\_\_ Buyer # \_\_\_\_\_

**Base Weight:** 740 lbs. **Wt Stop:** 770 lbs. **Variance:** 200 lbs.  
**Contractor:** Marcus Harward • 704-322-0840

**Catawba County Cattle Alliance**  
 Catawba, NC  
 15 miles west of Statesville, NC

<b>BLK/BWF</b> 95%	<b>#1</b> 95%	<b>FRAME:</b> Medium
<b>CH-X</b> 5%	<b>#1<sup>1/2</sup></b> 10%	
<b>RED</b>	<b>#2</b>	<b>FLESH:</b> Medium
<b>RWF</b>		
<b>Other</b>		



**Delivery Date:** August 20 - 23 **Shrink:** None  
**Notice to load:** 48 hours **Slide:** \$5/cwt topside only  
**Conditions:** 10-20 miles, weighed on the ground on Cert Scales.  
**Nutrition:** Hand fed commodity pellets with free choice grass, mineral, and hay.  
**Vaccinations:** Bovi-Shield Gold One Shot (1x), Boci-Shield Gold 5 (1x), Ultrabac 7 (2x)  
**Implants:** Ralgro **Dewormer:** Safeguard, LongRange  
**Genetics:** 75%+ Angus. Sired by Angus or SimAngus bulls out of Angus-x-Continental cows.  
**Other:** Weaned 45+ days. Bunk broke.



**Home-Raised, Backgrounded, Weaned, BQA Certified.**

The Catawba County Cattle Alliance is comprised of producers who all follow the same vaccination and management protocols and use similar genetics. Calves are all home-raised, weaned 45+ days, and follow the NC BQA Sale protocols. Calves are Angus-based, are docile, and are bunk broke. Calves will be hauled 10-20 miles to the Catawba Cattlemen's barn and weighed on the ground on Certified Scales.

*Cattle that are picked up after the stated delivery dates will be subject to a 3# per day increase on the base weight and any weight stops for each day late after the last stated delivery date.*

**Lot 9143 STEERS - 2 Loads**

Price: \$ \_\_\_\_\_ Buyer # \_\_\_\_\_

**Base Weight:** 750 lbs. **Wt Stop:** 790 lbs. **Variance:** 125 lbs.  
**Contractor:** Marcus Harward • 704-322-0840

**3D Farms - Joey & John Doyle**  
 Marion, SC  
 20 miles east of Florence, SC

<b>BLK/BWF</b> 98%	<b>#1</b> 95%	<b>FRAME:</b> 95% Medium 5% Large
<b>CH-X</b> 2%	<b>#1<sup>1/2</sup></b> 5%	
<b>RED</b>	<b>#2</b>	<b>FLESH:</b> Medium
<b>RWF</b>		
<b>Other</b>		



**Delivery Date:** October 21 - 25 **Shrink:** 2%  
**Notice to load:** 48 hours **Slide:** \$5/cwt topside only  
**Conditions:** 20 miles, weighed on the truck on Certified Scales.  
**Nutrition:** 8# 14% TMR commodity feed with free choice mineral, pasture, and hay.  
**Vaccinations:** Vista Once (1x), Vista 5 (1x), Cavalry 9 (2x)  
**Implants:** None **Dewormer:** Safeguard (2x)  
**Genetics:** Angus and Ultrablack. Sired by Angus or Ultrablack bulls, out of Ultrablack based cows.  
**Other:** Weaned 45-60 days at load out. Bunk broke.



**Home-Raised, All-Natural, Backgrounded, Weaned, BQA Certified, GAP Certified.**

An excellent group of reputational steers that are home-raised and all-natural. Genetics are from Yon Family Farms and Cow Creek Ranch. Calves will carry 1/8 ear or less. They are thick-muscled, moderate framed cattle that carry good winter hair. 3D Farms is GAP certified and the certificate can transfer with the cattle.

**Lot 9144 STEERS - 1 Load**

Price: \$ \_\_\_\_\_ Buyer # \_\_\_\_\_

**Base Weight:** 750 lbs. **Wt Stop:** 780 lbs. **Variance:** 150 lbs.  
**Contractor:** Jeff Martin • 910-379-9173

**Piney Woods Farm - Buron Lanier**  
 Burgaw, NC  
 40 miles southeast of Clinton, NC

<b>BLK/BWF</b> 50%	<b>#1</b> 95%	<b>FRAME:</b> Medium
<b>CH-X</b>	<b>#1<sup>1/2</sup></b> 5%	
<b>RED</b> 50%	<b>#2</b>	<b>FLESH:</b> Medium
<b>RWF</b>		
<b>Other</b>		



**Delivery Date:** August 26 - 30 **Shrink:** 2%  
**Notice to load:** 48 hours **Slide:** \$5/cwt topside only  
**Conditions:** 5 miles weighed on the truck on Certified Scales.  
**Nutrition:** 10-12# TMR with free choice mineral, pasture, and hay.  
**Vaccinations:** Bovi-Shield Gold One Shot (1x), Inforce 3 (1x), One Shot BVD (1x), Ultrachoice 7 (2x)  
**Implants:** None **Dewormer:** Valbazen, LongRange  
**Genetics:** Angus/RedAngus. Sired by Red Angus bulls - some sired by AI sire Pacesetter  
**Other:** Weaned 120 days at load out. Bunk broke.



**Home-Raised, All-Natural, Backgrounded, Weaned, BQA Certified, GAP Certified.**

A fancy load of home-raised, all-natural, backgrounded steers. Steers are under a very good management program and will be weaned for 120 days at time of delivery. Cattle are all sired by Red Angus bulls and out of Angus or Red Angus based cows. An excellent group of steers. Steers will be GAP certified pending an audit the week of the sale.

**Lot 9145 STEERS - 1 Load**

Price: \$ \_\_\_\_\_ Buyer # \_\_\_\_\_

**Base Weight:** 800 lbs. **Wt Stop:** 835 lbs. **Variance:** 150 lbs.  
**Contractor:** Marcus Harward • 704-322-0840

**Hannah Cattle Company - Matt Hannah**  
 Mocksville, NC  
 25 miles northeast of Statesville, NC

<b>BLK/BWF</b> 90%	<b>#1</b> 90%	<b>FRAME:</b> Medium
<b>CH-X</b> 7%	<b>#1<sup>1/2</sup></b> 10%	
<b>RED</b> 3%	<b>#2</b>	<b>FLESH:</b> Medium
<b>RWF</b>		
<b>Other</b>		



**Delivery Date:** August 19 - 23 **Shrink:** 2%  
**Notice to load:** 48 hours **Slide:** \$5/cwt topside only  
**Conditions:** Hauled 10 miles, weighed on the truck  
**Nutrition:** 8-10# of a high-fiber commodity feed with access to mineral, hay, and pasture.  
**Vaccinations:** Vista Once (1x), Vista 5 (1x), Cavalry 9 (2x)  
**Implants:** Revalor (1x) **Dewormer:** Safeguard (1x), Cydectin Inject. (1x)  
**Genetics:** Angus-X commercial.  
**Other:** Weaned 100+ days. Bunk broke, broke to waters.



**Backgrounded, Weaned, BQA Certified**

A very good set of backgrounded, reputational steers. They were brought in as 5 and 6-weights and have mainly been grazing grass with a little feed. They have been double vaccinated under a very good health program. There are a few steers with a few ringworm spots. A good load of backgrounded steers ready to go to feed.

**Lot 9146 STEERS - 1 Load**

Price: \$ \_\_\_\_\_ Buyer # \_\_\_\_\_

**Base Weight:** 815 lbs. **Wt Stop:** 840 lbs. **Variance:** 150 lbs.  
**Contractor:** Bruce Shankle • 704-694-8686

**D.A. Hill Farms - David Hill**  
 Ansonville, NC  
 35 miles east of Charlotte, NC

<b>BLK/BWF</b> 60 hd	<b>#1</b> 100%	<b>FRAME:</b> Medium
<b>CH-X</b> 4 hd	<b>#1<sup>1/2</sup></b>	
<b>RED</b>	<b>#2</b>	<b>FLESH:</b> Medium
<b>RWF</b> 6 hd		
<b>Other</b>		



**Delivery Date:** August 8 - 16 **Shrink:** 2%  
**Notice to load:** 24 - 48 hours **Slide:** \$5/cwt topside only  
**Conditions:** Weighed on the ground on Certified Scales.  
**Nutrition:** 14% TMR free choice. Free choice mineral, pasture, and alfalfa hay.  
**Vaccinations:** Vista 5 SQ (1x), Vista Once (1x), Vision 7 (1x), Vision 7 w/ somnus (1x)  
**Implants:** Ralgro **Dewormer:** Dectomax  
**Genetics:** Sired by Angus and Hereford bulls out of black Angus-x-Continental cows.  
**Other:** Weaned 60+ days.



**Home-Raised, Backgrounded, Weaned, BQA Certified.**

A very good load of home-raised, backgrounded steers. They are all Angus or Hereford sired and born in September or October 2018. They will be weaned for 60+ days at delivery and have been double vaccinated according to the NC BQA Sale program. There are 70 head to sort from. A good load of steers ready to go to feed.

**Lot 9147 STEERS - 1 Load**

Price: \$ \_\_\_\_\_ Buyer # \_\_\_\_\_

**Base Weight:** 775 lbs. **Wt Stop:** 800 lbs. **Variance:** 150 lbs.  
**Contractor:** David Landreth • 864-444-8214

**Overbridge Farms - John Long**  
 Newberry, SC  
 40 miles northwest of Columbia, SC

<b>BLK/BWF</b>	70%	<b>#1</b>	95%	<b>FRAME:</b> Medium
<b>CH-X</b>	20%	<b>#1<sup>1/2</sup></b>	5%	
<b>RED</b>	10%	<b>#2</b>		<b>FLESH:</b> Medium
<b>RWF</b>				
<b>Other</b>				



**Delivery Date:** August 26 - 30 **Shrink:** 2%  
**Notice to load:** 48 hours **Slide:** \$5/cwt topside only  
**Conditions:** Weighed on the ground on Certified Scales.  
**Nutrition:** 10-15# corn silage & ground feed TMR with free choice mineral, pasture, and hay.  
**Vaccinations:** Vista Once (1x), Vista 5 (1x), Vision 7 w/somnus (2x)  
**Implants:** None **Dewormer:** LongRange (1x), Noromectin (1x)  
**Genetics:** Sired by Angus and SimAngus bulls. Out of Angus-X and Char-X cows.  
**Other:** Weaned 45+ days at load out. Bunk broke.



**Home-Raised, All-Natural, Backgrounded, Weaned, BQA Certified, Pending GAP certification**  
 A very good set of steers that are home-raised, backgrounded, double vaccinated, and very docile. They are out of high-quality Angus, SimAngus, and Charolais genetics. They are in the middle of being GAP certified - more information available the week of sale about GAP certification. Would like to load both steer loads the same day if possible.

**Lot 9148 STEERS - 1 Load**

Price: \$ \_\_\_\_\_ Buyer # \_\_\_\_\_

**Base Weight:** 825 lbs. **Wt Stop:** 850 lbs. **Variance:** 150 lbs.  
**Contractor:** David Landreth • 864-444-8214

**Overbridge Farms - John Long**  
 Newberry, SC  
 40 miles northwest of Columbia, SC

<b>BLK/BWF</b>	70%	<b>#1</b>	95%	<b>FRAME:</b> Medium
<b>CH-X</b>	20%	<b>#1<sup>1/2</sup></b>	5%	
<b>RED</b>	10%	<b>#2</b>		<b>FLESH:</b> Medium
<b>RWF</b>				
<b>Other</b>				



**Delivery Date:** August 26 - 30 **Shrink:** 2%  
**Notice to load:** 48 hours **Slide:** \$5/cwt topside only  
**Conditions:** Weighed on the ground on Certified Scales.  
**Nutrition:** 10-15# corn silage & ground feed TMR with free choice mineral, pasture, and hay.  
**Vaccinations:** Vista Once (1x), Vista 5 (1x), Vision 7 w/somnus (2x)  
**Implants:** None **Dewormer:** LongRange (1x), Noromectin (1x)  
**Genetics:** Sired by Angus and SimAngus bulls. Out of Angus-X and Char-X cows.  
**Other:** Weaned 45+ days at load out. Bunk broke.



**Home-Raised, All-Natural, Backgrounded, Weaned, BQA Certified, Pending GAP certification**  
 Another very good set of steers that are home-raised, backgrounded, double vaccinated, and very docile. They are out of high-quality Angus, SimAngus, and Charolais genetics. They are in the middle of being GAP certified - more information available the week of sale about GAP certification. Would like to load both steer loads the same day if possible.

**Lot 9149 STEERS - 1 Load**

Price: \$ \_\_\_\_\_ Buyer # \_\_\_\_\_

**Base Weight:** 800 lbs. **Wt Stop:** 850 lbs. **Variance:** 150 lbs.  
**Contractor:** David Landreth • 864-444-8214

**Bowman Farms - William Bowman**  
 Iva, SC  
 45 miles southwest of Greenville, SC

<b>BLK/BWF</b> 50%	<b>#1</b> 95%	<b>FRAME:</b> Medium
<b>CH-X</b> 35%	<b>#1<sup>1/2</sup></b> 5%	
<b>RED</b> 15%	<b>#2</b>	<b>FLESH:</b> Medium
<b>RWF</b>		
<b>Other</b>		



**Delivery Date:** October 28 - November 1 **Shrink:** 2%  
**Notice to load:** 48 hours **Slide:** \$5/cwt topside only  
**Conditions:** 15 miles, weighed on the truck on Certified Scales.  
**Nutrition:** 10-12# per day of 13% TMR feed with free choice mineral, pasture, and hay.  
**Vaccinations:** Vira Shield 6 VL5 HB (1x), Vista Once (1x), Cavalry 9 (2x)  
**Implants:** None **Dewormer:** Eprinex (1x), Safeguard (1x)  
**Genetics:** 50%+ Angus. Sired by Angus, Charolais, or Red Angus bulls.  
**Other:** Weaned 45+ days. Bunk broke.



*All* NATURAL



**PrimeVAC**  
 BY MERCK ANIMAL HEALTH

**YON**  
 FAMILY FARMS

global animal  
 PARTNERSHIP

**Home-Raised, All-Natural, Backgrounded, Weaned, BQA Certified, GAP Certified.**

A fancy set of home-raised, all-natural steers. They are Angus or Red Angus based with a few sired by Charolais bulls that were only bred to black cows. Genetics include Yon, Bricton Angus, and Clemson bulls. 5% of the calves will have a touch of ear. They will be weaned 45+ days at delivery. *GAP-4 Certified through Pineland Farms.*

**Lot 9150 STEERS - 1 Load**

Price: \$ \_\_\_\_\_ Buyer # \_\_\_\_\_

**Base Weight:** 875 lbs. **Wt Stop:** 925 lbs. **Variance:** 150 lbs.  
**Contractor:** David Landreth • 864-444-8214

**Bowman Farms - William Bowman**  
 Iva, SC  
 45 miles southwest of Greenville, SC

<b>BLK/BWF</b> 50%	<b>#1</b> 95%	<b>FRAME:</b> Medium
<b>CH-X</b> 35%	<b>#1<sup>1/2</sup></b> 5%	
<b>RED</b> 15%	<b>#2</b>	<b>FLESH:</b> Medium
<b>RWF</b>		
<b>Other</b>		



**Delivery Date:** October 28 - November 1 **Shrink:** 2%  
**Notice to load:** 48 hours **Slide:** \$5/cwt topside only  
**Conditions:** 15 miles, weighed on the truck on Certified Scales.  
**Nutrition:** 10-12# per day of 13% TMR feed with free choice mineral, pasture, and hay.  
**Vaccinations:** Vira Shield 6 VL5 HB (1x), Vista Once (1x), Cavalry 9 (2x)  
**Implants:** None **Dewormer:** Eprinex (1x), Safeguard (1x)  
**Genetics:** 50%+ Angus. Sired by Angus, Charolais, or Red Angus bulls.  
**Other:** Weaned 45+ days. Bunk broke.



*All* NATURAL



**PrimeVAC**  
 BY MERCK ANIMAL HEALTH

**YON**  
 FAMILY FARMS

global animal  
 PARTNERSHIP

**Home-Raised, All-Natural, Backgrounded, Weaned, BQA Certified, GAP Certified.**

A fancy set of home-raised, all-natural steers. They are Angus or Red Angus based with a few sired by Charolais bulls that were only bred to black cows. Genetics include Yon, Bricton Angus, and Clemson bulls. 5% of the calves will have a touch of ear. They will be weaned 45+ days at delivery. *GAP-4 Certified through Pineland Farms.*



**Lot 9151 HEIFERS - 1 Load**

Price: \$ \_\_\_\_\_ Buyer # \_\_\_\_\_

**Base Weight:** 600 lbs. **Wt Stop:** 625 lbs. **Variance:** 125 lbs.  
**Contractor:** Marcus Harward • 704-322-0840

**Donald Chriscoe Farm**  
 Asheboro, NC  
 40 miles south of Greensboro, NC

<b>BLK/BWF</b> 92%	<b>#1</b> 90%	<b>FRAME:</b> Medium
<b>CH-X</b> 4%	<b>#1<sup>1/2</sup></b> 10%	
<b>RED</b> 4%	<b>#2</b>	<b>FLESH:</b> Medium
<b>RWF</b>		
<b>Other</b>		



**Delivery Date:** August 9 - 16 **Shrink:** 2%  
**Notice to load:** 24 - 48 hours **Slide:** \$6/cwt topside only  
**Conditions:** Weighed on the ground on Certified Scales.  
**Nutrition:** Haylage and DDG TMR with access to mineral, hay, and some pasture.  
**Vaccinations:** Vista 5 (2x), Nuplura (1x), Vision 7 20/20 (1x), Occuguard Pinkeye  
**Implants:** None **Dewormer:** Ivomec Inject (2x)  
**Genetics:** Angus-X commercial. Sired by Angus and SimAngus bulls.  
**Other:** Weaned 90+ days. Bunk broke, broke to waters.



**Backgrounded, Weaned, Guaranteed Open, BQA Certified**

A very good set of reputational heifers from Donald Chriscoe. They have been weaned for over 90 days, are bunk broke, broke to Ritchie waters, and under a good health program. They have been sleeved and will be guaranteed open. They were purchased from local producers, mainly using high-quality Angus bulls on Angus-X cows.

**Lot 9152 HEIFERS - 1 Load**

Price: \$ \_\_\_\_\_ Buyer # \_\_\_\_\_

**Base Weight:** 630 lbs. **Wt Stop:** 655 lbs. **Variance:** 150 lbs.  
**Contractor:** David Landreth • 864-444-8214

**Overbridge Farms - John Long**  
 Newberry, SC  
 40 miles northwest of Columbia, SC

<b>BLK/BWF</b> 95%	<b>#1</b> 95%	<b>FRAME:</b> Medium
<b>CH-X</b> 5%	<b>#1<sup>1/2</sup></b> 5%	
<b>RED</b>	<b>#2</b>	<b>FLESH:</b> Medium
<b>RWF</b>		
<b>Other</b>		



**Delivery Date:** September 9 - 13 **Shrink:** 2%  
**Notice to load:** 48 hours **Slide:** \$6/cwt topside only  
**Conditions:** Weighed on the ground on Certified Scales.  
**Nutrition:** 10-15# corn silage & ground feed TMR with free choice mineral, pasture, and hay.  
**Vaccinations:** Vista Once (1x), Vista 5 (1x), Vision 7 w/somnus (2x)  
**Implants:** None **Dewormer:** LongRange (1x), Noromectin (1x)  
**Genetics:** Sired by Angus and SimAngus bulls. Out of Angus-X and Char-X cows.  
**Other:** Weaned 45+ days at load out. Bunk broke.



**Home-Raised, All-Natural, Backgrounded, Weaned, Guaranteed Open, Pending GAP certification**

A very good set of heifers that are home-raised, backgrounded, double vaccinated, and very docile. They are out of high-quality Angus, SimAngus, and Charolais genetics. They are in the middle of being GAP certified - more information available the week of sale about GAP certification. A very nice set of heifers to go out in September.

**Lot 9153 HEIFERS - 1 Load**

Price: \$ \_\_\_\_\_ Buyer # \_\_\_\_\_

**Base Weight:** 650 lbs. **Wt Stop:** 680 lbs. **Variance:** 200 lbs.  
**Contractor:** Marcus Harward • 704-322-0840

**Catawba County Cattle Alliance**  
 Catawba, NC  
 15 miles west of Statesville, NC

<b>BLK/BWF</b> 95%	<b>#1</b> 95%	<b>FRAME:</b> Medium
<b>CH-X</b> 5%	<b>#1<sup>1/2</sup></b> 10%	
<b>RED</b>	<b>#2</b>	
<b>RWF</b>	<b>FLESH:</b> Medium	
<b>Other</b>		



**Delivery Date:** August 20 - 23 **Shrink:** None  
**Notice to load:** 48 hours **Slide:** \$6/cwt topside only  
**Conditions:** 10-20 miles, weighed on the ground on Cert Scales.  
**Nutrition:** Hand fed commodity pellets with free choice grass, mineral, and hay.  
**Vaccinations:** Bovi-Shield Gold One Shot (1x), Boci-Shield Gold 5 (1x), Ultrabac 7 (2x)  
**Implants:** None **Dewormer:** Safeguard, LongRange  
**Genetics:** 75%+ Angus. Sired by Angus or SimAngus bulls out of Angus-x-Continental cows.  
**Other:** Weaned 45+ days. Bunk broke.



**Home-Raised, Backgrounded, Weaned, Guaranteed Open, BQA Certified.**

The Catawba County Cattle Alliance is comprised of producers who all follow the same vaccination and management protocols and use similar genetics. Calves are all home-raised, weaned 45+ days, and follow the NC BQA Sale protocols. Calves are Angus-based, are docile, and are bunk broke. Calves will be hauled 10-20 miles to the Catawba Cattlemen's barn and weighed on the ground on Certified Scales.

**Lot 9154 HEIFERS - 1 Load**

Price: \$ \_\_\_\_\_ Buyer # \_\_\_\_\_

**Base Weight:** 665 lbs. **Wt Stop:** 690 lbs. **Variance:** 125 lbs.  
**Contractor:** David Landreth • 864-444-8214

**Benny Coleman**  
 Pauline, SC  
 15 miles south of Spartanburg, SC

<b>BLK/BWF</b> 100%	<b>#1</b> 90%	<b>FRAME:</b> Medium
<b>CH-X</b>	<b>#1<sup>1/2</sup></b> 10%	
<b>RED</b>	<b>#2</b>	
<b>RWF</b>	<b>FLESH:</b> Medium	
<b>Other</b>		



**Delivery Date:** August 12 - 16 **Shrink:** 2%  
**Notice to load:** 48 hours **Slide:** \$6/cwt topside only  
**Conditions:** Weighed on the ground on Certified Scales.  
**Nutrition:** 2-3# of Purina stocker feed a few times a week. Mainly grazing pasture with mineral and hay.  
**Vaccinations:** MLV + pasteurella (1x), Ultrabac 7 (2x)  
**Implants:** None **Dewormer:** Ivomec (2x)  
**Genetics:** Angus-X commercial.  
**Other:** Weaned 100+ days.



**Backgrounded, Weaned, Guaranteed Open, BQA Certified**

Heifers were bought as 4 weights from the Norwood area feeder calf sale. Prior to purchase they had one MLV with pasteurella and one clostridial. After purchase they were vaccinated again with Ultrabac 7 and dewormed. Carrying just a medium to light grass flesh. A very good set of heifers that would work very well on grass or on feed.

**Lot 9155 HEIFERS - 1 Load**

Price: \$ \_\_\_\_\_ Buyer # \_\_\_\_\_

**Base Weight:** 675 lbs. **Wt Stop:** 705 lbs. **Variance:** 150 lbs.  
**Contractor:** Marcus Harward • 704-322-0840

**Hannah Cattle Company - Matt Hannah**  
 Mocksville, NC  
 25 miles northeast of Statesville, NC

<b>BLK/BWF</b>	90%	<b>#1</b>	90%	<b>FRAME:</b> Medium
<b>CH-X</b>	7%	<b>#1<sup>1/2</sup></b>	10%	
<b>RED</b>	3%	<b>#2</b>		<b>FLESH:</b> Medium
<b>RWF</b>				
<b>Other</b>				



**Delivery Date:** September 23 - 27 **Shrink:** 2%  
**Notice to load:** 48 hours **Slide:** \$6/cwt topside only  
**Conditions:** Hauled 10 miles, weighed on the truck  
**Nutrition:** 8-10# of a high-fiber commodity feed with access to mineral, hay, and pasture.  
**Vaccinations:** Vista Once (1x), Vista 5 (1x), Cavalry 9 (2x)  
**Implants:** None **Dewormer:** Safeguard (1x), Cydectin Inject. (1x)  
**Genetics:** Angus-X commercial.  
**Other:** Weaned 60+ days. Bunk broke, broke to waters.



**Backgrounded, Weaned, Guaranteed Open, BQA Certified**

A very good set of backgrounded, reputational heifers. They were brought in as 5-weights and have mainly been grazing grass with a little feed. They have been double vaccinated under a very good health program. They have been palpated by Rocky Creek Vets, guaranteed open. A good load of backgrounded heifers ready to go to feed. There are 85 head to sort a load out of.

**Lot 9156 HEIFERS - 1 Load**

Price: \$ \_\_\_\_\_ Buyer # \_\_\_\_\_

**Base Weight:** 675 lbs. **Wt Stop:** 725 lbs. **Variance:** 150 lbs.  
**Contractor:** David Landreth • 864-444-8214

**Bowman Farms - William Bowman**  
 Iva, SC  
 45 miles southwest of Greenville, SC

<b>BLK/BWF</b>	50%	<b>#1</b>	95%	<b>FRAME:</b> Medium
<b>CH-X</b>	35%	<b>#1<sup>1/2</sup></b>	5%	
<b>RED</b>	15%	<b>#2</b>		<b>FLESH:</b> Medium
<b>RWF</b>				
<b>Other</b>				



**Delivery Date:** November 4 - 8 **Shrink:** 2%  
**Notice to load:** 48 hours **Slide:** \$6/cwt topside only  
**Conditions:** 15 miles, weighed on the truck on Certified Scales.  
**Nutrition:** 10-12# per day of 13% TMR feed with free choice mineral, pasture, and hay.  
**Vaccinations:** Vira Shield 6 VL5 HB (1x), Vista Once (1x), Cavalry 9 (2x)  
**Implants:** None **Dewormer:** Eprinex (1x), Safeguard (1x)  
**Genetics:** 50%+ Angus. Sired by Angus, Charolais, or Red Angus bulls.  
**Other:** Weaned 45+ days. Bunk broke.



**Home-Raised, All-Natural, Backgrounded, Weaned, Guaranteed Open, BQA Certified, GAP Certified.**

A fancy set of home-raised, all-natural heifers. They are Angus or Red Angus based with a few sired by Charolais bulls that were only bred to black cows. Genetics include Yon, Bricton Angus, and Clemson bulls. 5% of the calves will have a touch of ear. They will be weaned 45+ days at delivery. *GAP-4 Certified through Pineland Farms.*

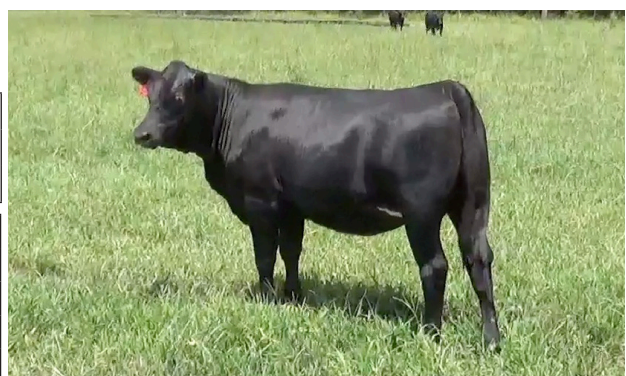
**Lot 9157 HEIFERS - 1 Load (70 head)**

Price: \$ \_\_\_\_\_ Buyer # \_\_\_\_\_

**Base Weight:** 680 lbs. **Wt Stop:** 715 lbs. **Variance:** 125 lbs.  
**Contractor:** Marcus Harward • 704-322-0840

**Richardson & Williams Farm (R&W Farm)**  
 Brittons Neck, SC  
 40 miles east of Florence, SC off Hwy 908

<b>BLK/BWF</b> 95%	<b>#1</b> 95%	<b>FRAME:</b> Medium
<b>CH-X</b> 5%	<b>#1<sup>1/2</sup></b> 5%	
<b>RED</b>	<b>#2</b>	<b>FLESH:</b> Medium
<b>RWF</b>		
<b>Other</b>		



**Delivery Date:** August 29 - 30 **Shrink:** 2%  
**Notice to load:** 48 hours **Slide:** \$6/cwt topside only  
**Conditions:** 5 miles weighed on the truck on Certified Scales.  
**Nutrition:** 8# per day of commodity blend feed with free choice mineral, pasture, and hay.  
**Vaccinations:** CattleMaster Gold FP 5 (1x), Bovi-Shield Gold 5 (1x), One Shot Ultra (1x), Ultrabac 7 (1x)  
**Implants:** None **Dewormer:** Valbazen drench, Eprinex Pour-On  
**Genetics:** 50-75% Angus. Sired by Angus and SimAngus bulls.  
**Other:** Weaned 60+ days. Bunk broke.



**Home-Raised, All-Natural, Backgrounded, Weaned, BQA Certified, GAP Certified.**

A fancy load of home-raised, thick-muscled predominantly black heifers that have been very well managed. They are double vaccinated, weaned, and are docile. Calves are sired by top Angus and SimAngus bulls. They qualify as all-natural and have a GAP certificate that can transfer with the cattle.



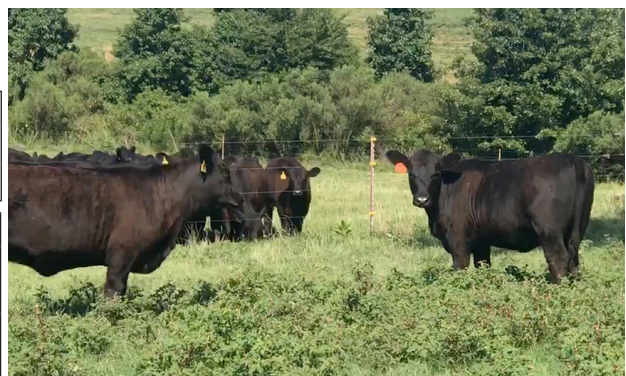
**Lot 9158 HEIFERS - 1 Load**

Price: \$ \_\_\_\_\_ Buyer # \_\_\_\_\_

**Base Weight:** 685 lbs. **Wt Stop:** 705 lbs. **Variance:** 150 lbs.  
**Contractor:** David Landreth • 864-444-8214

**Hy-Hope Farms - Doug Heydt**  
 Newberry, SC  
 40 miles northwest of Columbia, SC

<b>BLK/BWF</b> 92%	<b>#1</b> 95%	<b>FRAME:</b> Medium
<b>CH-X</b> 5%	<b>#1<sup>1/2</sup></b> 5%	
<b>RED</b>	<b>#2</b>	<b>FLESH:</b> Medium
<b>RWF</b> 3%		
<b>Other</b>		



**Delivery Date:** August 12 - 16 **Shrink:** 2%  
**Notice to load:** 48 hours **Slide:** \$6/cwt topside only  
**Conditions:** Weighed on the farm on Certified Scales.  
**Nutrition:** 6# per day of 13% CPC feed with free choice mineral, pasture, and hay.  
**Vaccinations:** Vista 5 (1x), Vista Once (1x), Vision 7 w/somnus (2x)  
**Implants:** None **Dewormer:** LongRange (1x), Ivomec Pour-On (2x)  
**Genetics:** +75% Angus. Angus-based cows (a couple Char-x), sired by Angus bulls from Black Grove Angus.  
**Other:** Weaned 60+ days. Bunk broke.



**Home-Raised, All-Natural, Backgrounded, Weaned, Guaranteed Open, BQA Certified, GAP Certified.**

A fancy load of home-raised, all-natural heifers. Calves are bunk broke, very docile, and will be weaned 60+ days at delivery. They are sired by Angus bulls and are high percentage Angus. Calves qualify as all-natural and will be GAP Certified. An excellent load of heifers.



**Lot 9159 HEIFERS - 40 Head, partial load**

Price: \$ \_\_\_\_\_ Buyer # \_\_\_\_\_

**Base Weight:** 700 lbs. **Wt Stop:** 725 lbs. **Variance:** 150 lbs.  
**Contractor:** Bruce Shankle • 704-694-8686

**D.A. Hill Farms - David Hill**  
 Ansonville, NC  
 35 miles east of Charlotte, NC

<b>BLK/BWF</b>	39 hd	<b>#1</b>	100%	<b>FRAME:</b> Medium
<b>CH-X</b>		<b>#1<sup>1/2</sup></b>		
<b>RED</b>	1 hd	<b>#2</b>		<b>FLESH:</b> Medium
<b>RWF</b>				
<b>Other</b>				



**Delivery Date:** August 8 - 16 **Shrink:** 2%  
**Notice to load:** 24 - 48 hours **Slide:** \$5/cwt topside only

**Conditions:** Weighed on the ground on Certified Scales.

**Nutrition:** 14% TMR. Free choice mineral, pasture, and alfalfa hay.

**Vaccinations:** Vista 5 SQ (1x), Vista Once (1x), Vision 7 (1x), Vision 7 w/ somnus (1x)

**Implants:** None **Dewormer:** Dectomax

**Genetics:** Sired by Angus and Hereford bulls out of black Angus-x-Continental cows.

**Other:** Weaned 60+ days.



**Home-Raised, Backgrounded, Weaned, Guaranteed Open, BQA Certified.**

A very good half load of home-raised, backgrounded heifers. These heifers are handfed daily and would make an excellent set of replacements. They are all Angus or Hereford sired and born in September or October 2018. They will be weaned for 60+ days at delivery and have been double vaccinated according to the NC BQA Sale program

**Lot 9160 HEIFERS - 1 Load**

Price: \$ \_\_\_\_\_ Buyer # \_\_\_\_\_

**Base Weight:** 750 lbs. **Wt Stop:** 800 lbs. **Variance:** 150 lbs.  
**Contractor:** David Landreth • 864-444-8214

**Bowman Farms - William Bowman**  
 Iva, SC  
 45 miles southwest of Greenville, SC

<b>BLK/BWF</b>	50%	<b>#1</b>	95%	<b>FRAME:</b> Medium
<b>CH-X</b>	35%	<b>#1<sup>1/2</sup></b>	5%	
<b>RED</b>	15%	<b>#2</b>		<b>FLESH:</b> Medium
<b>RWF</b>				
<b>Other</b>				



**Delivery Date:** November 4 - 8 **Shrink:** 2%  
**Notice to load:** 48 hours **Slide:** \$5/cwt topside only

**Conditions:** 15 miles, weighed on the truck on Certified Scales.

**Nutrition:** 10-12# per day of 13% TMR feed with free choice mineral, pasture, and hay.

**Vaccinations:** Vira Shield 6 VL5 HB (1x), Vista Once (1x), Cavalry 9 (2x)

**Implants:** None **Dewormer:** Eprinex (1x), Safeguard (1x)

**Genetics:** 50%+ Angus. Sired by Angus, Charolais, or Red Angus bulls.

**Other:** Weaned 45+ days. Bunk broke.



**Home-Raised, All-Natural, Backgrounded, Weaned, Guaranteed Open, BQA Certified, GAP Certified.**

A fancy set of home-raised, all-natural heifers. They are Angus or Red Angus based with a few sired by Charolais bulls that were only bred to black cows. Genetics include Yon, Bricton Angus, and Clemson bulls. 5% of the calves will have a touch of ear. They will be weaned 45+ days at delivery. *GAP-4 Certified through Pineland Farms.*

**Lot 9161 STEERS & HEIFERS - 1 Partial Load** Price: \$ \_\_\_\_\_ Buyer # \_\_\_\_\_

24 Strs - Wt: 550 lbs. Wt Stop: 575 lbs. Variance: 150 lbs.  
 33 Hfrs - Wt: 500 lbs. Wt Stop: 525 lbs. Variance: 150 lbs.  
 Contractor: Marcus Harward • 704-322-0840

**Sheek Farms - Harold Sheek**  
 Advance, NC  
 15 miles southwest of Winston-Salem, NC

BLK/BWF 100%	#1 95%	FRAME: Medium	
CH-X	#1 <sup>1/2</sup> 5%		
RED	#2		
RWF			FLESH: Medium
Other			



Heifers sell \$.12 back.

**Delivery Date:** August 13 - 16 **Shrink:** None  
**Notice to load:** 48 hours **Slide:** \$8/cwt topside only  
**Conditions:** 35 miles, weighed on the ground on Cert. Scales  
**Nutrition:** 8# per day of commodity feed with free choice mineral, pasture, and hay.  
**Vaccinations:** Vira-Shield 6 + somnus (2x), Alpha 7 w/MB-1 (1x), Pink eye (1x)  
**Implants:** None **Dewormer:** Safeguard (1x), Eprinex (1x)  
**Genetics:** 80-90% Angus, sired by Angus bulls out of Angus or SimAngus cows.  
**Other:** Weaned 60+ days.



**Home-Raised, All-Natural, Backgrounded, Weaned, BQA Certified.**

A fancy group of 5-weight calves. They are predominantly Angus with the bloodlines of Profit, New Day 454, and Impression. Calves will carry 1/4 Simmental or less. Calves will be hauled 35 miles to Harward Brothers Livestock Market and weighed on the ground with no shrink. This will be a partial load at about 30,000 lbs.

**Lot 9162 STEERS & HEIFERS - 1 Load** Price: \$ \_\_\_\_\_ Buyer # \_\_\_\_\_

20 Strs - Wt: 600 lbs. Wt Stop: 625 lbs. Variance: 150 lbs.  
 53 Hfrs - Wt: 700 lbs. Wt Stop: 725 lbs. Variance: 150 lbs.  
 Contractor: David Landreth • 864-444-8214

**Son Rise Plantation - Alton Johnson**  
 Warrenton, GA  
 45 miles west of Augusta, GA

BLK/BWF 96%	#1 95%	FRAME: Medium	
CH-X 3 hd	#1 <sup>1/2</sup> 5%		
RED	#2		
RWF			FLESH: Medium
Other			



Heifers sell \$.12 back.

**Delivery Date:** August 19 - 23 **Shrink:** 2%  
**Notice to load:** 48 hours **Slide:** \$6/cwt topside only  
**Conditions:** Weighed on the ground on Certified Scales.  
**Nutrition:** 9# of 14% TMR - gluten, soyhulls, cracked corn with free choice mineral, pasture, and hay.  
**Vaccinations:** Pyramid 10 (2x), Pyramid 5 w/ presponse (1x), Once PMH (1x), Vision 7 w/ somnus (2x)  
**Implants:** None **Dewormer:** Dectomax Inject (1x)  
**Genetics:** Predominantly Angus. Angus-based cows (a couple Char-x), sired by Angus bulls.  
**Other:** Weaned 60+ days. Bunk broke.



**Home-Raised, All-Natural, Backgrounded, Weaned, Heifers Guaranteed Open, BQA Certified, GAP Certified.**

A fancy load of home-raised, all-natural calves that are very docile. Calves are weaned 60+ days at time of delivery and have been double vaccinated. Calves are bunk broke, getting hand fed. Calves qualify as all-natural and will be GAP Certified that can transfer to buyer. The load is predominantly heifers with about 20 steers to make it a full load.

**Lot 9163 STEERS & HEIFERS - 1 Load**

Price: \$ \_\_\_\_\_ Buyer # \_\_\_\_\_

**Strs - Wt:** 650 lbs. **Wt Stop:** 680 lbs. **Variance:** 150 lbs.  
**Hfrs - Wt:** 625 lbs. **Wt Stop:** 655 lbs. **Variance:** 150 lbs.  
**Contractor:** Marcus Harward • 704-322-0840

**Calhoun Farms - Davis Calhoun**  
 Clio, SC  
 40 miles northwest of Florence, SC

<b>BLK/BWF</b>	55%	<b>#1</b>	95%	<b>FRAME:</b> Medium
<b>CH-X</b>	5%	<b>#1<sup>1/2</sup></b>	5%	
<b>RED</b>	40%	<b>#2</b>		<b>FLESH:</b> Medium
<b>RWF</b>				
<b>Other</b>				



Heifers sell \$.08 back.

**Delivery Date:** September 16 - 20 **Shrink:** 2%  
**Notice to load:** 48 hours **Slide:** \$5/cwt topside only  
**Conditions:** 10 miles, weighed on the truck on Certified Scales.  
**Nutrition:** 10# per day of TMR with free choice mineral, pasture, and hay.  
**Vaccinations:** Pyramid 5 + Presponse (1x), Triangle 10 (1x), Vision 7 (2x)  
**Implants:** None **Dewormer:** Cydectin (1x), Ivermectin (1x)  
**Genetics:** Angus, SimAngus, and Red Angus. Sires are from Cooper Angus and Bull Hill Ranch Red Angus.  
**Other:** Weaned 90 days. Bunk broke. Would like to load split load after steer load (lot 9140)



AllNATURAL



**Home-Raised, All-Natural, Backgrounded, Weaned, Heifers Guaranteed Open, BQA Certified, GAP Certified.**

A very good load of steers and heifers that are home-raised, all-natural, and will be weaned for 90 days at time of delivery. These are reputation cattle sold on truckloads for many years. Cattle are at least half Angus and out of crossbred cows. A very good set of calves. *GAP-4 Certified through Pineland Farms.*

**Lot 9164 STEERS & HEIFERS - 1 Load**

Price: \$ \_\_\_\_\_ Buyer # \_\_\_\_\_

**34 Strs - Wt:** 720 lbs. **Wt Stop:** 745 lbs. **Variance:** 150 lbs.  
**36 Hfrs - Wt:** 690 lbs. **Wt Stop:** 715 lbs. **Variance:** 150 lbs.  
**Contractor:** Marcus Harward • 704-322-0840

**William Brigman Farms - William Brigman**  
 Latta, SC  
 15 miles northwest of Florence, SC

<b>BLK/BWF</b>	68 hd	<b>#1</b>	95%	<b>FRAME:</b> Medium
<b>CH-X</b>	2 hd	<b>#1<sup>1/2</sup></b>	5%	
<b>RED</b>		<b>#2</b>		<b>FLESH:</b> Medium
<b>RWF</b>				
<b>Other</b>				



Heifers sell \$.06 back.

**Delivery Date:** August 19 - 21 **Shrink:** 2%  
**Notice to load:** 48 hours **Slide:** \$5/cwt topside only  
**Conditions:** 2 miles, weighed on the truck on Certified Scales.  
**Nutrition:** 5-7# per day of 14% commodity blend with free choice mineral, pasture, and hay.  
**Vaccinations:** Bovi-Shield Gold One Shot (1x), CattleMaster Gold FP 5 (1x), One Shot Ultra (1x), Ultrabac 7 (1x)  
**Implants:** None **Dewormer:** Dectomax Pour-On (2x)  
**Genetics:** 50-75% Angus. Angus and SimAngus sired by Yon Family Farms bulls.  
**Other:** Weaned 45+ days. Bunk broke.



AllNATURAL



**Home-Raised, All-Natural, Backgrounded, Weaned, Heifers Guaranteed Open, BQA Certified.**

An outstanding set of all-natural, Angus-based calves. They are very docile and are thick-muscled. They are 45+ days weaned. They have been very well managed and have complete records. 90% of the calves were all born in a 60 day window. These calves can be fed anywhere. An excellent set of all-natural calves ready to go to feed.

*Cattle that are picked up after the stated delivery dates will be subject to a 3# per day increase on the base weight and any weight stops for each day late after the last stated delivery date.* Page -23-

**Lot 9165 STEERS & HEIFERS - 1 Load**

Price: \$ \_\_\_\_\_ Buyer # \_\_\_\_\_

52 Strs - Wt: 740 lbs. Wt Stop: 775 lbs. Variance: 125 lbs.  
 14 Hfrs - Wt: 685 lbs. Wt Stop: 720 lbs. Variance: 125 lbs.  
 Contractor: Marcus Harward • 704-322-0840



Heifers sell \$.06 back.

**Richardson & Williams Farm (R&W Farm)**

Brittons Neck, SC  
 40 miles east of Florence, SC off Hwy 908

BLK/BWF	95%	#1	95%	FRAME: Medium
CH-X	5%	#1 <sup>1/2</sup>	5%	
RED		#2		FLESH: Medium
RWF				
Other				

**Delivery Date:** August 27 - 28 **Shrink:** 2%  
**Notice to load:** 48 hours **Slide:** \$5/cwt topside only  
**Conditions:** 5 miles weighed on the truck on Certified Scales.  
**Nutrition:** 8# per day of commodity blend feed with free choice mineral, pasture, and hay.  
**Vaccinations:** CattleMaster Gold FP 5 (1x), Bovi-Shield Gold 5 (1x), One Shot Ultra (1x), Ultrabac 7 (1x)  
**Implants:** None **Dewormer:** Valbazen drench, Eprinex Pour-On  
**Genetics:** 50-75% Angus. Sired by Angus and SimAngus bulls.  
**Other:** Weaned 60+ days. Bunk broke.



AllNATURAL



SelectVAC

**Home-Raised, All-Natural, Backgrounded, Weaned, BQA Certified, GAP Certified.**

A fancy load of home-raised, thick-muscled predominantly black heifers and steers that have been very well managed. They are double vaccinated, weaned, and are docile. Calves are sired by top Angus and SimAngus bulls. Predominantly steers with just a few heifers to finish. They have a GAP certificate that can transfer with the cattle.

global animal PARTNERSHIP

**Lot 9166 STEERS & HEIFERS - 1 Load**

Price: \$ \_\_\_\_\_ Buyer # \_\_\_\_\_

55 Strs - Wt: 750 lbs. Wt Stop: 775 lbs. Variance: 150 lbs.  
 15 Hfrs - Wt: 675 lbs. Wt Stop: 700 lbs. Variance: 150 lbs.  
 Contractor: David Landreth • 864-444-8214



Heifers sell \$.06 back.

**Kesler Brothers - Fred & Ned Kesler**

Newberry, SC  
 30 miles south of Greenville, SC

BLK/BWF	100%	#1	95%	FRAME: Medium
CH-X		#1 <sup>1/2</sup>	5%	
RED		#2		FLESH: Medium
RWF				
Other				

**Delivery Date:** August 12 - 16 **Shrink:** 2%  
**Notice to load:** 48 hours **Slide:** \$5/cwt topside only  
**Conditions:** Weighed on the ground on Certified Scales.  
**Nutrition:** 6# per head per day of 14% all-natural commodity pellet with free choice mineral, hay, and grass.  
**Vaccinations:** Vista Once SQ (1x), CattleMaster 4 VL5 (1x), Vision 7 w/somnus (2x)  
**Implants:** None **Dewormer:** Ivomec Pour-On (2x)  
**Genetics:** Sired by Angus, Brangus, and Gelbvieh bulls. Out of Angus, Ultrablack, and Brangus cows.  
**Other:** Weaned 45+ days. Bunk broke.



AllNATURAL



global animal PARTNERSHIP

**Home-Raised, All-Natural, Backgrounded, Weaned, Heifers Guaranteed Open, BQA Certified, GAP Certified.**

A very good load that are home-raised, all-natural, and backgrounded. Calves are out of Ultrablack and Brangus based cows, mainly sired by registered, purebred Angus bulls with a few sired by Gelbvieh or Brangus influenced bulls. Calves will carry 1/8 ear or less. Predominantly steers with just a few heifers to finish. GAP-4 Certified through Pineland Farms.