



MID-ATLANTIC CATTLE SALES

*A family owned and operated livestock video auction
with 30+ years of livestock marketing experience.*

AUGUST 6, 2024

TUESDAY AT 1:00 PM EDT

WWW.MACSVIDEO.COM



Mid-Atlantic Cattle Sales, LLC
28978 Misenheimer Rd. Richfield, NC 28137
704-322-0840 • 704-322-9770
info@macsvideo.com

DVAuction
Broadcasting Real-Time Auctions

Video Sale INFORMATION

The cattle offered for sale are indicated on the following sale sheets and the online sale description as described to the MACS representatives by the owner. They are described by lot numbers, seller, location of cattle, numbers of head, estimated weight, management practices, delivery date, conditions of sale and delivery, and verified programs. Representatives for each load are listed under each respective lot. Every effort has been made to assure the correctness of this information but all announcements from the auctioneer or official auction staff prior to or during the sale shall take precedence over printed matter herein.

SALE DATE & TIME:

Tuesday - August 6, 2024

1:00 pm edt. | 12:00 pm cdt.

CONTACT:

Marcus Harward704-322-0840

Brooke Harward704-322-9770

www.MACSvideo.com

View catalog, videos, and additional updates online.

www.vimeo.com/macsvideo

All videos of sale cattle are posted directly on our video page listed above and on DV Auction

***MACS Sale Terms and Conditions are listed in this catalog and online. All loads will sell under these terms and conditions.**

Bidding Options

We want to offer you the best opportunities we can to participate in our sales each month.
Below are three options for bidding on the sale.

1. CONFERENCE CALL

After 12:45 eastern on sale day, you can call the auction number to listen and bid on the sale. To bid during the sale, you will use your buyer number to bid on the lot. Contact Marcus or Brooke prior to the sale to receive a buyer's number. *Please keep background noise to a minimum as we will have multiple people on the line. To mute your phone, press *1. To un-mute, press *1 again.*

CALL-IN NUMBER: 1-866-906-9888

PASSCODE: 9461720 #



2. DV AUCTION - INTERNET VIEWING AND BIDDING

To view the sale or bid online, visit www.DVAuction.com. Find the "Mid-Atlantic Cattle Sales (Richfield, NC)" sale and click on "Details." From this page you can view the catalog, videos, or log in to watch the sale. If you have an account, log in and view the sale. If you do not, you must create an account under the "Create New Account" tab in the upper left hand corner of the screen. You will need to confirm this account through your e-mail. *It is best to do this at least a day before the sale.*

You DO NOT have to be approved just to watch the sale but you will still need to create an account with DVAuction. To register for a buyer's number, call Brooke at 704-322-9770 prior to the sale to be approved to bid online.

3. ABSENTEE BIDDING

For people who can not view or bid on the sale at sale time, we have can handle closed bids in house and assist you with absentee bidding. Contact Marcus at 704-322-0840 for more information.

*"Keep me safe, my God, for in you I take refuge. I say to the Lord,
You are my Lord; apart from you I have no good thing."*

PSALM 16:1-2



LOT SUMMARY

TUESDAY, AUGUST 6, 2024

Video Sale Information

Pg 2

Table of Contents / Lot Summary

Pg 3-4

LOT NUMBER	LOAD NUMBER	TYPE	BASE WT.	PRODUCER	STATE	DELIVERY	PAGE NUMBER
Lot 4220	0.4 Load	Steers	525 lbs.	TRF Farms *GAP VNB NHTC	NC	August 16	Pg 5
Lot 4221	0.7 Load	Steers	540 lbs.	Allen Farms *GAP	NC	August 12-16	Pg 5
Lot 4222	1 Load	Steers	615 lbs.	TRF Farms *GAP VNB NHTC	NC	August 14	Pg 6
Lot 4223	1 Load	Steers	685 lbs.	TRF Farms *GAP VNB NHTC	NC	August 14	Pg 6
Lot 4224	1 Load	Steers	660 lbs.	M & M Farms *GAP VNB NHTC	NC	August 12-15	Pg 7
Lot 4225	1 Load	Steers	685 lbs.	Allen Farms *GAP	NC	August 12-16	Pg 7
Lot 4226	1 Load	Steers	700 lbs.	Mitchell Farms *GAP VNB NHTC CARE	SC	August 12-16	Pg 8
Lot 4227	1 Load	Steers	735 lbs.	Piney Woods Farm *GAP VNB NHTC	NC	Septem. 2-6	Pg 8
Lot 4228	1 Load	Steers	745 lbs.	TRF Farms *GAP VNB NHTC	NC	August 13	Pg 9
Lot 4229	0.9 Load*	Steers	750 lbs.	Rushton Farms *GAP VNB NHTC CARE	SC	August 12-16	Pg 9
Lot 4230	1 Load	Steers	775 lbs.	M & M Farms *GAP VNB NHTC	NC	August 12-15	Pg 10
Lot 4231	2 Loads	Steers	740 lbs.	Scotton Farms	NC	August 12-16	Pg 10
Lot 4232	1 Load	Steers	775 lbs.	Hannah Cattle Company	NC	Septem. 9-13	Pg 11
Lot 4233	0.9 Load*	Steers	790 lbs.	Buzhardt 5 Farms *GAP VNB NHTC CARE	SC	August 12-16	Pg 11
Lot 4234	1 Load	Steers	810 lbs.	TRF Farms *GAP VNB NHTC	NC	August 13	Pg 12
Lot 4235	2 Loads	Steers	810 lbs.	R. Gerald Warren Farms *GAP	NC	Septem. 16-20	Pg 12
Lot 4236	0.9 Load*	Steers	825 lbs.	Greene Brothers Farm *GAP VNB NHTC CARE	SC	August 12-16	Pg 13
Lot 4237	1 Load	Steers	825 lbs.	Falling Creek Cattle Co	NC	August 12-16	Pg 13
Lot 4238	1 Load	Steers	835 lbs.	Wester Farms	NC	August 12-16	Pg 14
Lot 4239	1 Load	Heifers	545 lbs.	TRF Farms *GAP VNB NHTC	NC	August 16	Pg 14
Lot 4240	1 Load	Heifers	625 lbs.	TRF Farms *GAP VNB NHTC	NC	August 15	Pg 15
Lot 4241	1 Load	Heifers	695 lbs.	TRF Farms *GAP VNB NHTC	NC	August 15	Pg 15
Lot 4242	1 Load	Heifers	625 lbs.	Dixon Family & Holt Farms	NC	August 12-16	Pg 16
Lot 4243	1 Load	Heifers	710 lbs.	M & M Farms *GAP VNB NHTC	NC	August 12-15	Pg 16
Lot 4244	1 Load	Heifers	750 lbs.	Donald Chriscoe Farm *	NC	August 8-16	Pg 17

* = Affidavit Natural GAP= GAP Certified VNB= Verified Natural
 NHTC= Non-Hormone Treated CARE= BeefCARE Certified



LOT SUMMARY

TUESDAY, AUGUST 6, 2024

LOT NUMBER	LOAD NUMBER	TYPE	BASE WT.	PRODUCER	STATE	DELIVERY	PAGE NUMBER
Lot 4245	0.6 Load	Steers Heifers	540 lbs. 560 lbs.	M & M Farms *GAP VNB NHTC	NC	August 16-17	Pg 18
Lot 4246	0.6 Load	Steers Heifers	600 lbs. 590 lbs.	Catawba Cattlemen Alliance *VNB NHTC	NC	August 17-20	Pg 18
Lot 4247	1 Load	Steers Heifers	600 lbs. 625 lbs.	Rockingham Cattlemen Alliance *	NC	August 12-20	Pg 19
Lot 4248	0.8 Load	Steers Heifers	640 lbs. 625 lbs.	M-P Cattle Co	NC	August 7-20	Pg 19
Lot 4249	1 Load	Steers Heifers	675 lbs. 625 lbs.	S & K Farms *GAP VNB NHTC CARE	SC	August 19-23	Pg 20
Lot 4250	1 Load	Steers Heifers	695 lbs. 650 lbs.	David Edwards *GAP	NC	August 12-16	Pg 20
Lot 4251	0.9 Load	Steers Heifers	700 lbs. 615 lbs.	Shealy Farms *GAP	SC	August 12-16	Pg 21
Lot 4252	1 Load	Steers Heifers	730 lbs. 685 lbs.	Westlake Farms *GAP VNB NHTC CARE	SC	August 12-16	Pg 22
Lot 4253	0.9 Load	Steers Heifers	760 lbs. 705 lbs.	Saluda High Point Farms *GAP VNB NHTC	SC	August 12-16	Pg 22
Lot 4254	0.8 Load	Steers Heifers	715 lbs. 650 lbs.	Autumn Horizons (Not weaned)	NC	August 10-17	Pg 21
Lot 4255	1 Load	Steers Heifers	780 lbs. 720 lbs.	Catawba Cattlemen Alliance *VNB NHTC	NC	August 12-16	Pg 23
Lot 4256	1 Load	Steers Heifers	750 lbs. 725 lbs.	Catawba Cattlemen Alliance *VNB NHTC	NC	August 12-16	Pg 23
Lot 4257	1 Load	Steers Heifers	760 lbs. 760 lbs.	Rockingham Cattlemen Alliance *	NC	August 12-20	Pg 24
Lot 4258	1 Load	Steers Heifers	790 lbs. 750 lbs.	Wes Knight Farms *GAP VNB NHTC CARE	SC	August 19-23	Pg 24
Lot 4259	0.9 Load	Steers Heifers	800 lbs. 750 lbs.	Hall Farm *GAP VNB NHTC	SC	August 19-23	Pg 25
Lot 4260	1 Load	Steers Heifers	875 lbs. 850 lbs.	Chriscoe & Summers Farms *	NC	August 12-16	Pg 25
Lot 4261	0.6 Load	Steers Heifers	675 lbs. 575 lbs.	Colon Roberts Farm * *Wagyu cattle*	NC	August 9-20	Pg 26

Upcoming Video Sale Dates	Pg 27
Graded Feeder Calf Sale - August 8, 2024	Pg 28
DV Auction Online Bidding	Pg 29
MACS Sale Terms & Conditions	Pg 30-31

* = Affidavit Natural GAP= GAP Certified VNB= Verified Natural
 NHTC= Non-Hormone Treated CARE= BeefCARE Certified

Lot 4220 0.45 Load of STEERS

Price: \$ _____ Buyer # _____

TRF Farms
Lawndale, NC - 20 miles north of Shelby, NC

Home-Raised, GAP-4, Verified Natural, Backgrounded, Weaned, BQA Certified

Base Weight: 525 lbs. Wt. Stop: 560 lbs. Variance: 90 lbs.

Pickup Date: August 16 **Estimated Head Count** 40
Slide/Shrink: 2% shrink and slide \$15/cwt topside only
Weigh: Hauled 15 miles, sorted, weighed on certified ground scales
Notice to load: 48 hours **Weaned:** 60+ days
Colors: 33 hd blk/bwf, 2 hd rwf, 5 hd ch-x
Muscling: 95% #1, 5% #1.5
Nutrition: Hand fed CPC developer feed with free choice mineral, pasture, and hay.
Vaccinations: Vista Once SQ (1x), Vista 5 (1x), Vision 7 (2x)
Dewormer: Dectomax Inj, Safeguard **Implants:** None
Genetics: ****NeoGen Elite genetics**** Predominantly Angus-based. Sired by breed-leading Angus, Hereford, Charolais, or SimAngus bulls. Hereford bulls are top 1-2% for CHBS (Marb, REA, etc). Charolais bulls are top 2% Marbling. *RWF are rednecked type cattle and no pink-nosed chars on the load.
Programs: GAP-4; BeefTraxx Verified Natural; NHTC; Source & Age; Seller Affidavit
Comments: Broke to bunks and waters. A reputational set of calves born last fall and under very good management protocols for health, feed, and genetics. Calves are all 840 EID tagged and verified natural. GAP-4 certificate can transfer at no cost to the buyer (GAP#21186, Exp 11/28/24). TRF Farms is a partnership of Thompson & Son, Royster Turkey Farm, & Fieldstone Farm. ****Calf crop DNA tested through NeoGen, ranking as Elite in the Igenity Terminal Index, ranking in the top 25% of all Igenity tested cattle. A partial load of 40 head at approximately 21,000 lbs.**
MACS Rep: Marcus Harward, 704-322-0840



Flesh: Medium
Frame: Medium



Lot 4221 0.7 Load of STEERS

Price: \$ _____ Buyer # _____

Allen Farms (Scotty Allen)
Polkton, NC - 12 mi. south of Norwood, NC; 25 mi east of Charlotte, NC

Home-Raised, GAP-4, Natural, Backgrounded, Weaned, BQA Certified

Base Weight: 540 lbs. Wt. Stop: 575 lbs. Variance: 100 lbs.

Pickup Date: August 12-16 **Estimated Head Count** 62
Slide/Shrink: 2% shrink and slide \$15/cwt topside only
Weigh: Certified MACS ground scales at farm
Notice to load: 48 hours **Weaned:** 60+ days
Colors: 61 hd blk/bwf, 1 hd ch-x
Muscling: 85% #1, 15% #1.5
Nutrition: 15% complete feed on a self feeder, grazing pasture with free choice minerals and hay
Vaccinations: Vista Once (1x), Vista 5 (1x), Vision 7 somnus (1x), Vision 7 (1x), Endovac (1x)
Dewormer: Ivermec, Safeguard **Implants:** None
Genetics: 75% or more Angus. All sired by high-performing registered Angus bulls and out of commercial Angus cows. Angus bulls qualify for CAB Targeting the Brand with both high carcass and growth traits.
Programs: GAP-4; Seller Affidavit
Comments: Broke to bunks and waters. The younger calves, born November-December 2023 with complete records including birthdates, sire, and dam info. A fancy set of high-quality, high-performing genetics from a reputational program. The last two years the calves were DNA tested through NeoGen and ranked high as Igenity Terminal Elite (top 25% for carcass and growth). GAP-4 certificate can transfer at no cost to buyer (GAP#120953, Exp 10/12/24). **A partial load at about 33,000 lbs.**
MACS Rep: Bruce Shankle, 704-694-8686



Flesh: 70% Medium, 30% Med/Minus
Frame: Medium



Cattle that are picked up after the stated delivery dates will be subject to a 2# per day increase on the base weight and any weight stops for each day late after the last stated delivery date.

Lot 4222 1 Load of STEERS

Price: \$ _____ Buyer # _____

TRF Farms

Lawndale, NC - 20 miles north of Shelby, NC

Home-Raised, GAP-4, Verified Natural, Backgrounded, Weaned, BQA Certified

Base Weight: 615 lbs. **Wt. Stop:** 650 lbs. **Variance:** 90 lbs.

Pickup Date: August 14 **Estimated Head Count** 79
Slide/Shrink: 2% shrink and slide \$12/cwt topside only
Weigh: Hauled 15 miles, sorted, weighed on certified ground scales
Notice to load: 48 hours **Weaned:** 60+ days
Colors: 66 hd blk/bwf, 1 hd rwf, 12 hd ch-x
Muscling: 95% #1, 5% #1.5
Nutrition: Hand fed CPC developer feed with free choice mineral, pasture, and hay.
Vaccinations: Vista Once SQ (1x), Vista 5 (1x), Vision 7 (2x)
Dewormer: Dectomax Inj, Safeguard **Implants:** None
Genetics: ****NeoGen Elite genetics**** Predominantly Angus-based. Sired by breed-leading Angus, Hereford, Charolais, or SimAngus bulls. Hereford bulls are top 1-2% for CHBS (Marb, REA, etc). Charolais bulls are top 2% Marbling. About 10-20% of the load are AI-sired by Select Sires' bulls Yon County Road, Tehama Tahoe, or Wilks Regiment (Angus) or JMAR Lead Time (Charolais). *RWF are rednecked type cattle and no pink-nosed chars on the load.
Programs: GAP-4; BeefTraxx Verified Natural; NHTC; Source & Age; Seller Affidavit
Comments: Broke to bunks and waters. A reputational set of calves born last fall and under very good management protocols for health, feed, and genetics. Calves are all 840 EID tagged and verified natural. GAP-4 certificate can transfer at no cost to the buyer (GAP#21186, Exp 11/28/24). TRF Farms is a partnership of Thompson & Son, Royster Turkey Farm, & Fieldstone Farm. **Calf crop DNA tested through NeoGen, ranking as Elite in the Igenity Terminal Index, ranking in the top 25% of all Igenity tested cattle.
MACS Rep: Marcus Harward, 704-322-0840



Flesh: Medium
Frame: Medium

Programs:



Lot 4223 1 Load of STEERS

Price: \$ _____ Buyer # _____

TRF Farms

Lawndale, NC - 20 miles north of Shelby, NC

Home-Raised, GAP-4, Verified Natural, Backgrounded, Weaned, BQA Certified

Base Weight: 685 lbs. **Wt. Stop:** 720 lbs. **Variance:** 60 lbs.

Pickup Date: August 14 **Estimated Head Count** 71
Slide/Shrink: 2% shrink and slide \$12/cwt topside only
Weigh: Hauled 15 miles, sorted, weighed on certified ground scales
Notice to load: 48 hours **Weaned:** 60+ days
Colors: 65 hd blk/bwf, 1 hd rwf, 5 hd ch-x
Muscling: 95% #1, 5% #1.5
Nutrition: Hand fed CPC developer feed with free choice mineral, pasture, and hay.
Vaccinations: Vista Once SQ (1x), Vista 5 (1x), Vision 7 (2x)
Dewormer: Dectomax Inj, Safeguard **Implants:** None
Genetics: ****NeoGen Elite genetics**** Predominantly Angus-based. Sired by breed-leading Angus, Hereford, Charolais, or SimAngus bulls. Hereford bulls are top 1-2% for CHBS (Marb, REA, etc). Charolais bulls are top 2% Marbling. About 10-20% of the load are AI-sired by Select Sires' bulls Yon County Road, Tehama Tahoe, or Wilks Regiment (Angus) or JMAR Lead Time (Charolais). *RWF are rednecked type cattle and no pink-nosed chars on the load.
Programs: GAP-4; BeefTraxx Verified Natural; NHTC; Source & Age; Seller Affidavit
Comments: Broke to bunks and waters. A reputational set of calves born last fall and under very good management protocols for health, feed, and genetics. Calves are all 840 EID tagged and verified natural. GAP-4 certificate can transfer at no cost to the buyer (GAP#21186, Exp 11/28/24). TRF Farms is a partnership of Thompson & Son, Royster Turkey Farm, & Fieldstone Farm. **Calf crop DNA tested through NeoGen, ranking as Elite in the Igenity Terminal Index, ranking in the top 25% of all Igenity tested cattle.
MACS Rep: Marcus Harward, 704-322-0840



Flesh: Medium
Frame: Medium

Programs:



Cattle that are picked up after the stated delivery dates will be subject to a 2# per day increase on the base weight and any weight stops for each day late after the last stated delivery date.

Lot 4224 1 Load of STEERS

Price: \$ _____ Buyer # _____

M & M Farms
 Snow Camp, NC - 20 miles southeast of Greensboro, NC



Home-Raised, GAP-4, Verified Natural, NHTC, Backgrounded, Weaned

Base Weight: 660 lbs. Wt. Stop: 695 lbs. Variance: 150 lbs.

Pickup Date: August 12-15 **Estimated Head Count** 73

Slide/Shrink: 2% shrink and slide \$12/cwt topside only

Weigh: Weighed at Alamance cattlemen's barn on certified MACS ground scales

Notice to load: 48 hours **Weaned:** 60+ days

Colors: 75% blk/bwf, 25% ch-x or red

Flesh: Medium

Muscling: 95% #1, 5% #1.5

Frame: Medium

Nutrition: Bunk fed TMR of soyhulls and corn gluten with free choice mineral, pasture, and hay.

Vaccinations: Vista Once (1x), Vista 5 (1x), Vision 7 (2x)

Dewormer: Dectomax (2x) **Implants:** None

Genetics: 50% or more Angus. Sired by high-performing Angus, SimAngus, or Char-Angus bulls out of Angus-X and Char-X cows.

Programs: GAP-4; BeefTraxx Verified Natural; NHTC; Source & Age; Seller Affidavit

Comments: Broke to bunks and waters. A reputational set of fancy calves, all born last fall, double vaccinated, and natural. GAP-4 certificate can transfer at no cost to buyer (GAP#21197; Exp 11/19/24). Will be EID tagged for Verified Natural and NHTC 1 if needed, certified through BeefTraxx. Would like to load both M&M Farms steers the same day if possible.

MACS Rep: Marcus Harward, 704-322-0840

Programs:



Lot 4225 1 Load of STEERS

Price: \$ _____ Buyer # _____

Allen Farms (Scotty Allen)
 Polkton, NC - 12 mi. south of Norwood, NC; 25 mi east of Charlotte, NC



Home-Raised, GAP-4, Natural, Backgrounded, Weaned, BQA Certified

Base Weight: 685 lbs. Wt. Stop: 720 lbs. Variance: 200 lbs.

Pickup Date: August 9-16 **Estimated Head Count** 71

Slide/Shrink: 2% shrink and slide \$12/cwt topside only

Weigh: Certified MACS ground scales at farm

Notice to load: 48 hours **Weaned:** 60+ days

Colors: 100% blk/bwf

Flesh: Medium

Muscling: 95% #1, 5% #1.5

Frame: Medium

Nutrition: Bunk fed 10# of 15% complete feed, grazing pasture with free choice minerals and hay

Vaccinations: Vista Once (1x), Vista 5 (1x), Vision 7 somnus (1x), Vision 7 (1x), Endovac (1x)

Dewormer: Ivermec, Safeguard **Implants:** None

Genetics: 75% or more Angus. All sired by high-performing registered Angus bulls and out of commercial Angus cows. Angus bulls qualify for CAB Targeting the Brand with both high carcass and growth traits.

Programs: GAP-4; Seller Affidavit

Comments: Broke to bunks and waters. Born Oct.-Nov 2023. with complete records including birthdates, sire, and dam info. A fancy set of high-quality, high-performing genetics from a reputational program. The last two years the calves were DNA tested through NeoGen and ranked high as Igenity Terminal Elite (top 25% for carcass and growth). GAP-4 certificate can transfer at no cost to buyer (GAP#120953, Exp 10/12/24).

MACS Rep: Bruce Shankle, 704-694-8686

Programs:



Cattle that are picked up after the stated delivery dates will be subject to a 2# per day increase on the base weight and any weight stops for each day late after the last stated delivery date.

Lot 4226 1 Load of STEERS

Price: \$ _____ Buyer # _____

Mitchell Farms (Travis Mitchell)
Saluda, SC - 45 miles west of Columbia, SC



Home-Raised, GAP-4, CARE, Verified Natural, NHTC, Backgrounded, Weaned

Base Weight: 700 lbs. Wt. Stop: 735 lbs. Variance: 150 lbs.

Pickup Date: August 12-16 **Estimated Head Count** 69

Slide/Shrink: 2% shrink and slide \$10/cwt topside only

Weigh: Certified MACS ground scales at farm

Notice to load: 48-72 hours **Weaned:** 75+ days

Colors: 69 hd blk/bwf, 3 hd ch-x

Muscling: 95% #1, 5% #1.5

Nutrition: Bunk fed 10-12# ph/pd of 14% CPC feed with free choice Purina mineral, pasture, and hay.

Vaccinations: Vista Once (2x), Endovac (1x), Vision 7 somnus (2x)

Dewormer: Eprinex (1x), Safeguard (1x) **Implants:** None

Genetics: 50-75% Angus. Sired by Yon Angus and SimAngus bulls or 1 Ultrablack bull out of Angus-based cows.

Programs: GAP-4; Beef CARE; IMI Verified Natural; NHTC; Source and Age; Seller Affidavit

Comments: Broke to bunks and waters. A very good load of steers that were born last fall with complete records. EID tagged. Steers are GAP certified, verified natural, and NHTC with GAP certificate transferring at no cost to buyer (GAP#, Exp). Calves are also BeefCARE certified. A very good load of steers ready to go to feed.

MACS Rep: David Landreth, 864-444-8214

Programs:



Lot 4227 1 Load of STEERS

Price: \$ _____ Buyer # _____

Piney Woods Farm (Buron Lanier)
Burgaw, NC - 40 miles southeast of Clinton, NC



Home-Raised, GAP-4, Verified Natural, Backgrounded, Weaned, BQA Cert.

Base Weight: 735 lbs. Wt. Stop: 770 lbs. Variance: 250 lbs.

Pickup Date: September 2-6 **Estimated Head Count** 66

Slide/Shrink: 2% shrink and slide \$10/cwt topside only

Weigh: Hauled 5 miles, weighed on the truck

Notice to load: 48-72 hours **Weaned:** 75+ days

Colors: 20% blk/bwf, 80% Red Angus X Char

Muscling: 95% #1, 5% #1.5

Nutrition: Hand fed a little commodity pellet feed and grazing clover and perennial grass mixture on rotational grazing. High mag chelated mineral.

Vaccinations: Vista Once (1x), Vista 5 (1x), Vision 7 somnus (1x), Vision 7 (1x)

Dewormer: Dectomax Inject. **Implants:** None

Genetics: 50-75% Red Angus or Angus. Sired by Red Angus, SimAngus, or Charolais bulls. Out of Red Angus and Angus-X cows with the Charolais bulls being bred to Red Angus cows.

Programs: GAP-4; BeefTraxx Verified Natural; NHTC; Source & Age; Seller Affidavit

Comments: Broke to bunks and waters. Calves born last fall and have been weaned just on grass, fed just a little to keep them coming up. Complete calving and management records. Will be GAP-4 certified, certificate can transfer at no cost to buyer (GAP#21021, Exp 11/19/24). Cattle are 840 EID tagged for Verified Natural and NHTC, certified through BeefTraxx.

MACS Rep: Jeff Martin, 910-379-9173; Brooke Harward, 704-322-9770

Programs:



Cattle that are picked up after the stated delivery dates will be subject to a 2# per day increase on the base weight and any weight stops for each day late after the last stated delivery date.

Lot 4228 1 Load of STEERS

Price: \$ _____ Buyer # _____

TRF Farms
Lawndale, NC - 20 miles north of Shelby, NC



Home-Raised, GAP-4, Verified Natural, Backgrounded, Weaned, BQA Certified

Base Weight: 745 lbs. Wt. Stop: 780 lbs. Variance: 60 lbs.

Pickup Date: August 13 **Estimated Head Count** 65

Slide/Shrink: 2% shrink and slide \$10/cwt topside only

Weigh: Hauled 15 miles, sorted, weighed on certified ground scales

Notice to load: 48 hours **Weaned:** 60+ days

Colors: 55 hd blk/bwf, 1 hd red, 9 hd ch-x

Muscling: 95% #1, 5% #1.5

Nutrition: Hand fed CPC developer feed with free choice mineral, pasture, and hay.

Vaccinations: Vista Once SQ (1x), Vista 5 (1x), Vision 7 (2x)

Dewormer: Dectomax Inj, Safeguard **Implants:** None

Genetics: ****NeoGen Elite genetics**** Predominantly Angus-based. Sired by breed-leading Angus, Hereford, Charolais, or SimAngus bulls. Hereford bulls are top 1-2% for CHBS (Marb, REA, etc). Charolais bulls are top 2% Marbling. About 25-35% of the load are AI-sired by Select Sires' bulls Yon County Road, Tehama Tahoe, or Wilks Regiment (Angus) or JMAR Lead Time (Charolais). *RWF are rednecked type cattle and no pink-nosed chars on the load.

Programs: GAP-4; BeefTraxx Verified Natural; NHTC; Source & Age; Seller Affidavit

Comments: Broke to bunks and waters. A reputational set of calves born last fall and under very good management protocols for health, feed, and genetics. Calves are all 840 EID tagged and verified natural. GAP-4 certificate can transfer at no cost to the buyer (GAP#21186, Exp 11/28/24). TRF Farms is a partnership of Thompson & Son, Royster Turkey Farm, & Fieldstone Farm. *Calf crop DNA tested through NeoGen, ranking as Elite in the Igenity Terminal Index, ranking in the top 25% of all Igenity tested cattle.

MACS Rep: Marcus Harward, 704-322-0840

Flesh: Medium
Frame: Medium



Lot 4229 0.85 Load of STEERS*

Price: \$ _____ Buyer # _____

Rushton Farms (Bruce Rushton)
Saluda, SC - 45 miles west of Columbia, SC



Home-Raised, GAP-4, CARE, Verified Natural, NHTC, Backgrounded, Weaned

Base Weight: 750 lbs. Wt. Stop: 785 lbs. Variance: 150 lbs.

Pickup Date: August 12-16 **Estimated Head Count** 55

Slide/Shrink: 2% shrink and slide \$10/cwt topside only

Weigh: Certified MACS ground scales at farm

Notice to load: 48-72 hours **Weaned:** 75+ days

Colors: 100% blk/bwf

Muscling: 95% #1, 5% #1.5

Nutrition: Bunk fed 7# ph/pd of 14% CPC feed with free choice Multi-Kare mineral, pasture, and hay.

Vaccinations: Vista Once (2x), Vision 7 somnus (2x), Endovac (2x)

Dewormer: Cydectin (1x), Ivomec (1x) **Implants:** None

Genetics: 75% Angus. Sired by Yon Angus bulls out of high % Angus cows. Angus Verified sires with IMI Global.

Genetic Merit Beef Score of 146.

Programs: GAP-4; Beef CARE; IMI Verified Natural; NHTC; Source and Age; Seller Affidavit; Angus Verified

Comments: Broke to bunks and waters. All calves born last fall with complete records. EID tagged. A fancy set of steers that are GAP certified, verified natural, and NHTC with GAP certificate transferring at no cost to buyer (GAP#; Exp). Calves are also BeefCARE certified with excellent genetics behind them. 55 head at about 41,000 lbs. Can finish with 10 heifers at 700# at buyer's request.

MACS Rep: David Landreth, 864-444-8214

Flesh: Medium
Frame: Medium



Cattle that are picked up after the stated delivery dates will be subject to a 2# per day increase on the base weight and any weight stops for each day late after the last stated delivery date.

Lot 4230 1 Load of STEERS

Price: \$ _____ Buyer # _____

M & M Farms
Snow Camp, NC - 20 miles southeast of Greensboro, NC



Home-Raised, GAP-4, Verified Natural, NHTC, Backgrounded, Weaned

Base Weight: 775 lbs. Wt. Stop: 810 lbs. Variance: 170 lbs.

Pickup Date: August 12-15 **Estimated Head Count** 63

Slide/Shrink: 2% shrink and slide \$10/cwt topside only

Weigh: Weighed at Alamance cattlemen's barn on certified MACS ground scales

Notice to load: 48 hours **Weaned:** 60+ days

Colors: 75% blk/bwf, 25% ch-x or red

Flesh: Medium

Muscling: 95% #1, 5% #1.5

Frame: Medium

Nutrition: Bunk fed TMR of soyhulls and corn gluten with free choice mineral, pasture, and hay.

Vaccinations: Vista Once (1x), Vista 5 (1x), Vision 7 (2x)

Dewormer: Dectomax (2x) **Implants:** None

Genetics: 50% or more Angus. Sired by high-performing Angus, SimAngus, or Char-Angus bulls out of Angus-X and Char-X cows.

Programs: GAP-4; BeefTraxx Verified Natural; NHTC; Source & Age; Seller Affidavit

Comments: Broke to bunks and waters. A reputational set of fancy calves, all born last fall, double vaccinated, and natural. GAP-4 certificate can transfer at no cost to buyer (GAP#21197; Exp 11/19/24). Will be EID tagged for Verified Natural and NHTC 1 if needed, certified through BeefTraxx. Would like to load both M&M Farms steers the same day if possible.

MACS Rep: Marcus Harward, 704-322-0840

Programs:



Lot 4231 2 Loads of STEERS

Price: \$ _____ Buyer # _____

Scotton Farms
Staley, NC - 20 miles southeast of Greensboro, NC



Backgrounded, Weaned

Base Weight: 740 lbs. Wt. Stop: 790 lbs. Variance: 150 lbs.

Pickup Date: August 12-16 **Estimated Head Count** 131

Slide/Shrink: No shrink and slide \$10/cwt topside only

Weigh: Hauled 15 miles to Alamance Cattlemen's barn, unloaded, weighed on MACS certified ground scales

Notice to load: 48 hours **Weaned:** 200+ days

Colors: 80% blk/bwf, 12 hd char-x, 10 hd red/rwf, 1 hd char

Flesh: Medium-Minus

Muscling: 90% #1, 10% #1.5

Frame: Medium

Nutrition: Bunk fed 7# daily of ground corn and cotton seed. Running on pasture since last late fall. Free choice hay and mineral.

Vaccinations: Bovi-Shield Gold One Shot (1x), Vision 7 20/20 (1x)

Dewormer: Dectomax (1x), Safeguard (1x) **Implants:** Ralgro (1x)

Genetics: Commercial Angus-based and crossbred.

Programs: No

Comments: Broke to bunks and waters. Purchased as 3-weights, vaccinated, and turned out on grass late last fall. Have primarily been on grass and hand fed daily, carrying just a medium/light flesh. A very docile set of steers. A good set of steers to go to grass or feed. **Would like to load the two loads on separate days if possible.**

MACS Rep: Marcus Harward, 704-322-0840

Programs:



Lot 4232 1 Load of STEERS

Price: \$ _____ Buyer # _____

Hannah Cattle Company (Matt Hannah)
Linwood, NC - 25 miles south of Winston-Salem, NC

Backgrounded, Weaned, BQA Certified

Base Weight: 775 lbs. Wt. Stop: 815 lbs. Variance: 150 lbs.

Pickup Date: September 9-13 **Estimated Head Count** 63

Slide/Shrink: 2% shrink and slide \$10/cwt topside only

Weigh: Certified MACS ground scales at farm

Notice to load: 48 hours **Weaned:** 90+ days

Colors: 60 hd blk/bwf, 2 hd red/rwf, 1 hd ch-x

Muscling: 95% #1, 5% #1.5

Nutrition: Bunk fed a sorghum silage TMR with free choice mineral, pasture, and hay.

Vaccinations: Vista Once (1x), Vista 5 (1x), Nasalgen (1x), Cavalry 9 (2x)

Dewormer: Safeguard (1x), Dectomax (1x) **Implants:** Revalor G (1x)

Genetics: Commercial Angus-based.

Programs: No

Comments: Broke to bunks and waters. Put together from local producers, triple vaccinated, and backgrounded on pasture being fed just a little bit to keep them coming up. A very good set of steers. Over 100 head here to sort a load out of.

MACS Rep: Jimmy Dagenhart, 704-425-3587

Programs:



Flesh: Medium

Frame: Medium

Lot 4233 0.85 Load of STEERS*

Price: \$ _____ Buyer # _____

Buzhardt 5 Farms (Daryl Buzhardt)
Saluda, SC - 45 miles west of Columbia, SC

Home-Raised, GAP-4, CARE, Verified Natural, NHTC, Backgrounded, Weaned

Base Weight: 790 lbs. Wt. Stop: 825 lbs. Variance: 150 lbs.

Pickup Date: August 12-16 **Estimated Head Count** 50

Slide/Shrink: 2% shrink and slide \$10/cwt topside only

Weigh: Certified MACS ground scales at farm

Notice to load: 48-72 hours **Weaned:** 75+ days

Colors: 100% blk/bwf

Muscling: 95% #1, 5% #1.5

Nutrition: Bunk fed 10-12# ph/pd of 14% CPC feed with free choice Purina mineral, pasture, and hay.

Vaccinations: Vista Once (2x), Endovac (1x), Vision 7 somnus (2x)

Dewormer: Eprinex (1x), Safeguard (1x) **Implants:** None

Genetics: 75% or more Angus. Sired by Yon Angus or SimAngus bulls out of Angus-based cows.

Programs: GAP-4; Beef CARE; IMI Verified Natural; NHTC; Source and Age; Seller Affidavit

Comments: Broke to bunks and waters. All calves born last fall. EID tagged. Another fancy set of calves that are GAP certified, verified natural, and NHTC with GAP certificate transferring at no cost to buyer (GAP#, Exp). Calves are also Beef CARE certified. Buyer can take just steers at 40,000 lbs. or we can finish it with heifers at 725#.

MACS Rep: David Landreth, 864-444-8214

Programs:



Flesh: Medium

Frame: Medium



Lot 4234 1 Load of STEERS

Price: \$ _____ Buyer # _____

TRF Farms

Lawndale, NC - 20 miles north of Shelby, NC

Home-Raised, GAP-4, Verified Natural, Backgrounded, Weaned, BQA Certified

Base Weight: 810 lbs. **Wt. Stop:** 845 lbs. **Variance:** 130 lbs.

Pickup Date: August 13 **Estimated Head Count** 60
Slide/Shrink: 2% shrink and slide \$10/cwt topside only
Weigh: Hauled 15 miles, sorted, weighed on certified ground scales
Notice to load: 48 hours **Weaned:** 60+ days
Colors: 52 hd blk/bwf, 1 hd rwf, 7 hd ch-x
Muscling: 95% #1, 5% #1.5
Nutrition: Hand fed CPC developer feed with free choice mineral, pasture, and hay.
Vaccinations: Vista Once SQ (1x), Vista 5 (1x), Vision 7 (2x)
Dewormer: Dectomax Inj, Safeguard **Implants:** None
Genetics: ****NeoGen Elite genetics**** Predominantly Angus-based. Sired by breed-leading Angus, Hereford, Charolais, or SimAngus bulls. Hereford bulls are top 1-2% for CHBS (Marb, REA, etc). Charolais bulls are top 2% Marbling. About 25-35% of the load are AI-sired by Select Sires' bulls Yon County Road, Tehama Tahoe, or Wilks Regiment (Angus) or JMAR Lead Time (Charolais). *RWF are rednecked type cattle and no pink-nosed chars on the load.
Programs: GAP-4; BeefTraxx Verified Natural; NHTC; Source & Age; Seller Affidavit
Comments: Broke to bunks and waters. A reputational set of calves born last fall and under very good management protocols for health, feed, and genetics. Calves are all 840 EID tagged and verified natural. GAP-4 certificate can transfer at no cost to the buyer (GAP#21186, Exp 11/28/24). TRF Farms is a partnership of Thompson & Son, Royster Turkey Farm, & Fieldstone Farm. ****Calf crop DNA tested through NeoGen, ranking as Elite in the Igenity Terminal Index, ranking in the top 25% of all Igenity tested cattle.**
MACS Rep: Marcus Harward, 704-322-0840



Flesh: Medium
Frame: Medium

Programs:



Lot 4235 2 Loads of STEERS

Price: \$ _____ Buyer # _____

R. Gerald Warren Farms

Clinton, NC - 40 miles east of Fayetteville, NC

Home-Raised, Natural, Backgrounded, Weaned, BQA Certified

Base Weight: 810 lbs. **Wt. Stop:** 850 lbs. **Variance:** 125 lbs.

Pickup Date: September 16-20 **Estimated Head Count** 120
Slide/Shrink: 2% shrink and slide \$10/cwt topside only
Weigh: Hauled 10 miles, weighed on the truck
Notice to load: 48 hours **Weaned:** 90+ days
Colors: 80% blk/bwf, 10 hd char-x, 16 hd red/rwf
Muscling: 95% #1, 5% #1.5
Nutrition: TMR limiter feed on self feeders with free choice mineral, pasture, and hay
Vaccinations: KCH Market Ready Program - Pyramid 5 + Presponse (1x), Pyramid 5 (1x), Alpha-7/MB-1 (1x)
Dewormer: Dectomax Inject, Synanthic **Implants:** None
Genetics: 50-75% Angus. Sired by Angus, SimAngus, or a couple Hereford or Charolais bulls and out of mostly Angus-based cows.
Programs: Seller Affidavit
Comments: Broke to bunks and waters. Born last fall with complete calving records. 840 EID tagged for Source and Age. An excellent set of high growth steers from a reputational program that will feed and finish well. Seller will also sign buyer's all-natural affidavits if needed. ****CATTLE CAN BE GAP CERTIFIED PRIOR TO SHIPMENT****
MACS Rep: Jeff Martin, 910-379-9173; Marcus Harward, 704-322-0840



Flesh: Medium
Frame: Medium

Programs:



Cattle that are picked up after the stated delivery dates will be subject to a 2# per day increase on the base weight and any weight stops for each day late after the last stated delivery date.

Lot 4236 0.85 Load of STEERS*

Price: \$ _____ Buyer # _____

Greene Brothers Farm (Junie & Joey Green)
Jackson, SC - 20 miles southeast of Augusta, GA



Home-Raised, GAP-4, CARE, Verified Natural, NHTC, Backgrounded, Weaned

Base Weight: 825 lbs. Wt. Stop: 860 lbs. Variance: 150 lbs.

Pickup Date: August 12-16 **Estimated Head Count** 49
Slide/Shrink: 2% shrink and slide \$10/cwt topside only
Weigh: Certified MACS ground scales at farm
Notice to load: 48-72 hours **Weaned:** 75+ days

Colors: 47 hd blk/bwf, 2 hd ch-x

Muscling: 95% #1, 5% #1.5

Nutrition: Hand fed TMR of ground corn, oats, corn gluten, and soyhulls with free choice mineral, pasture, and hay.

Vaccinations: Vista 5 (1x), Vista Once (1x), Vision 7 somnus (2x)

Dewormer: Eprinex, Safeguard **Implants:** None

Genetics: 75% or more Angus. Sired by Angus bulls from Bridges, Yon, & Chatel and out of Angus and Angus-X cows. Angus Verified sires with IMI Global. **Genetic Merit Beef Score of 159.**

Programs: GAP-4; Beef CARE; IMI Verified Natural; NHTC; Source and Age; Seller Affidavit; Angus Verified

Comments: Broke to bunks and waters. All calves were born Fall 2023 with complete records. EID tagged. A fancy set of natural steers that should feed and grade out very well. Calves are GAP certified, verified natural, and NHTC with GAP certificate transferring at no cost to buyer (GAP#20946, Exp 10/26/24). Also CARE certified. There are 49 head at 825 lbs (~41,000 lbs), can finish with 10-12 heifers at 775# at buyer's request.

MACS Rep: David Landreth, 864-444-8214

Flesh: Medium

Frame: Medium



Lot 4237 1 Load of STEERS

Price: \$ _____ Buyer # _____

Falling Creek Cattle Co (Manfred & Braxton Hood)
Grantham, NC - 14 miles SW of Goldsboro, NC; 50 miles SE of Raleigh, NC



Purchased Locally, Backgrounded, Weaned

Base Weight: 825 lbs. Wt. Stop: 860 lbs. Variance: 150 lbs.

Pickup Date: August 12-16 **Estimated Head Count** 59
Slide/Shrink: 2% shrink and slide \$10/cwt topside only
Weigh: Hauled 10 miles, weighed on the truck on certified scales
Notice to load: 48 hours **Weaned:** 150+ days

Colors: 92% blk/bwf, 3 hd red/rwf, 2 hd ch-x

Muscling: 95% #1, 5% #1.5

Nutrition: Bunk fed TMR (corn silage, cotton seed, chopped hay) with mineral.

Vaccinations: Vista Once (1x), Vista 5 (1x), Vision 7 20/20 (2x)

Dewormer: Ivermec (1x), Safeguard (1x), Cydectin (1x) **Implants:** None

Genetics: Commercial Angus-based.

Programs: No

Comments: Broke to bunks and waters. Docile. Purchased from local producers as 4-weights and weaned and backgrounded for over 150 days. Fancy steers ready to go on feed carrying just a medium flesh. May be 1-2 with a blue eye.

MACS Rep: Jeff Martin, 910-379-9173; Marcus Harward, 704-322-0840

Flesh: Medium

Frame: Medium



Lot 4238 1 Load of STEERS

Price: \$ _____ Buyer # _____

Wester Farms

Louisburg, NC - 30 miles northeast of Raleigh, NC

Home-Raised, Backgrounded, Weaned, BQA Certified



Base Weight: 835 lbs. **Wt. Stop:** 870 lbs. **Variance:** 125 lbs.

Pickup Date: August 12-16 **Estimated Head Count** 58

Slide/Shrink: 2% shrink and slide \$10/cwt topside only

Weigh: Hauled 10 miles, weighed on certified truck scales

Notice to load: 48 hours **Weaned:** 75+ days

Colors: 90% blk/bwf, 10% char-x or red

Flesh: Medium

Muscling: 95% #1, 5% #1.5

Frame: Medium

Nutrition: Bunk fed TMR (corn silage, corn gluten, cotton by product, veg scraps) with free choice mineral, pasture, and hay

Vaccinations: Pyramid 5 + Presponse (1x), Pyramid 5 (1x), Inforce 3 (1x), Caliber 7 (2x), Multimix (2x)

Dewormer: Dectomax, Safeguard

Implants: Synovex S

Genetics: 50-75% Angus. Sired by Angus, SimAngus, or Balancer bulls out of Angus, SimAngus, or Balancer based cows.

Programs: No

Comments: Broke to bunks and waters. Born last fall with complete calving records. A very good set of high-performing steers coming from the Wester Farms program. Steers are deep-sided, thick type calves. An excellent set of high growth steers from a reputational program that will feed and finish well.

MACS Rep: Jeff Martin, 910-379-9173; Catherine Edwards, 704-550-7920

Programs:



Lot 4239 1 Load of HEIFERS

Price: \$ _____ Buyer # _____

TRF Farms

Lawndale, NC - 20 miles north of Shelby, NC

Home-Raised, GAP-4, Verified Natural, Backgrounded, Weaned, BQA Certified



Base Weight: 545 lbs. **Wt. Stop:** 580 lbs. **Variance:** 150 lbs.

Pickup Date: August 16 **Estimated Head Count** 89

Slide/Shrink: 2% shrink and slide \$15/cwt topside only

Weigh: Hauled 15 miles, sorted, weighed on certified ground scales

Notice to load: 48 hours **Weaned:** 60+ days

Colors: 76 hd blk/bwf, 3 hd rwf, 10 hd ch-x

Flesh: Medium

Muscling: 95% #1, 5% #1.5

Frame: Medium

Nutrition: Hand fed CPC developer feed with free choice mineral, pasture, and hay.

Vaccinations: Vista Once SQ (1x), Vista 5 (1x), Vision 7 (2x)

Dewormer: Dectomax Inj, Safeguard

Implants: None

Genetics: ****NeoGen Elite genetics**** Predominantly Angus-based. Sired by breed-leading Angus, Hereford, Charolais, or SimAngus bulls. Hereford bulls are all 840 EID tagged and verified natural. GAP-4 certificate can transfer at no cost to the buyer (GAP#21186, Exp 11/28/24). TRF Farms is a partnership of Thompson & Son, Royster Turkey Farm, & Fieldstone Farm. ****Calf crop DNA tested through NeoGen, ranking as Elite in the Igenity Terminal Index, ranking in the top 25% of all Igenity tested cattle.**

Programs: GAP-4; BeefTraxx Verified Natural; NHTC; Source and Age; Affidavit. **Heifers Preg-Checked:** Open, blood tested.

Comments: Broke to bunks and waters. A reputational set of calves born last fall and under very good management protocols for health, feed, and genetics. Calves are all 840 EID tagged and verified natural. GAP-4 certificate can transfer at no cost to the buyer (GAP#21186, Exp 11/28/24). TRF Farms is a partnership of Thompson & Son, Royster Turkey Farm, & Fieldstone Farm. ****Calf crop DNA tested through NeoGen, ranking as Elite in the Igenity Terminal Index, ranking in the top 25% of all Igenity tested cattle.**

MACS Rep: Marcus Harward, 704-322-0840

Programs:



Cattle that are picked up after the stated delivery dates will be subject to a 2# per day increase on the base weight and any weight stops for each day late after the last stated delivery date.

Lot 4240 1 Load of HEIFERS

Price: \$ _____ Buyer # _____

TRF Farms
Lawndale, NC - 20 miles north of Shelby, NC

Home-Raised, GAP-4, Verified Natural, Backgrounded, Weaned, BQA Certified

Base Weight: 625 lbs. Wt. Stop: 660 lbs. Variance: 60 lbs.

Pickup Date: August 15 **Estimated Head Count** 78
Slide/Shrink: 2% shrink and slide \$12/cwt topside only
Weigh: Hauled 15 miles, sorted, weighed on certified ground scales
Notice to load: 48 hours **Weaned:** 60+ days
Colors: 79 hd blk/bwf, 1 hd rwf, 8 hd ch-x
Muscling: 95% #1, 5% #1.5
Nutrition: Hand fed CPC developer feed with free choice mineral, pasture, and hay.
Vaccinations: Vista Once SQ (1x), Vista 5 (1x), Vision 7 (2x)
Dewormer: Dectomax Inj, Safeguard **Implants:** None
Genetics: ****NeoGen Elite genetics**** Predominantly Angus-based. Sired by breed-leading Angus, Hereford, Charolais, or SimAngus bulls. Hereford bulls are top 1-2% for CHB\$ (Marb, REA, etc). Charolais bulls are top 2% Marbling. About 10-20% of the load are AI-sired by Select Sires' bulls Yon County Road, Tehama Tahoe, or Wilks Regiment (Angus) or JMAR Lead Time (Charolais). *RWF are rednecked type cattle and no pink-nosed chars on the load.
Programs: GAP-4; BeefTraxx Verified Natural; NHTC; Source and Age; Affidavit. **Heifers Preg-Checked:** Open, blood tested.
Comments: Broke to bunks and waters. A reputational set of calves born last fall and under very good management protocols for health, feed, and genetics. Calves are all 840 EID tagged and verified natural. GAP-4 certificate can transfer at no cost to the buyer (GAP#21186, Exp 11/28/24). TRF Farms is a partnership of Thompson & Son, Royster Turkey Farm, & Fieldstone Farm. ****Calf crop DNA tested through NeoGen, ranking as Elite in the Igenity Terminal Index, ranking in the top 25% of all Igenity tested cattle.**
MACS Rep: Marcus Harward, 704-322-0840



Flesh: Medium
Frame: Medium



Lot 4241 1 Load of HEIFERS

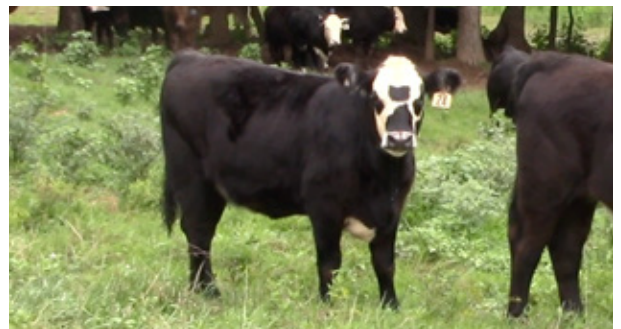
Price: \$ _____ Buyer # _____

TRF Farms
Lawndale, NC - 20 miles north of Shelby, NC

Home-Raised, GAP-4, Verified Natural, Backgrounded, Weaned, BQA Certified

Base Weight: 695 lbs. Wt. Stop: 730 lbs. Variance: 90 lbs.

Pickup Date: August 15 **Estimated Head Count** 70
Slide/Shrink: 2% shrink and slide \$12/cwt topside only
Weigh: Hauled 15 miles, sorted, weighed on certified ground scales
Notice to load: 48 hours **Weaned:** 60+ days
Colors: 59 hd blk/bwf, 4 hd red/rwf, 7 hd ch-x
Muscling: 95% #1, 5% #1.5
Nutrition: Hand fed CPC developer feed with free choice mineral, pasture, and hay.
Vaccinations: Vista Once SQ (1x), Vista 5 (1x), Vision 7 (2x)
Dewormer: Dectomax Inj, Safeguard **Implants:** None
Genetics: ****NeoGen Elite genetics**** Predominantly Angus-based. Sired by breed-leading Angus, Hereford, Charolais, or SimAngus bulls. Hereford bulls are top 1-2% for CHB\$ (Marb, REA, etc). Charolais bulls are top 2% Marbling. About 10-20% of the load are AI-sired by Select Sires' bulls Yon County Road, Tehama Tahoe, or Wilks Regiment (Angus) or JMAR Lead Time (Charolais). *RWF are rednecked type cattle and no pink-nosed chars on the load.
Programs: GAP-4; BeefTraxx Verified Natural; NHTC; Source and Age; Affidavit. **Heifers Preg-Checked:** Open, blood tested.
Comments: Broke to bunks and waters. A reputational set of calves born last fall and under very good management protocols for health, feed, and genetics. Calves are all 840 EID tagged and verified natural. GAP-4 certificate can transfer at no cost to the buyer (GAP#21186, Exp 11/28/24). TRF Farms is a partnership of Thompson & Son, Royster Turkey Farm, & Fieldstone Farm. ****Calf crop DNA tested through NeoGen, ranking as Elite in the Igenity Terminal Index, ranking in the top 25% of all Igenity tested cattle.**
MACS Rep: Marcus Harward, 704-322-0840



Flesh: Medium
Frame: Medium



Cattle that are picked up after the stated delivery dates will be subject to a 2# per day increase on the base weight and any weight stops for each day late after the last stated delivery date.

Lot 4242 1 Load of HEIFERS

Price: \$ _____ Buyer # _____

Dixon Family Farms & Holt Farms
Graham, NC - 20 miles southeast of Greensboro, NC

Backgrounded, Weaned

Base Weight: 625 lbs. Wt. Stop: 660 lbs. Variance: 150 lbs.

Pickup Date: August 12-16 **Estimated Head Count** 78

Slide/Shrink: 2% shrink and slide \$12/cwt topside only

Weigh: Certified MACS ground scales at farm

Notice to load: 48 hours **Weaned:** 90+ days

Colors: 90% blk/bwf, 4 hd ch-x, 3 hd red

Muscling: 90% #1, 10% #1.5

Nutrition: Bunk fed a little silage TMR with grain in bunks with free choice mineral, pasture, and hay.

Vaccinations: Bovi-Shield Gold One Shot (1x), Bovi-Shield Gold 5 (1x), Ultrabac 7 (2x), Pinkeye (1x)

Dewormer: Ivomec Inject. **Implants:** None

Genetics: Commercial Angus-based.

Programs: No **Heifers Preg-Checked:** Open, not palpated.

Comments: Broke to bunks and waters. Purchased and backgrounded. From two neighboring farms and brought together the morning of load out. 2-3 may have a spot in their eye. Grass-flesh cattle.

MACS Rep: Marcus Harward, 704-322-0840

Programs:  



Flesh: Medium

Frame: Medium

Lot 4243 1 Load of HEIFERS

Price: \$ _____ Buyer # _____

M & M Farms
Siler City, NC - 30 miles southeast of Greensboro, NC

Home-Raised, GAP-4, Verified Natural, NHTC, Backgrounded, Weaned

Base Weight: 710 lbs. Wt. Stop: 745 lbs. Variance: 170 lbs.

Pickup Date: August 12-15 **Estimated Head Count** 68

Slide/Shrink: 2% shrink and slide \$10/cwt topside only

Weigh: Certified MACS ground scales at farm

Notice to load: 48 hours **Weaned:** 60+ days

Colors: 75% blk/bwf, 25% ch-x or red

Muscling: 95% #1, 5% #1.5

Nutrition: Bunk fed TMR of soyhulls, corn gluten, and a little corn with free choice mineral, pasture, and hay.

Vaccinations: Vista Once (1x), Vista 5 (1x), Vision 7 (2x)

Dewormer: Dectomax (2x) **Implants:** None

Genetics: 50% or more Angus. Sired by high-performing Angus, SimAngus, or Char-Angus bulls out of Angus-X and Char-X cows.

Programs: GAP-4; BeefTraxx Verified Natural; NHTC; SAV; Affidavit **Heifers Preg-Checked:** Open, not palpated.

Comments: Broke to bunks and waters. A reputational set of fancy calves, all born last fall, double vaccinated, and natural. GAP-4 certificate can transfer at no cost to buyer (GAP#21197; Exp 11/19/24). Will be EID tagged for Verified Natural and NHTC if needed, certified through BeefTraxx. **Can not load the same day as the M&M steers**

MACS Rep: Marcus Harward, 704-322-0840

Programs:       



Flesh: Medium

Frame: Medium

Lot 4244 1 Load of HEIFERS

Price: \$ _____ Buyer # _____

Donald Chriscoe Farm
Asheboro, NC - 40 miles south of Greensboro, NC

Affidavit Natural, Backgrounded, Weaned

Base Weight: 750 lbs. Wt. Stop: 785 lbs. Variance: 150 lbs.

Pickup Date: August 8-16 **Estimated Head Count** 65

Slide/Shrink: 2% shrink and slide \$10/cwt topside only

Weigh: Certified ground scales at farm

Notice to load: 24-48 hours **Weaned:** 120+ days

Colors: 86% blk/bwf, 7 hd ch-x, 2 hd red

Muscling: 95% #1, 5% #1.5

Nutrition: Bunk fed haylage and TMR (wet corn gluten, cotton) with access to mineral, hay, and pasture.

Vaccinations: Vista 5 (2x), Nuplura (1x), Vision 7 20/20 (1x), Ocuguard Pinkeye (1x)

Dewormer: Ivomec Inject. (2x) **Implants:** None

Genetics: Commercial Angus-based. Mainly sired by Angus and SimAngus bulls.

Programs: Seller Affidavit **Heifers Preg-Checked:** Yes - palpated open

Comments: Broke to bunks and waters. Reputational calves purchased from local producers and backgrounded at Chriscoe's for 100+ days. Owner affidavit natural - signed Meyer's affidavits from original producers. Can also sign other natural affidavits.

MACS Rep: Marcus Harward, 704-322-0840

Programs:



Flesh: Medium

Frame: Medium

Watch videos of all lots online on DV Auction or at www.macsvideo.com



Cattle that are picked up after the stated delivery dates will be subject to a 2# per day increase on the base weight and any weight stops for each day late after the last stated delivery date.

Lot 4245 0.6 Load of STRS/HFRS

Price: \$ _____ Buyer # _____

M & M Farms
Siler City, NC - 30 miles southeast of Greensboro, NC



Home-Raised, GAP-4, Verified Natural, NHTC, Backgrounded, Weaned

~17 Steers Wt: 540 lbs. Wt. Stop: 575 lbs. Variance: 90 lbs.
~37 Hfrs Wt: 560 lbs. Wt. Stop: 595 lbs. Variance: 190 lbs.
Heifers sell \$15/cwt back

Pickup Date: August 16-17
Slide/Shrink: 2% shrink and slide \$15/cwt topside only
Weigh: Certified MACS ground scales at farm
Notice: 48 hours **Weaned:** 60+ days
Colors: 75% blk/bwf, 25% ch-x or red
Muscling: 95% #1, 5% #1.5
Nutrition: Bunk fed TMR of soyhulls, corn gluten, and a little corn with free choice mineral, pasture, and hay.
Vaccinations: Vista Once (1x), Vista 5 (1x), Vision 7 (2x)
Dewormer: Dectomax (2x) **Implants:** None
Genetics: 50% or more Angus. Sired by high-performing Angus, SimAngus, or Char-Angus bulls out of Angus-X and Char-X cows.
Programs: GAP-4; BeefTraxx Verified Natural; NHTC; SAV; Affidavit **Heifers Preg-Chcked:** Open, not palpated.
Comments: Broke to bunks and waters. A reputational set of fancy calves, all born last fall, double vaccinated, and natural. GAP-4 certificate can transfer at no cost to buyer (GAP#21197; Exp 11/19/24). Will be EID tagged for Verified Natural and NHTC if needed, certified through BeefTraxx. *Will be a partial load at about 30,000 lbs.*
MACS Rep: Marcus Harward, 704-322-0840

Flesh: Medium
Frame: Medium

Programs:



Lot 4246 0.6 Load of STRS/HFRS

Price: \$ _____ Buyer # _____

Catawba Cattlemen's Alliance
Catawba, NC - 15 miles west of Statesville, NC



Home-Raised, Verified Natural, Backgrounded, Weaned, BQA Certified

~31 Steers Wt: 600 lbs. Wt. Stop: 635 lbs. Variance: 175 lbs.
~19 Hfrs Wt: 590 lbs. Wt. Stop: 625 lbs. Variance: 140 lbs.
Heifers sell \$15/cwt back

Pickup Date: August 17-20
Slide/Shrink: 1% shrink and slide \$15/cwt topside only
Weigh: Hauled 10-20 miles, weighed on certified ground scales
Notice: 48-72 hours **Weaned:** 75-90+ days
Colors: 98% blk/bwf, 1 hd ch-x
Muscling: 90% #1, 10% #1.5
Nutrition: Hand fed 14% commodity feed or TMR with free choice mineral and pasture or hay.
Vaccinations: Vista Once SQ (1x), Vista 5 (1x), Vision 7 somnus (1x), Vision 7 (1x)
Dewormer: Safeguard, Dectomax or LongRange **Implants:** None
Genetics: 50-75%+ Angus. Sired by Angus or SimAngus bulls out of Angus-x-Continental cows.
Programs: BeefTraxx Verified Natural; NHTC; SAV; Affidavit **Heifers Preg-Chcked:** Open, not palpated.
Comments: Broke to bunks and waters. A good set of calves from the Catawba Alliance group. These calves were born last fall with 5 producers on this load. These calves are EID tagged for Verified Natural and NHTC through BeefTraxx. Will also sign buyer's natural affidavits as needed. *Will be a partial load at about 30,000 lbs.*
MACS Rep: Jimmy Dagenhart, 704-425-3587

Flesh: Medium
Frame: Medium

Programs:



Cattle that are picked up after the stated delivery dates will be subject to a 2# per day increase on the base weight and any weight stops for each day late after the last stated delivery date.

Lot 4247 1 Load of STRS/HFRS

Price: \$ _____ Buyer # _____

Rockingham Cattlemen's Alliance
Ruffin, NC - 30 miles northeast of Greensboro, NC

Home-Raised, Affidavit Natural, Backgrounded, Weaned, BQA Certified

~43 Steers Wt: 600 lbs. Wt. Stop: 635 lbs. Variance: 115 lbs.
~39 Hfrs Wt: 625 lbs. Wt. Stop: 660 lbs. Variance: 130 lbs.
Heifers sell \$16/cwt back

Pickup Date: August 12-20
Slide/Shrink: 1% shrink and slide \$12/cwt topside only
Weigh: Hauled 5-20 miles, weighed on certified ground scales
Notice: 48 hours **Weaned:** 60+ days
Colors: 65% blk/bwf, 30% char-x, 3 hd rwf
Muscling: 90% #1, 10% #1.5
Nutrition: Bunk fed commodity feed with free choice pasture, mineral, and hay
Vaccinations: Bovi-Shield Gold One Shot (2x), UltraChoice 7 (2x)
Dewormer: Safeguard (1x), Ivermectin (1x) **Implants:** None
Genetics: 60-75% Angus. Sired by registered Angus, Charolais, or Hereford bulls out of black Angus or baldie
Programs: Seller Affidavit **Heifers Preg-Checked:** Open, not palpated.
Comments: Broke to bunks and waters. All producers are BQA certified. All alliance producers use the same vaccination and management protocols with similar genetics. Calves were double vaccinated with the second round given 21-28 days prior to the sale. Calves qualify as all natural and sellers will sign buyer's natural affidavits as needed.
MACS Rep: Marcus Harward, 704-322-0840



Flesh: Medium
Frame: Medium

Programs:



Lot 4248 0.8 Load of STRS/HFRS

Price: \$ _____ Buyer # _____

M-P Cattle Co (Mike Preslar)
Pollkton, NC - 25 miles east of Charlotte, NC

Home-Raised, Backgrounded, Weaned

~30 Steers Wt: 640 lbs. Wt. Stop: 675 lbs. Variance: 150 lbs.
~27 Hfrs Wt: 625 lbs. Wt. Stop: 660 lbs. Variance: 150 lbs.
Heifers sell \$15/cwt back

Pickup Date: August 7-20
Slide/Shrink: 2% shrink and slide \$12/cwt topside only
Weigh: Certified MACS ground scales at farm
Notice: 48 hours **Weaned:** 60+ days
Colors: 100% blk/bwf
Muscling: 95% #1, 5% #1.5
Nutrition: Hand fed in bunks 6# ph/pd of a 14% TMR with free choice pasture and mineral.
Vaccinations: Vista Once (2x), Vision 7 20/20 (1x), Vision 7 somnus (1x)
Dewormer: Dectomax, Safeguard, Ivermec **Implants:** Steers-Ralgro; Heifers-None
Genetics: 60-80% Angus. Sired by Angus and SimAngus bulls out of commercial Angus cows.
Programs: No **Heifers Preg-Checked:** Open, not palpated.
Comments: Bunk broke and broke to waters. A fancy group of home-raised, docile calves that are being handfed daily. Calves are getting fed just a little and carry a light medium flesh, ready to go to grass or feed. Calves were born fall 2023 and have complete records on them. **A partial load at about 36,000 lbs.**
MACS Rep: Bruce Shankle, 704-694-8686



Flesh: Medium
Frame: 85% Medium, 15% Large

Programs:



Cattle that are picked up after the stated delivery dates will be subject to a 2# per day increase on the base weight and any weight stops for each day late after the last stated delivery date.

Lot 4249 1 Load of STRS/HFRS

Price: \$ _____ Buyer # _____

S&K Farms (Terry Kirkland)
Batesburg, SC - 40 miles west of Columbia, SC



Home-Raised, GAP-4, CARE, Verified Natural, NHTC, Backgrounded, Weaned
~39 Steers Wt: 675 lbs. Wt. Stop: 710 lbs. Variance: 150 lbs.
~34 Hfrs Wt: 625 lbs. Wt. Stop: 660 lbs. Variance: 150 lbs.
Heifers sell \$10/cwt back

Pickup Date: August 19-23
Slide/Shrink: 2% shrink and slide \$12/cwt topside only
Weigh: Certified MACS ground scales at farm
Notice: 48-72 hours **Weaned:** 75+ days
Colors: 100% blk/bwf
Muscling: 90% #1, 10% #1.5
Nutrition: Bunk fed 12# Performance 14% grower feed with free choice Purina hi-mag mineral, pasture, and hay.
Vaccinations: Vista Once (2x), Vision 7 somnus (2x)
Dewormer: Safeguard (1x) **Implants:** None
Genetics: 75% or more Angus. Sired by Yon Angus bulls out of Angus-based cows. High growth and carcass sires.
Programs: GAP-4; Beef CARE; IMI Verified Natural; NHTC; SAV; Affidavit **Heifers Preg-Cheeked:** Open, not palpated.
Comments: Broke to bunks and waters. All calves born last fall. EID tagged. A fancy set of calves that are GAP certified, verified natural, and NHTC with GAP certificate transferring at no cost to buyer (GAP#; Exp). Calves are also BeefCARE certified with very good genetics behind them.
MACS Rep: David Landreth, 864-444-8214

Flesh: Medium
Frame: Medium

Programs:



Lot 4250 1 Load of STRS/HFRS

Price: \$ _____ Buyer # _____

David Edwards
Marshville, NC - 25 miles southeast of Charlotte, NC



Home-Raised, GAP-4, All-Natural, Backgrounded, Weaned
~56 Steers Wt: 695 lbs. Wt. Stop: 730 lbs. Variance: 150 lbs.
~14 Hfrs Wt: 650 lbs. Wt. Stop: 685 lbs. Variance: 150 lbs.
Heifers sell \$12/cwt back

Pickup Date: August 12-16
Slide/Shrink: 2% shrink and slide \$12/cwt topside only
Weigh: Certified MACS ground scales at farm
Notice: 48 hours **Weaned:** 60+ days
Colors: 68 hd blk/bwf, 2 hd red
Muscling: 95% #1, 5% #1.5
Nutrition: Hand fed 3-5# ph/pd of 13% CPC feed with free choice pasture, hay, and chelated minerals.
Vaccinations: Vista Once (1x), Vista 5 (1x), Vision 7 somnus (1x), Vision 7 spur (1x)
Dewormer: Safeguard (1x), Dectomax (1x) **Implants:** None
Genetics: 65% or more Angus. Sired by Angus (Yon and Barnett) or Balancer (Judd Ranch) bulls and out of Angus-based and Angus-x-Hereford cows.
Programs: GAP-4; Seller Affidavit **Heifers Preg-Cheeked:** Open, not palpated.
Comments: Bunk broke and broke to waters. A fancy group of home-raised, docile calves that have been weaned 60+ days and double vaccinated. Complete calving records on calves. High percentage Angus and all-natural. Will sign buyer's natural affidavits as needed. GAP-4 certificate will transfer at no cost to buyer.
MACS Rep: Chuck Doolittle, 704-221-1447

Flesh: Medium
Frame: Medium

Programs:



Cattle that are picked up after the stated delivery dates will be subject to a 2# per day increase on the base weight and any weight stops for each day late after the last stated delivery date.

Lot 4251 0.9 Load of STRS/HFRS

Price: \$ _____ Buyer # _____

Shealy Farms (Eddie Shealy)
Saluda, SC - 45 miles west of Columbia, SC

Home-Raised, GAP-4, Natural, Backgrounded, Weaned



~43 Steers Wt: 700 lbs. Wt. Stop: 735 lbs. Variance: 150 lbs.
~18 Hfrs Wt: 615 lbs. Wt. Stop: 650 lbs. Variance: 150 lbs.
Heifers sell \$10/cwt back

Pickup Date: August 12-16
Slide/Shrink: 2% shrink and slide \$10/cwt topside only
Weigh: Certified MACS ground scales at farm
Notice: 48-72 hours **Weaned:** 60+ days
Colors: 57 hd blk/bwf, 4 hd ch-x
Muscling: 95% #1, 5% #1.5
Nutrition: Bunk fed 8-10# ph/pd of 14% CPC feed with free choice Purina hi-mag mineral, pasture, and hay.
Vaccinations: Vista Once (1x), Vista 5 (1x), Vision 7 somnus (2x)
Dewormer: Eprinex (1x) **Implants:** None
Genetics: 50-75% Angus. Sired by Angus (Yon) or SimAngus (Gibbs) bulls and out of Angus & Angus-x cows.
Programs: GAP-4; Seller Affidavit **Heifers Preg-Cheked:** Open, not palpated.
Comments: Broke to bunks and waters. Calves were born last fall with birthdate records and weaned 60+ days and are at least 50% Angus. Seller will sign buyer's affidavits as needed and GAP-4 certification can transfer at no cost to buyer (GAP#; Exp 9/20/24). *A partial load at about 42,000 lbs.*
MACS Rep: David Landreth, 864-444-8214

Flesh: Medium
Frame: Medium

Programs:



Lot 4252 1 Load of STRS/HFRS

Price: \$ _____ Buyer # _____

Westlake Farms LLC (Dr. Guillermo Pineda)
Saluda, SC - 45 miles west of Columbia, SC

Home-Raised, GAP-4, CARE, Verified Natural, NHTC, Backgrounded, Weaned



~54 Steers Wt: 730 lbs. Wt. Stop: 765 lbs. Variance: 150 lbs.
~25 Hfrs Wt: 685 lbs. Wt. Stop: 720 lbs. Variance: 175 lbs.
Heifers sell \$10/cwt back

Pickup Date: August 12-16
Slide/Shrink: 2% shrink and slide \$10/cwt topside only
Weigh: Certified MACS ground scales at farm
Notice: 48-72 hours **Weaned:** 75+ days
Colors: 100% blk/bwf
Muscling: 95% #1, 5% #1.5
Nutrition: Bunk fed TMR of baleage, corn gluten, soyhulls with free choice Purina mineral, pasture, and hay.
Vaccinations: Vista Once (2x), Endovac (1x), Vision 7 somnus (2x)
Dewormer: Longrange (1x), Safeguard (1x) **Implants:** None
Genetics: 75% or more Angus. Sired by Yon Angus bulls out of Angus-based cows with a small % Simmental. Angus Verified sires with IMI Global. **Genetic Merit Beef Score of 153.**
Programs: GAP-4; BeefCARE; IMI Verified Natural; NHTC; SAV; Affidavit; Angus Link **Heifers Preg-Cheked:** Open, not palpated.
Comments: Broke to bunks and waters. Born last fall and EID tagged. A very fancy set of calves that have fed out and graded very well in the past. Calves are GAP certified, verified natural, and NHTC with GAP certificate transferring at no cost to buyer (GAP#; Exp). Calves are also BeefCARE certified and AngusLink with excellent genetic merit scores.
MACS Rep: David Landreth, 864-444-8214

Flesh: Medium
Frame: Medium



Programs:



Cattle that are picked up after the stated delivery dates will be subject to a 2# per day increase on the base weight and any weight stops for each day late after the last stated delivery date.

Lot 4253 0.9 Load of STRS/HFRS

Price: \$ _____ Buyer # _____

Saluda High Point Farms
Saluda, SC - 45 miles west of Columbia, SC



Home-Raised, GAP-4, Verified Natural, NHTC, Backgrounded, Weaned

~46 Steers Wt: 760 lbs. Wt. Stop: 795 lbs. Variance: 150 lbs.
~13 Hfrs Wt: 705 lbs. Wt. Stop: 740 lbs. Variance: 150 lbs.
Heifers sell \$10/cwt back

Pickup Date: August 12-16
Slide/Shrink: 2% shrink and slide \$10/cwt topside only
Weigh: Certified MACS ground scales at farm
Notice: 48-72 hours **Weaned:** 75+ days
Colors: 55 hd blk/bwf, 4 hd ch-x
Muscling: 95% #1, 5% #1.5
Flesh: Medium
Frame: Medium
Nutrition: Bunk fed 10-12# ph/pd of 13% CPC feed with free choice Purina hi-mag mineral, pasture, and hay.
Vaccinations: Vista Once (2x), Vision 7 somnus (2x)
Dewormer: Eprinex (1x), Safeguard (1x) **Implants:** None
Genetics: 50-75% Angus. Sired by Yon Angus and SimAngus bulls out of Angus-based cows.
Programs: GAP-4; BeefTraxx Verified Natural; NHTC; SAV; Affidavit **Heifers Preg-Cheeked:** Open, not palpated.
Comments: Broke to bunks and waters. A fancy set of calves that are high percentage Angus and have fed and graded well in the past. Calves were born last fall with birthdate records and good management records. GAP certified and will transfer at no cost to buyer. Calves are also EID tagged for verified natural and NHTC through BeefTraxx.
MACS Rep: David Landreth, 864-444-8214

Programs:



Lot 4254 0.8 Load of STRS/HFRS

Price: \$ _____ Buyer # _____

Autumn Horizons (Tyler & Boots Vandemark)
Nashville, NC - 40 miles northeast of Raleigh, NC



Home-Raised, Non-Weaned, Vaccinated

~28 Steers Wt: 715 lbs. Wt. Stop: 765 lbs. Variance: 200 lbs.
~28 Hfrs Wt: 650 lbs. Wt. Stop: 700 lbs. Variance: 200 lbs.
Heifers sell \$12/cwt back

Pickup Date: August 10-17
Slide/Shrink: 2% shrink and slide \$12/cwt topside only
Weigh: Hauled 4 miles, weighed on certified truck scales
Notice: 48-72 hours **Weaned:** No
Colors: 90% blk/bwf, 10% ch-x or red
Muscling: 90% #1, 10% #1.5
Flesh: Medium
Frame: Medium
Nutrition: On the momma cow on pasture with free choice mineral. Exposed to creep feeders from January 1-March
Vaccinations: Triangle 10 (2x), Endovac (2x), Vision 7 somnus w/ spur (2x)
Dewormer: Cydectin (3x) **Implants:** Synovex S (Steers only)
Genetics: 50-75% Angus, 25-50% Simmental. Sired by SimAngus bulls out of high percentage Angus-based cows.
Programs: No **Heifers Preg-Cheeked:** Open, not palpated.
Comments: A very good set of high-quality calves coming straight off the cow the morning of load out. Calves born last fall from October 28-December 30. Calves are out of very good genetics with several years of AI breeding in the cows as well. A partial load at about 38,000 lbs.
MACS Rep: Catherine Edwards, 704-550-7920

Programs:



Cattle that are picked up after the stated delivery dates will be subject to a 2# per day increase on the base weight and any weight stops for each day late after the last stated delivery date.

Lot 4255 1 Load of STRS/HFRS

Price: \$ _____ Buyer # _____

Catawba Cattlemen's Alliance (Harris, Frye, Smyre)
Catawba, NC - 15 miles west of Statesville, NC



Home-Raised, Verified Natural, Backgrounded, Weaned, BQA Certified

~36 Steers Wt: 780 lbs. Wt. Stop: 815 lbs. Variance: 215 lbs.
~33 Hfrs Wt: 720 lbs. Wt. Stop: 755 lbs. Variance: 130 lbs.
Heifers sell \$12/cwt back

Pickup Date: August 12-16
Slide/Shrink: 1% shrink and slide \$10/cwt topside only
Weigh: Hauled 10-20 miles, weighed on the ground on certified scales
Notice: 48-72 hours **Weaned:** 75-90+ days
Colors: 100% blk/bwf
Muscling: 95% #1, 5% #1.5
Nutrition: Hand fed 14% CPC commodity feed or TMR with free choice mineral, pasture, and hay.
Vaccinations: Vista Once SQ (1x), Vista 5 (1x), Vision 7 somnus (1x), Vision 7 spur (1x), Endovac (2x), Multimin, Pinkeye
Dewormer: LongRange, Safeguard **Implants:** None
Genetics: 50-75%+ Angus. Sired by Angus or SimAngus bulls out of Angus-x-Continental cows.
Programs: BeefTraxx Verified Natural; NHTC; SAV; Affidavit **Heifers Preg-Checked:** Open, not palpated.
Comments: Broke to bunks and waters. A very good set of calves from the Catawba Alliance group. These calves were born last fall with just 3 producers on this load, with birthdates and records on all calves. These calves are EID tagged for Verified Natural and NHTC through BeefTraxx. Will also sign buyer's natural affidavits as needed.
MACS Rep: Jimmy Dagenhart, 704-425-3587

Flesh: Medium
Frame: Medium

Programs:



Lot 4256 1 Load of STRS/HFRS

Price: \$ _____ Buyer # _____

Catawba Cattlemen's Alliance (Teague, Hunsucker)
Catawba, NC - 15 miles west of Statesville, NC



Home-Raised, Verified Natural, Backgrounded, Weaned, BQA Certified

~35 Steers Wt: 750 lbs. Wt. Stop: 785 lbs. Variance: 215 lbs.
~36 Hfrs Wt: 725 lbs. Wt. Stop: 760 lbs. Variance: 230 lbs.
Heifers sell \$12/cwt back

Pickup Date: August 12-16
Slide/Shrink: 1% shrink and slide \$10/cwt topside only
Weigh: Hauled 15 miles, weighed on the ground on certified scales
Notice: 48-72 hours **Weaned:** 75-90+ days
Colors: 98% blk/bwf, 1 hd ch-x
Muscling: 90% #1, 10% #1.5
Nutrition: Hand fed silage based TMR with free choice mineral and hay.
Vaccinations: Vista Once SQ (1x), Vista 5 (1x), Vision 7 somnus (1x), Vision 7 (1x)
Dewormer: Dectomax, Safeguard **Implants:** None
Genetics: 50-75%+ Angus. Sired by Angus or SimAngus bulls out of Angus-x-Continental cows.
Programs: BeefTraxx Verified Natural; NHTC; SAV; Affidavit **Heifers Preg-Checked:** Open, not palpated.
Comments: Broke to bunks and waters. Another good set of calves from the Catawba Alliance group. These calves were born last fall with just 2 producers on this load, and all calves have been weaned at the same location. These calves are EID tagged for Verified Natural and NHTC through BeefTraxx. Will also sign buyer's natural affidavits as needed.
MACS Rep: Jimmy Dagenhart, 704-425-3587

Flesh: Medium
Frame: Medium

Programs:



Cattle that are picked up after the stated delivery dates will be subject to a 2# per day increase on the base weight and any weight stops for each day late after the last stated delivery date.

Lot 4257 1 Load of STRS/HFRS

Price: \$ _____ Buyer # _____

Rockingham Cattlemen's Alliance
Ruffin, NC - 30 miles northeast of Greensboro, NC



Home-Raised, Affidavit Natural, Backgrounded, Weaned, BQA Certified
~46 Steers Wt: 760 lbs. Wt. Stop: 795 lbs. Variance: 215 lbs.
~20 Hfrs Wt: 760 lbs. Wt. Stop: 795 lbs. Variance: 170 lbs.
Heifers sell \$15/cwt back

Pickup Date: August 12-20
Slide/Shrink: 1% shrink and slide \$10/cwt topside only
Weigh: Hauled 5-20 miles, weighed on certified ground scales
Notice: 48 hours **Weaned:** 60+ days
Colors: 70% blk/bwf, 30% char-x
Muscling: 90% #1, 10% #1.5
Flesh: Medium
Frame: Medium
Nutrition: Bunk fed commodity feed with free choice pasture, mineral, and hay
Vaccinations: Bovi-Shield Gold One Shot (2x), UltraChoice 7 (2x)
Dewormer: Safeguard (1x), Ivermectin (1x) **Implants:** None
Genetics: 50-75% Angus. Sired by registered Angus or Charolais bulls out of black Angus or baldie cows.
Programs: Seller Affidavit **Heifers Preg-Cheeked:** Open, not palpated.
Comments: Broke to bunks and waters. All producers are BQA certified. All alliance producers use the same vaccination and management protocols with similar genetics. Calves were double vaccinated with the second round given 21-28 days prior to the sale. Calves qualify as all natural and sellers will sign buyer's natural affidavits as needed.
MACS Rep: Marcus Harward, 704-322-0840

Programs:   

Lot 4258 1 Load of STRS/HFRS

Price: \$ _____ Buyer # _____

Wes Knight Farms
Honea Path, SC - 20 miles south of Greenville, SC



Home-Raised, GAP-4, CARE, Verified Natural, NHTC, Backgrounded, Weaned
~46 Steers Wt: 790 lbs. Wt. Stop: 825 lbs. Variance: 150 lbs.
~19 Hfrs Wt: 750 lbs. Wt. Stop: 785 lbs. Variance: 150 lbs.
Heifers sell \$12/cwt back

Pickup Date: August 19-23
Slide/Shrink: 1% shrink and slide \$10/cwt topside only
Weigh: Hauled 5 miles, weighed on certified truck scales
Notice: 48 hours **Weaned:** 75+ days
Colors: 63 hd blk/bwf, 2 hd ch-x
Muscling: 95% #1, 5% #1.5
Flesh: Medium
Frame: Medium
Nutrition: Bunk fed 8-10# ph/pd of 13% CPC Grower with free choice Purina mineral, pasture, and hay
Vaccinations: Vista Once (2x), Vision 7 somnus (2x), Triangle 10 (1x)
Dewormer: Safeguard (1x), Dectomax (1x) **Implants:** None
Genetics: 75% or more Angus. Sired by Yon Angus bulls with high marbling and \$B out of high % Angus cows. Angus Verified sires with IMI Global. **Genetic Merit Beef Score of 161.**
Programs: GAP-4; Beef CARE; IMI Verified Natural; NHTC; SAV; Affidavit; Angus Verified **Heifers Preg-Cheeked:** Open, not palpated.
Comments: Broke to bunks and waters. Born last fall, Sep-Nov 2023. EID tagged. A docile, fancy set of calves that are GAP certified, verified natural, and NHTC with GAP certificate transferring at no cost to buyer (GAP#21074; Exp 10/16/24). Calves are also BeefCARE certified and AngusLink with very good genetics behind them and good genetic merit scores.
MACS Rep: David Landreth, 864-444-8214

Programs:          

Cattle that are picked up after the stated delivery dates will be subject to a 2# per day increase on the base weight and any weight stops for each day late after the last stated delivery date.

Lot 4259 0.9 Load of STRS/HFRS

Price: \$ _____ Buyer # _____

Hall Farm (Todd Hall)
Leesville, SC - 40 miles west of Columbia, SC



Home-Raised, GAP-4, Verified Natural, NHTC, Backgrounded, Weaned

~30 Steers Wt: 800 lbs. Wt. Stop: 835 lbs. Variance: 150 lbs.
~26 Hfrs Wt: 750 lbs. Wt. Stop: 785 lbs. Variance: 150 lbs.
Heifers sell \$10/cwt back

Pickup Date: August 19-23
Slide/Shrink: 2% shrink and slide \$10/cwt topside only
Weigh: Certified MACS ground scales at farm
Notice: 48-72 hours **Weaned:** 75+ days
Colors: 100% blk/bwf
Muscling: 95% #1, 5% #1.5
Nutrition: Bunk fed 10-12# ph/pd of 14% CPC feed with free choice Purina hi-mag mineral, pasture, and hay.
Vaccinations: Vista Once (2x), Vision 7 somnus (2x), Endovac (2x)
Dewormer: Safeguard (1x), Eprinex (1x) **Implants:** None
Genetics: 75% or more Angus. Sired by Angus bulls (most from Yon Family Farms) and out of Angus-X and Sim Angus-X cows.
Programs: GAP-4; BeefTraxx Verified Natural; NHTC; SAV; Affidavit **Heifers Preg-Checked:** Not palpated*
Comments: Broke to bunks and waters. Born last fall. A fancy set of calves that are GAP certified, verified natural, and EID tagged. GAP certificate can transfer at no cost to buyer and will sign natural affidavits as needed. Heifers do not sell with a bred heifer refund guarantee but all heifers should be open.
MACS Rep: David Landreth, 864-444-8214

Flesh: Medium
Frame: Medium



Lot 4260 1 Load of STRS/HFRS

Price: \$ _____ Buyer # _____

Chriscoe Farm & Summers Farm
Asheboro, NC - 40 miles south of Greensboro, NC



Affidavit Natural, Backgrounded, Weaned

~32 Steers Wt: 875 lbs. Wt. Stop: 910 lbs. Variance: 150 lbs.
~24 Hfrs Wt: 850 lbs. Wt. Stop: 885 lbs. Variance: 150 lbs.
Heifers sell \$12/cwt back

Pickup Date: August 12-16
Slide/Shrink: 2% shrink and slide \$10/cwt topside only
Weigh: Certified ground scales at farm
Notice: 48 hours **Weaned:** 90+ days
Colors: 80% blk/bwf, 20% ch-x or red
Muscling: 95% #1, 5% #1.5
Nutrition: Bunk fed haylage and TMR (wet corn gluten, cotton) with access to mineral, hay, and pasture.
Vaccinations: Vista 5 or Bovi-Shield Gold One Shot (2x), Nuplura (1x), Vision 7 (1x), Pinkeye (1x)
Dewormer: Ivomec (2x) **Implants:** None
Genetics: Commercial Angus-based. Mainly sired by Angus and SimAngus bulls or a few Charolais bulls.
Programs: Seller Affidavit **Heifers Preg-Checked:** Yes - palpated open
Comments: Broke to bunks and waters. Reputational calves coming from Donald Chriscoe Farm and Summers Farm, brought together the week of load out. Calves are all-natural and will sign buyer's natural affidavits.
MACS Rep: Marcus Harward, 704-322-0840

Flesh: Medium
Frame: Medium



Cattle that are picked up after the stated delivery dates will be subject to a 2# per day increase on the base weight and any weight stops for each day late after the last stated delivery date.

Lot 4261 0.6 Load of STRS/HFRS

Price: \$ _____ Buyer # _____

Colon Roberts Farm

Tar Heel, NC - 25 miles south of Fayetteville, NC

Home-Raised, Backgrounded, Weaned

~29 Steers Wt: 675 lbs. Wt. Stop: 710 lbs. Variance: 350 lbs.
~19 Hfrs Wt: 575 lbs. Wt. Stop: 610 lbs. Variance: 350 lbs.
Heifers sell \$15/cwt back



Pickup Date: August 9-20

Slide/Shrink: 2% shrink and slide \$15/cwt topside only

Weigh: Hauled 5 miles, weighed on certified truck scales

Notice: 48+72 hours **Weaned:** 60+ days

Colors: 100% blk/bwf

Muscling: 20% #1, 80% #1.5

Nutrition: Complete 14% calf feed in self feeder with free choice mineral and hay.

Vaccinations: Bovi-Shield Gold One Shot (1x), Bovi-Shield Gold 5 (1x), Ultrabac 7 (2x)

Dewormer: Dectomax

Implants: None

Genetics: 50% Wagyu, 50% Angus. Sired by fullblood Wagyu bulls from the Itozakura bloodline and out of purebred and commercial Angus cows. May be a couple full blood Wagyu calves that were embryo calves.

Programs: Seller Affidavit

Heifers Preg-Chcked: Open, not palpated.

Comments: Broke to feeders and waters. These calves were bred to go into a Wagyu feeding program and will have very high marbling genetics with most of the calves finishing as very high Prime. The seller will also sign natural affidavits. There will be a few with scurs or small horns. Most of these calves will weigh from 400-750 lbs. There are some big calves in the video that will not go, most of the small calves will go. *A partial load at about 30,000 lbs.*

MACS Rep: Bruce Shankle, 704-694-8686

Programs:   

MID-ATLANTIC CATTLE SALES

WWW.MACSVIDEO.COM



UPCOMING SALES

August 6

August 20

September 3

September 17

October 1

October 15

November 5

November 19

Our motto - Working hard for you today and every day!

GRADED FEEDER CALF SALE

**THURSDAY
AUGUST 8, 2024**

Stanly County Livestock Market in Norwood, NC

Expecting 1,000+ head to sell

- ✓ Steers & Heifers
- ✓ Weaned 60+ Days
- ✓ Sale ear tags, no back tags
- ✓ Polled or Dehorned
- ✓ Heifers guaranteed open*

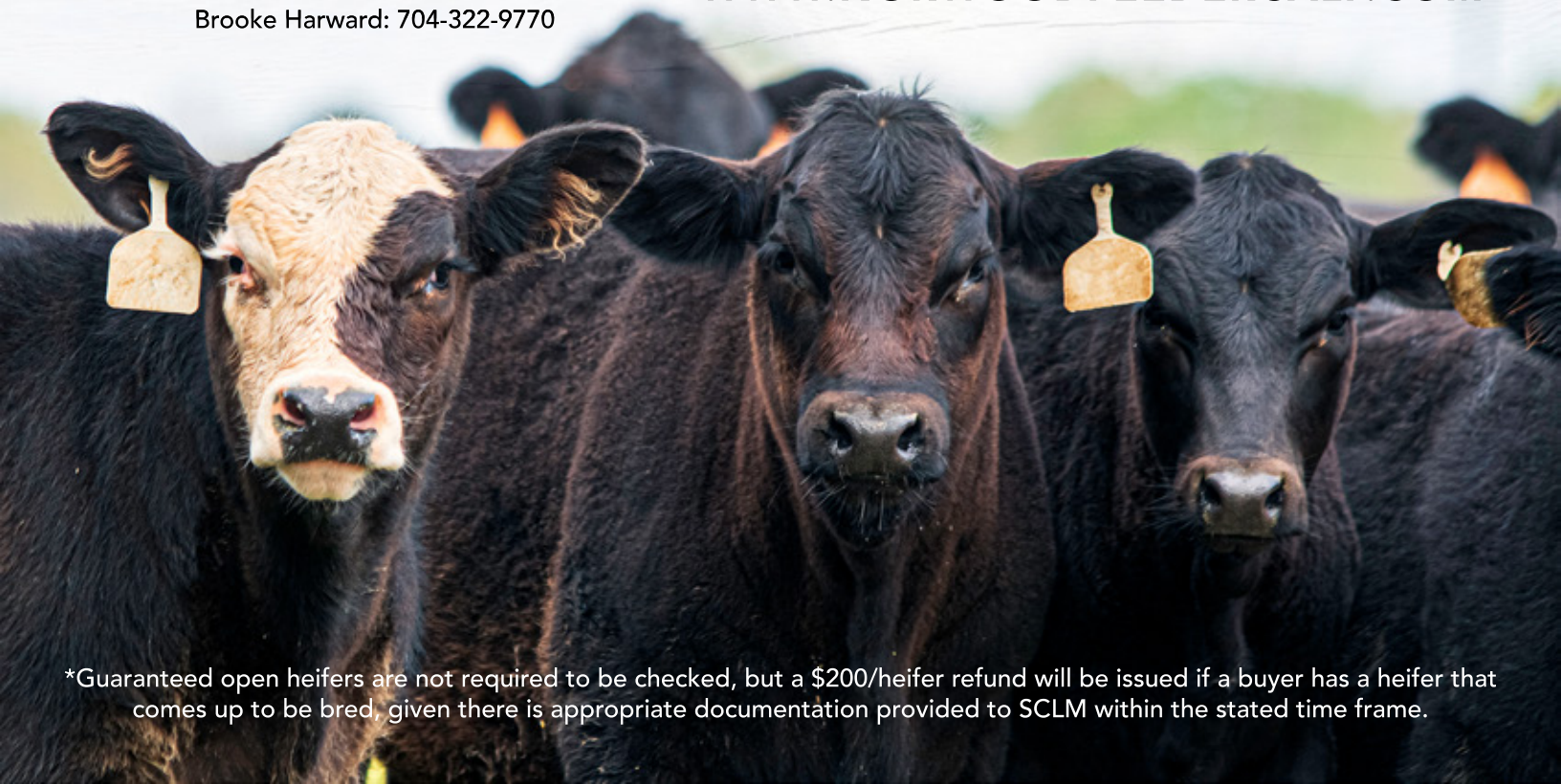
Cattle will be graded by NC Dept. of Ag. graders during the day and grouped into similar groups. We expect to have 5-9 truckloads to sell in addition to smaller groups. Contact Marcus or Brooke with any questions.

Marcus Harward: 704-322-0840
Brooke Harward: 704-322-9770

2 Rounds of vaccinations 21-90 days before the sale. Vaccine requirements:

- ✓ Two doses of a Respiratory Modified-Live Viral (MLV) vaccine for IBR-BVD-P13-BRSV
- ✓ At least one dose of Mannheimia Haemolytica (Pasteurella), can be given with MLV vaccine.
- ✓ Two doses of a Clostridial/Blackleg vaccine
- ✓ At least one dose of Haemophilus Somnus, can be given with blackleg vaccine
- ✓ At least one round of parasite control
- ✓ Implants are optional

WWW.NORWOODFEEDERCALF.COM



*Guaranteed open heifers are not required to be checked, but a \$200/heifer refund will be issued if a buyer has a heifer that comes up to be bred, given there is appropriate documentation provided to SCLM within the stated time frame.



To view the sale or bid online, visit www.DVAuction.com. Find the "Mid-Atlantic Cattle Sales (Richfield, NC)" sale and click on "Details." From this page you can view the catalog, videos, or log in to watch the sale. If you have an account, log in and view the sale. If you do not, you must create an account under the "Create New Account" tab in the upper left hand corner of the screen. You will need to confirm this account through your e-mail.

You DO NOT have to be approved for a buyer's number just to watch the sale but you will still need to create an account with DVAuction.



Mid-Atlantic Cattle Sales, LLC
28978 Misenheimer Rd. Richfield, NC 28137
info@macsvideo.com • www.MACSVideo.com

**Bonded through USDA Packers & Stockyards*

SALE TERMS AND CONDITIONS - PAGE 1 OF 2

MID-ATLANTIC CATTLE SALES, LLC

1. Each bidder must be pre-registered and have a Buyer Number to participate in the auction. To register for the auction call 704-322-9770, 704-322-0840, or register through DV Auction. By participating in the auction, the Buyer expressly agrees to adhere to these Terms and Conditions and to the provisions set forth in the Livestock Purchase Agreement sent after the auction. All cattle being offered for sale are under standard Contracts for Sale. All cattle are purchased under standard Contracts for Purchase by the Buyers.
2. The cattle offered for sale are indicated on the sale sheets or online sale description as described to the MACS representatives by the owner. They are described by lot numbers, seller, location of the cattle, numbers of head, estimated weight, management practices, delivery date, conditions of sale and delivery, and verified programs. Representatives for each load are listed under each respective lot. Every effort has been made to assure the correctness of this information but all announcements from the auctioneer or official auction staff prior to or during the sale shall take precedence over printed matter herein.
3. Auction bids will be taken as voice bids by telephone and in person or online bids through DV Auction. Bids are asked with each lot of cattle and will be sold to the highest bidder on the basis of estimated weight. Seller reserves the right to "no sale" the load lot(s) of their cattle at the time the highest bid is made as long as the "no sale" announcement is made prior to the next lot being sold. Any departure from this procedure will be announced and all announcements made from the auctioneer or official auction staff will take precedence over printed matter herein.
4. The Auctioneer reserves the right to reject any and all bids. Auctioneer will settle all disputed bids. If a dispute arises between two or more bidders, the Auctioneer may immediately put the lot up for sale again and resell to the highest bidder. The decision of the Auctioneer shall be final and absolute.
5. One full load of stocker or feeder cattle will be contracted for approximately 48,000 lbs. and the respective head count at the base weight at the full truckload weight. No freight adjustment will be given if the average weight at delivery is under the base weight and the head count delivered is within 95% of the contracted head count. Mid-Atlantic Cattle Sales and its representatives will act as agents only in the sale of lots of cattle. As the marketing agency we cannot guarantee a minimum or maximum amount of shrink on any load. Any weight guarantees in regard to shrink must be given by Seller. Mid-Atlantic Cattle Sales cannot guarantee off truck weights.
6. Cattle that are picked up after the stated delivery dates will be subject to a 2# per head per day increase on the base weight and any weight stops for each day late after the last stated delivery date. Any deviation from this 2# per head per day will be posted in the catalog and announced on sale day.
7. Most loads have weight stops at 25-50 lbs. over the base weight. The individual weight stops are posted on each lot. If a weight stop is listed, cattle will slide after shrink up to the posted weight stop and be sold on a total net weight at the posted weight stop. Any pounds after shrink over the weight stop will not be billed to the buyer or paid to the seller unless other arrangements have been made in writing.
8. All cattle will be sold on a sliding scale as listed on each load. The "price slide" will go into effect when the average net weight of the live cattle is over the base weight the cattle are sold at. This will go into effect starting at 1 pound over the base weight.
Slide Example: The cattle were sold at a base weight of 700 lbs with a \$5/cwt topside slide for \$150/cwt and at delivery weighed 725 lbs after shrink. The cattle would slide \$1.25 for a new price of \$148.75 at 725 lbs.
[Slide (\$5/cwt) X Pounds Over (25) = \$1.25/cwt] Also can be shown as $[\$5 / 100 \times 25 = \$1.25]$
9. On split loads the heifer price will be \$___/cwt (as stated in the lot information) back of the original price of the steers. The steers will be based at their purchase price and base weight and the heifers will be based at their purchase price and base weight. At delivery, slides and weight stops will be calculated separately on each group.

SALE TERMS AND CONDITIONS - PAGE 2 OF 2

MID-ATLANTIC CATTLE SALES, LLC

- 10.** The Buyer is responsible for all arrangements and regulatory requirements with respect to the transportation of the livestock and the Buyer is responsible for sending trucks to adequately load the number of head and/or the total weight contracted in order to legally transport them to their final destination. Cattle sold will be sorted and delivered to the stated weigh point by the Seller and weighed on a certified scale. Buyer will receive the cattle at point of weighing under conditions as stated with respect to each lot. Buyer will take ownership of the cattle at the point of loading.
- 11.** Health entry requirements for the state of entry are the responsibility of the Buyer. The Seller will furnish any health certificates required for the state of origin and Federal Law at the request of the buyer. If additional health certificates, documentation or tests are required for shipment to the Buyer's destination, it shall be at the Buyer's request and expense.
- 12.** Any heifer that is sold as guaranteed open and is determined to be bred by the buyer will receive a \$200 per bred heifer refund given appropriate documentation is provided within 90 days (updated) of the cattle being delivered. Documentation must include lot information, heifer identification, and veterinarian documentation. **UPDATE: Effective July 1, 2024 all heifer loads, unless explicitly stated in the catalog, are sold with a 90-day bred heifer refund guarantee. The catalog will explicitly state if heifers have been checked for pregnancy prior to delivery so that the buyer can plan accordingly.**
- 13.** Payment by Buyer is due and payable in accordance with USDA P&S prompt pay policy upon delivery of the cattle and at such times as the value of the cattle is determined based on weight (subject to condition), price (subject to condition), and any other conditions stated at time of sale. Payment must be sent to Mid-Atlantic Cattle Sales within 1 day after the cattle are received by the Buyer. We request that all payments be sent by Wire Transfer, ACH, or overnight delivery of a check via FedEx or UPS. Payment sent via the U.S. Postal Service (1st Class or Priority Mail) are expected to be received within 7 business days of delivery. Any fees incurred for sending payment will be at the Buyer's expense.
- 14.** Mid-Atlantic Cattle Sales does not warrant the harvest date on source and age verified cattle and cannot guarantee back verification on any program requiring signed affidavits or 3rd party verification. Mid-Atlantic Cattle Sales will make all efforts to ensure verifications are met, but it is the Buyer's responsibility to verify all claims of the Seller to fit specific programs prior to purchase.
- 15.** There are no implied warranties of merchantability or fitness for a particular purpose on any livestock sold. Seller does not warrant that the livestock are free from any latent defect, condition, sickness, or disease. Seller does not assume responsibility for any loss after the livestock are delivered, which results from any latent defect, condition, sickness, or disease.



Marcus Harward: 704-322-0840
Brooke Harward: 704-322-9770

info@macsvideo.com
www.MACSvideo.com

28978 Misenheimer Rd • Richfield, NC 28137