

# MID-ATLANTIC CATTLE SALES

*A family owned and operated livestock video auction  
with 30+ years of livestock marketing experience.*

---

# NOVEMBER 2, 2021

## TUESDAY AT 1:00 PM EDT

[WWW.MACSVIDEO.COM](http://WWW.MACSVIDEO.COM)



**Mid-Atlantic Cattle Sales, LLC**  
28978 Misenheimer Rd. Richfield, NC 28137  
704-322-0840 • 704-322-9770  
[info@macsvideo.com](mailto:info@macsvideo.com)

**DVAuction**  
Broadcasting Real-Time Auctions

# Video Sale INFORMATION

The cattle offered for sale are indicated on the following sale sheets and the online sale description as described to the MACS representatives by the owner. They are described by lot numbers, seller, location of cattle, numbers of head, estimated weight, management practices, delivery date, conditions of sale and delivery, and verified programs. Representatives for each load are listed under each respective lot. Every effort has been made to assure the correctness of this information but all announcements from the auctioneer or official auction staff prior to or during the sale shall take precedence over printed matter herein.

## SALE DATE & TIME:

Tuesday - November 2, 2021  
1:00 pm edt. | 12:00 pm cdt.

## CONTACT:

Marcus Harward .....704-322-0840  
Brooke Harward .....704-322-9770  
See our website for MACS representatives' contact information.

## WEBSITES:

[www.MACSvideo.com](http://www.MACSvideo.com)

View catalog, videos, and additional updates online on our website.

[www.vimeo.com/macsvideo](http://www.vimeo.com/macsvideo)

All videos of sale cattle are posted directly on our video page listed above.

## Bidding Options

*We want to offer you the best opportunities we can to participate in our sales each month. Below are three options for bidding on the sale.*

### 1. CONFERENCE CALL

After 12:45 eastern on sale day, you can call the auction number to listen and bid on the sale. To bid during the sale, you will use your buyer number to bid on the lot. Contact Marcus or Brooke prior to the sale to receive a buyer's number. *Please keep background noise to a minimum as we will have multiple people on the line. To mute your phone, press \*6. To un-mute, press \*6 again.*

**CALL-IN NUMBER: 1-866-906-9888**

**PASSCODE: 9461720 #**

### 2. DV AUCTION - INTERNET VIEWING AND BIDDING



To view the sale or bid online, visit [www.DVAuction.com](http://www.DVAuction.com). Find the "Mid-Atlantic Cattle Sales (Richfield, NC)" sale and click on "Details." From this page you can view the catalog, videos, or log in to watch the sale. If you have an account, log in and view the sale. If you do not, you must create an account under the "Create New Account" tab in the upper left hand corner of the screen. You will need to confirm this account through your e-mail. *It is best to do this at least a day before the sale.*

**You DO NOT have to be approved just to watch the sale but you will still need to create an account with DVAuction. To register for a buyer's number, call Brooke at 704-322-9770 prior to the sale to be approved to bid online.**

### 3. ABSENTEE BIDDING

For people who can not view or bid on the sale at sale time, we have can handle closed bids in house and assist you with absentee bidding. Contact Marcus at 704-322-0840 for more information.

*"The steadfast love of the Lord never ceases; his mercies never come to an end; they are new every morning: great is your faithfulness."*

**LAMENTATIONS 3:22-23**



# TABLE OF CONTENTS

## TUESDAY - NOVEMBER 2, 2021 - 1:00 PM

Video Sale Information						PG 2
Table of Contents						PG 3
DV Auction Online Bidding						PG 4
Lot 1402	1 Load	Steers	625 lbs.	WP LLC		VA PG 5
Lot 1403	0.9 Load	Steers	685 lbs.	Bounds Farm *GAP		GA PG 5
Lot 1404	1 Load	Steers	700 lbs.	Donald Chriscoe Farm *		NC PG 6
Lot 1405	1 Load	Steers	700 lbs.	Wester Farms		NC PG 6
Lot 1406	1 Load	Steers	750 lbs.	HRW Farms *GAP VNB NHTC		NC PG 7
Lot 1407	1 Load	Steers	790 lbs.	Driggers Cattle Company *GAP		SC PG 7
Lot 1408	1 Load	Steers	790 lbs.	Second Chance Farms Inc *GAP VNB NHTC		NC PG 8
Lot 1409	2 Loads*	Steers	800 lbs.	Rocking H Cattle Co *GAP VNB NHTC CARE		NC PG 8
Lot 1410	2 Loads	Steers	825 lbs.	HRW Farms *GAP VNB NHTC		NC PG 9
Lot 1411	1 Load	Heifers	700 lbs.	Donald Chriscoe Farm *		NC PG 10
Lot 1412	1 Load	Heifers	700 lbs.	WDC Co		NC PG 10
Lot 1413	1 Load	Heifers	740 lbs.	HRW Farms *GAP VNB NHTC		NC PG 11
Lot 1414	2 Loads	Heifers	775 lbs.	HRW Farms *GAP VNB NHTC		NC PG 11
Lot 1415	1 Load	Steers	740 lbs.	Griffin Farms *GAP		NC PG 12
		Heifers	700 lbs.			
Lot 1416	1 Load	Steers	730 lbs.	Big "O" Farms *GAP		GA PG 12
		Heifers	665 lbs.			
Upcoming Sale Dates						PG 13
Leachman East Coast Stabilizer Sale						PG 14
SimAngus Solution Bull Sale						PG 15
Select Sires						PG 16
Sale Terms & Conditions						PG 17

* = All-Natural	GAP= GAP Certified	VNB= Verified Natural	NE3 =NeverEver 3
NHTC= Non-Hormone Treated	CARE= BeefCARE Certified		

Most loads have weight stops at 25-50 lbs. over the base weight.

**UPDATE:** The individual weight stops are posted on each lot. Cattle that are picked up after the stated delivery dates will be subject to a **2# PER DAY** increase on the base weight and any weight stops for each day late after the last stated delivery date.



To view the sale or bid online, visit [www.DVAuction.com](http://www.DVAuction.com). Find the "Mid-Atlantic Cattle Sales (Richfield, NC)" sale and click on "Details." From this page you can view the catalog, videos, or log in to watch the sale. If you have an account, log in and view the sale. If you do not, you must create an account under the "Create New Account" tab in the upper left hand corner of the screen. You will need to confirm this account through your e-mail.

You DO NOT have to be approved for a buyer's number just to watch the sale but you will still need to create an account with DVAuction.



Mid-Atlantic Cattle Sales, LLC  
28978 Misenheimer Rd. Richfield, NC 28137  
[info@macsvideo.com](mailto:info@macsvideo.com) • [www.MACSVideo.com](http://www.MACSVideo.com)

*\*Bonded through USDA Packers & Stockyards*

**Lot 1402 1 Load of STEERS**

Price: \$ \_\_\_\_\_ Buyer # \_\_\_\_\_

**WP LLC (Milton)**  
Elliston, VA - 15 miles northeast of Christiansburg, VA

**Home-Raised, Backgrounded, Weaned**

**Base Weight: 625 lbs. Wt. Stop: 660 lbs. Variance: 150 lbs.**

**Pickup Date:** November 4-12 **Estimated Head Count** 78

**Slide/Shrink:** No shrink and slide \$8/cwt topside only

**Weigh:** Hauled 20 miles to Christiansburg L/S Mkt and weighed on certified ground scales

**Notice to load:** 48-72 hours **Weaned:** 80+ days

**Colors:** 88% blk/bwf, 5-6 hd ch-x, 2-3 hd red/rwf

**Muscling:** 90% #1, 10% #1.5

**Nutrition:** Hand fed 3# Purina Precon on free choice hay, mineral, pasture, and Purina Accuration tub.

**Vaccinations:** Pyramid 5 + Presponse (1x), Titanium (1x), One Shot BVD (1x), Alpha 7 (1x), Vision 7 20/20 (1x)

**Dewormer:** Cydectin Inject (2x) **Implants:** Synovex (1x)

**Genetics:** Sired by Angus and SimAngus bulls out of mostly high percentage Angus cows.

**Natural Status:** No

**Comments:** Broke to bunks and waters. Docile calves being hand fed just a little to keep them coming up, mainly just carrying a grass flesh. 100 head to sort the load out of - no Hereford or pink-nose Chars.

**MACS Rep:** Kenny Nolen, 540-230-8642

**Programs:**



**Flesh:** Medium/Light

**Frame:** Medium

**Lot 1403 0.9 Load of STEERS**

Price: \$ \_\_\_\_\_ Buyer # \_\_\_\_\_

**Bounds Farms (John Bounds)**  
Washington, GA - 50 miles northwest of Augusta, GA

**Home-Raised, GAP-4, Natural, Backgrounded, Weaned, BQA Cert.**

**Base Weight: 685 lbs. Wt. Stop: 720 lbs. Variance: 150 lbs.**

**Pickup Date:** November 8-12 **Estimated Head Count** 64

**Slide/Shrink:** 2% shrink and slide \$7/cwt topside only

**Weigh:** Certified ground scales at farm

**Notice to load:** 48 hours **Weaned:** 60+ days

**Colors:** 95% blk/bwf, 5% red

**Muscling:** 95% #1, 5% #1.5

**Nutrition:** Bunk fed 8-10# of 14% Oglethorpe grower feed with free choice mineral, pasture, and hay.

**Vaccinations:** Bovi-Shield Gold One Shot (2x), Vision 7 w/ somnus (2x)

**Dewormer:** LongRange (1x) **Implants:** None

**Genetics:** Sired by Angus bulls from UGA bull test out of mainly Angus & SimAngus cows.

**Natural Status:** GAP-4; Seller Affidavit

**Comments:** Broke to bunks, waters, and a hot wire fence. A docile, fancy set of calves all born last fall. GAP certificate owned by Pineland Farms, can transfer at buyers expense. (GAP:Pineland; Exp. 7/24/22)

**MACS Rep:** David Landreth, 864-444-8214

**Programs:**



**Flesh:** Medium

**Frame:** Medium

**Lot 1404 1 Load of STEERS**

Price: \$ \_\_\_\_\_ Buyer # \_\_\_\_\_

**Donald Chriscoe Farm**  
Asheboro, NC - 40 miles south of Greensboro, NC

**Affidavit Natural, Backgrounded, Weaned**

**Base Weight: 700 lbs. Wt. Stop: 735 lbs. Variance: 150 lbs.**

**Pickup Date:** November 3-12 **Estimated Head Count** 69

**Slide/Shrink:** 2% shrink and slide \$5/cwt topside only

**Weigh:** Certified ground scales at farm

**Notice to load:** 24-48 hours **Weaned:** 90+ days

**Colors:** 90% blk/bwf, 10% red or ch-x (exact colors announced sale day) **Flesh:** Medium

**Muscling:** 95% #1, 5% #1.5 **Frame:** Medium

**Nutrition:** Bunk fed haylage and DDG TMR with access to mineral, hay, and pasture

**Vaccinations:** Vista 5 (2x), Nuplura (1x), Vision 7 20/20 (1x), Ocuguard Pinkeye (1x)

**Dewormer:** Ivomec Inject. (2x) **Implants:** None

**Genetics:** Angus-X commercial. Mainly sired by Angus and SimAngus bulls.

**Natural Status:** Seller Affidavit

**Comments:** Broke to bunks and waters. Reputational calves purchased from local producers and backgrounded at Chriscoe's for 90+ days. Owner affidavit natural - signed Meyer's affidavits from original producers.

**MACS Rep:** Marcus Harward, 704-322-0840

**Programs:**   



**Lot 1405 1 Load of STEERS**

Price: \$ \_\_\_\_\_ Buyer # \_\_\_\_\_

**Wester Farms**  
Louisburg, NC - 30 miles northeast of Raleigh, NC

**Home-Raised, Backgrounded, Weaned, BQA Certified**

**Base Weight: 700 lbs. Wt. Stop: 735 lbs. Variance: 150 lbs.**

**Pickup Date:** November 4-13 **Estimated Head Count** 69

**Slide/Shrink:** 2% shrink and slide \$5/cwt topside only

**Weigh:** Hauled 10 miles, weighed on the truck

**Notice to load:** 48 hours **Weaned:** 90+ days

**Colors:** 95% blk/bwf, 5% red **Flesh:** Medium

**Muscling:** 95% #1, 5% #1.5 **Frame:** Medium

**Nutrition:** Bunk fed TMR of corn silage, corn gluten, cotton by product, veg scraps, rumensin with free choice mineral, pasture, and hay

**Vaccinations:** KCH Market Ready Program - Pyramid 5 + Presponse (1x), Pyramid 5 (1x), Caliber 7 (2x), Inforce 3 (1x), Multimin (1x)

**Dewormer:** Dectomax, Safeguard **Implants:** Synovex S

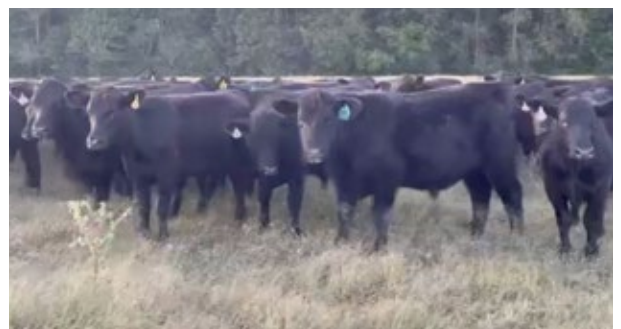
**Genetics:** 50-75% Angus - Sired by Angus, SimAngus, or Balancer bulls out of Angus, SimAngus, or Balancer based cows.

**Natural Status:** No

**Comments:** Broke to bunks and waters. Born last fall. An excellent set of high growth steers from a reputational program that will feed and finish well as a big set of feeders.

**MACS Rep:** Catherine Edwards, 704-550-7920

**Programs:**   



STEERS

**Lot 1406** 1 Load of STEERS

Price: \$ \_\_\_\_\_ Buyer # \_\_\_\_\_

**HRW Farms #2**  
Thurmond, NC - 10 miles north of Elkin, NC



**Home-Raised, GAP-4, Verified Natural, Backgrounded, Weaned**

**Base Weight: 750 lbs. Wt. Stop: 785 lbs. Variance: 150 lbs.**

**Pickup Date:** November 15-19 **Estimated Head Count** 65  
**Slide/Shrink:** 2% shrink and slide \$5/cwt topside only  
**Weigh:** Certified ground scales at farm  
**Notice to load:** 48 hours **Weaned:** 90+ days

**Colors:** 20% blk/bwf, 80% char-x **Flesh:** Medium  
**Muscling:** 95% #1, 5% #1.5 **Frame:** 90% Med, 10% Large  
**Nutrition:** Bunk fed 15# ph/pd of 14% feed and silage with free choice mineral and hay and on a 10 acre pasture.  
**Vaccinations:** Bovi-Shield Gold One Shot (1x), Bovi-Shield Gold 5 (1x), Alpha 7 (1x), Vision 7 20/20 (1x)

**Dewormer:** Dectomax **Implants:** None  
**Genetics:** Sired by Charolais, Angus, and SimAngus bulls out of crossbred cows. All chars are crossbred with a black nose or gray/yellow, no purebred pink-noses.

**Natural Status:** GAP-4; IMI Verified Natural; NHTC; Source & Age; Seller Affidavit. (GAP#15901; Exp. 3/19/22)

**Comments:** Broke to bunks and waters. Home-raised, high-growth steers with Charolais and Angus genetics. Reputational calves from a very good program. Certifications can transfer at no cost. Will be EID tagged prior to shipment if needed.

**MACS Rep:** Marcus Harward, 704-322-0840



**Lot 1407** 1 Load of STEERS

Price: \$ \_\_\_\_\_ Buyer # \_\_\_\_\_

**Driggers Cattle Co (JR, Jamie, & Colton Driggers)**  
Hamer, SC - 35 miles northeast of Florence, SC



**Home-Raised, GAP-4, Natural, Backgrounded, Weaned, BQA Cert.**

**Base Weight: 790 lbs. Wt. Stop: 825 lbs. Variance: 125 lbs.**

**Pickup Date:** November 15-19 **Estimated Head Count** 61  
**Slide/Shrink:** 2% shrink and slide \$5/cwt topside only  
**Weigh:** Hauled 5 miles, weighed on the truck  
**Notice to load:** 48 hours **Weaned:** 90+ days

**Colors:** 59 hd blk/bwf, 2-3 hd char-x **Flesh:** Medium  
**Muscling:** 95% #1, 5% #1.5 **Frame:** Medium  
**Nutrition:** 8-10% silage TMR w/ 2-3# of corn (started last 30 days). Free choice hay, pasture, and **VitaFerm Gain Smart** mineral.  
**Vaccinations:** Bovi-Shield Gold One Shot (1x), CattleMaster Gold FP5 (1x), Ultrabac 7 (2x), Ocuguard (2x)

**Dewormer:** Safeguard (1x), Dectomax Inject (1x) **Implants:** None  
**Genetics:** 60-85% Angus. All are Angus-sired by high-performing Angus bulls from Yon Family Farms and Cooper Angus (all registration #s available). Sires rank in the top 30% for YW growth, top 20% for Marbling, and top 20% for \$Beef. Majority of dams are Angus-based and were raised at the farm. Baldies are F-1 Hereford x Angus.

**Natural Status:** GAP-4; Seller Affidavit. (GAP:Pineland; Exp. 11/26/21. Renewal scheduled.)

**Comments:** Broke to bunks and waters. A docile, fancy set of calves all born last fall with birth & performance records on all calves. An excellent set of growth and feeding genetic calves-focused on growth and carcass traits for several generations. GAP certificate owned by Pineland Farms, can transfer at buyers expense.

**MACS Rep:** Marcus Harward, 704-322-0840



**Lot 1408 1 Load of STEERS**

Price: \$ \_\_\_\_\_ Buyer # \_\_\_\_\_

**Second Chance Farms Inc**  
Pink Hill, NC - 30 miles southeast of Goldsboro, NC

Home-Raised, GAP-4, Verified Natural, Backgrounded, Weaned, BQA

**Base Weight: 790 lbs. Wt. Stop: 830 lbs. Variance: 150 lbs.**

**Pickup Date:** December 2-10 **Estimated Head Count** 60

**Slide/Shrink:** 1% shrink and slide \$5/cwt topside only

**Weigh:** Hauled 15 miles, weighed on certified truck scales

**Notice to load:** 48 hours **Weaned:** 90+ days

**Colors:** 97% blk/bwf, 1-2 hd ch-x or red

**Muscling:** 95% #1, 5% #1.5

**Nutrition:** Bunk fed TMR (haylage, soyhulls, corn gluten) with calcium and minerals and on grass lots.

**Vaccinations:** Vista Once (2x), Vision 7 (2x), Multimin (1x)

**Dewormer:** Safeguard (1x), Dectomax Pour-On (1x) **Implants:** None

**Genetics:** 50-60% Angus, 40-50% Sim. Sired by SimAngus bulls from Gibbs Farms & Fred Smith out of Angus-based and SimAngus cows. All sires are in the top 25% for TI (Terminal Index) with most in the top 25% for Marbling and Yearling Weight. Sires include Triple Crown, Mountaineer, Premier, Statement, Ultrasound, and more.

**Natural Status:** GAP-4; BeefTraxx Verified Natural; NHTC; Source & Age; Seller Affidavit. (GAP#16051; Exp. 9/28/22)

**Comments:** Broke to bunks and waters. An excellent, fancy set of calves that are very docile. Natural certifications are complete and will transfer at no cost. Steers are EID Tagged. Last 2 years calves have averaged 95% Prime & Choice.

**MACS Rep:** Marcus Harward, 704-322-0840

**Programs:**



**Flesh:** Medium

**Frame:** Medium

**Lot 1409 2 Loads\* of STEERS**

Price: \$ \_\_\_\_\_ Buyer # \_\_\_\_\_

**Rocking H Cattle Company**  
Gold Hill, NC - 40 miles northeast of Charlotte, NC

Home-Raised, GAP-4, Verified Natural, BeefCare, NHTC, BQA

**Base Weight: 800 lbs. Wt. Stop: 835 lbs. Variance: 150 lbs.**

**Pickup Date:** November 8-19 **Estimated Head Count** 121

**Slide/Shrink:** 2% shrink and slide \$5/cwt topside only

**Weigh:** Certified ground scales at farm

**Notice to load:** 24-48 hours **Weaned:** 90+ days

**Colors:** 95% blk/bwf, 5% ch-x or red (exact colors announced sale day) **Flesh:** Medium

**Muscling:** 95% #1, 5% #1.5 **Frame:** Medium

**Nutrition:** TMR (silage, wet corn gluten, gin trash, soyhulls) with free choice mineral and hay.

**Vaccinations:** Vista Once (1x), Vista 5 (1x), Vision 7 w/somnus (1x), Vision 7 (1x)

**Dewormer:** Cydectin, LongRange, Safeguard **Implants:** None

**Genetics:** 60-75% Angus, 25-40% continental. Sired by EBS Farms Angus & a couple SimAngus bulls out of Angus-X cows.

**Natural Status:** GAP-4; BeefCare; IMI Verified Natural; NHTC; SAV; Seller Affidavit. (GAP#15342; Exp. 9/29/22)

**Comments:** Broke to bunks and waters. BQA Certified. **Buyer can take both loads or one load (gate cut).** A very good set of calves that grow and grade well. Natural certifications are complete and will transfer at no cost to buyer.

**MACS Rep:** Marcus Harward, 704-322-0840

**Programs:**





**Lot 1410 2 Loads of STEERS**

Price: \$ \_\_\_\_\_ Buyer # \_\_\_\_\_

**HRW Farms #1**  
 Thurmond, NC - 10 miles north of Elkin, NC



**Home-Raised, GAP-4, Verified Natural, Backgrounded, Weaned**

**Base Weight: 825 lbs. Wt. Stop: 860 lbs. Variance: 150 lbs.**

**Pickup Date:** November 15-19 **Estimated Head Count** 118

**Slide/Shrink:** 2% shrink and slide \$5/cwt topside only

**Weigh:** Certified ground scales at farm

**Notice to load:** 48 hours **Weaned:** 90+ days

**Colors:** 50% blk/bwf, 45% char-x, 5% red/rwf

**Flesh:** Medium

**Muscling:** 95% #1, 5% #1.5

**Frame:** 90% Med, 10% Large

**Nutrition:** Bunk fed 15# ph/pd of 14% feed and silage with free choice mineral and hay and on a 10 acre pasture.

**Vaccinations:** Bovi-Shield Gold One Shot (1x), Bovi-Shield Gold 5 (1x), Alpha 7 (1x), Vision 7 20/20 (1x)

**Dewormer:** Dectomax **Implants:** None

**Genetics:** Sired by Charolais, Angus, and SimAngus bulls out of crossbred cows. All chars are crossbred with a black nose or gray/yellow, no purebred pink-noses.

**Natural Status:** GAP-4; IMI Verified Natural; NHTC; Source & Age; Seller Affidavit. (GAP#15901; Exp. 3/19/22)

**Comments:** Broke to bunks and waters. Home-raised, high-growth steers with Charolais and Angus genetics. Reputational calves from a very good program. Certifications can transfer at no cost. Will be EID tagged prior to shipment if needed.

**MACS Rep:** Marcus Harward, 704-322-0840



**Watch and Bid online**



To view the sale or bid online, visit [www.DVAuction.com](http://www.DVAuction.com). Find the "Mid-Atlantic Cattle Sales (Richfield, NC)" sale and click on "Details." From this page you can view the catalog, videos, or log in to watch the sale. If you have an account, log in and view the sale. If you do not, you must create an account under the "Create New Account" tab in the upper left hand corner of the screen. You will need to confirm this account through your e-mail.

**You DO NOT have to be approved for a buyer's number just to watch the sale but you will still need to create an account with DVAuction.**

**Lot 1411 1 Load of HEIFERS**

Price: \$ \_\_\_\_\_ Buyer # \_\_\_\_\_

**Donald Chriscoe Farm**

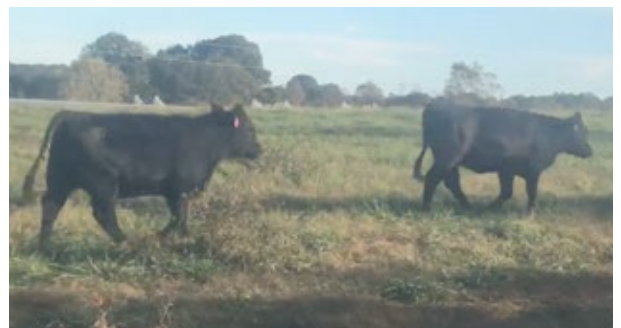
Asheboro, NC - 40 miles south of Greensboro, NC

**Affidavit Natural, Backgrounded, Weaned****Base Weight: 700 lbs. Wt. Stop: 735 lbs. Variance: 150 lbs.****Pickup Date:** November 3-12**Estimated Head Count** 69**Slide/Shrink:** 2% shrink and slide \$5/cwt topside only**Weigh:** Certified ground scales at farm**Notice to load:** 24-48 hours**Weaned:** 90+ days**Colors:** 90% blk/bwf, 10% red or ch-x (exact colors announced sale day) **Flesh:** Medium**Muscling:** 95% #1, 5% #1.5**Frame:** Medium**Nutrition:** Bunk fed haylage and DDG TMR with access to mineral, hay, and pasture**Vaccinations:** Vista 5 (2x), Nuplura (1x), Vision 7 20/20 (1x), Ocuguard Pinkeye (1x)**Dewormer:** Ivomec Inject. (2x)**Implants:** None**Genetics:** Angus-X commercial. Mainly sired by Angus and SimAngus bulls.**Natural Status:** Seller Affidavit**Heifers Open:** Palpated, guaranteed open.**Comments:** Broke to bunks and waters. Reputational calves purchased from local producers and backgrounded at Chriscoe's for 90+ days. Owner affidavit natural - signed Meyer's affidavits from original producers.**MACS Rep:** Marcus Harward, 704-322-0840**Programs:****Natural AFFIDAVIT****Lot 1412 1 Load of HEIFERS**

Price: \$ \_\_\_\_\_ Buyer # \_\_\_\_\_

**W D C Co (Kelly Lasey)**

Taylorsville, NC - 20 miles northwest of Statesville, NC

**Backgrounded, Weaned, Guaranteed Open****Base Weight: 700 lbs. Wt. Stop: 735 lbs. Variance: 125 lbs.****Pickup Date:** November 3-9**Estimated Head Count** 69**Slide/Shrink:** 2% shrink and slide \$5/cwt topside only**Weigh:** Goosenecked 5 miles, sorted, and weighed on certified ground scales**Notice to load:** 48 hours**Weaned:** 90+ days**Colors:** 90% blk/bwf, 3 hd ch-x, 3-4 red red/rwf**Flesh:** Medium**Muscling:** 95% #1, 5% #1.5**Frame:** Medium**Nutrition:** Bunk fed 6 lbs 14% CPC feed. Free choice mineral, pasture, and hay. MIX 30 protein supplement.**Vaccinations:** Vista Once (1x), Vista 5 (1x), Vision 7 w/somnus (2x), Nasalgen IP (1x)**Dewormer:** Safeguard (1x), Dectomax (1x)**Implants:** None**Genetics:** Angus-X commercial. No Hereford or pink nose char.**Natural Status:** No**Heifers Open:** Vet palpated, guaranteed open.**Comments:** Broke to bunks and waters. A very nice load of heifers that were purchased and backgrounded together on pasture for over 90 days. There are about 90 head in this group to sort a load out of.**MACS Rep:** Jimmy Dagenhart, 704-425-3587**Programs:****PrimeVAC**  
BY MERCK ANIMAL HEALTH

HEIFERS

Mid-Atlantic Cattle Sales - Tuesday, November 2, 2021 - 1:00 pm edt

**Lot 1413 1 Load of HEIFERS**

Price: \$ \_\_\_\_\_ Buyer # \_\_\_\_\_

**HRW Farms #2**  
Thurmond, NC - 10 miles north of Elkin, NC

Home-Raised, GAP-4, Verified Natural, Backgrounded, Weaned

Base Weight: 740 lbs. Wt. Stop: 775 lbs. Variance: 150 lbs.

Pickup Date: November 15-19 **Estimated Head Count** 66  
Slide/Shrink: 2% shrink and slide \$5/cwt topside only  
Weigh: Certified ground scales at farm  
Notice to load: 48 hours **Weaned:** 90+ days

Colors: 20% blk/bwf, 80% char-x

Muscling: 95% #1, 5% #1.5

Nutrition: Bunk fed 15# ph/pd of 14% feed and silage with free choice mineral and hay and on a 10 acre pasture.

Vaccinations: Bovi-Shield Gold One Shot (1x), Bovi-Shield Gold 5 (1x), Alpha 7 (1x), Vision 7 20/20 (1x)

Dewormer: Dectomax **Implants:** None

Genetics: Sired by Charolais, Angus, and SimAngus bulls out of crossbred cows. All chars are crossbred with a black nose or gray/yellow, no purebred pink-noses.

Natural Status: GAP-4; IMI Verified Natural; NHTC; Source & Age; Seller Affidavit. (GAP#15901; Exp. 3/19/22)

Heifers Open: Guaranteed open, not palpated.

Comments: Broke to bunks and waters. Home-raised, high-growth heifers with Charolais and Angus genetics. Reputational calves from a very good program. Certifications can transfer at no cost. Will be EID tagged prior to shipment if needed.

MACS Rep: Marcus Harward, 704-322-0840



**Flesh:** Medium

**Frame:** 90% Med, 10% Large

**Lot 1414 2 Loads of HEIFERS**

Price: \$ \_\_\_\_\_ Buyer # \_\_\_\_\_

**HRW Farms #1**  
Thurmond, NC - 10 miles north of Elkin, NC

Home-Raised, GAP-4, Verified Natural, Backgrounded, Weaned

Base Weight: 775 lbs. Wt. Stop: 810 lbs. Variance: 150 lbs.

Pickup Date: November 15-19 **Estimated Head Count** 125  
Slide/Shrink: 2% shrink and slide \$5/cwt topside only  
Weigh: Certified ground scales at farm  
Notice to load: 48 hours **Weaned:** 90+ days

Colors: 50% blk/bwf, 45% char-x, 5% red

Muscling: 95% #1, 5% #1.5

Nutrition: Bunk fed 15# ph/pd of 14% feed and silage with free choice mineral and hay and on a 10 acre pasture.

Vaccinations: Bovi-Shield Gold One Shot (1x), Bovi-Shield Gold 5 (1x), Alpha 7 (1x), Vision 7 20/20 (1x)

Dewormer: Dectomax **Implants:** None

Genetics: Sired by Charolais, Angus, and SimAngus bulls out of crossbred cows. All chars are crossbred with a black nose or gray/yellow, no purebred pink-noses.

Natural Status: GAP-4; IMI Verified Natural; NHTC; Source & Age; Seller Affidavit. (GAP#15901; Exp. 3/19/22)

Heifers Open: Guaranteed open, not palpated.

Comments: Broke to bunks and waters. Home-raised, high-growth heifers with Charolais and Angus genetics. Reputational calves from a very good program. Certifications can transfer at no cost. Will be EID tagged prior to shipment if needed.

MACS Rep: Marcus Harward, 704-322-0840



**Flesh:** Medium

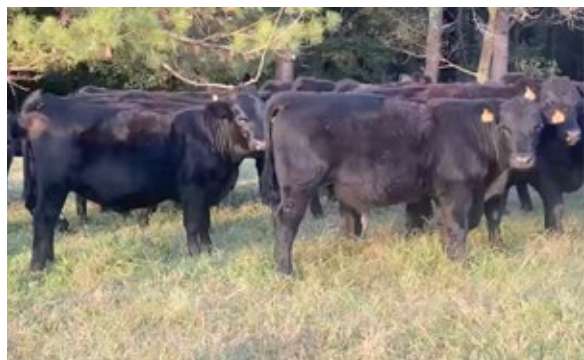
**Frame:** 90% Med, 10% Large

Cattle that are picked up after the stated delivery dates will be subject to a 2% per day increase on the base weight and any weight stops for each day late after the last stated delivery date.

**Lot 1415** 1 Load of STRS/HFRS

Price: \$ \_\_\_\_\_ Buyer # \_\_\_\_\_

**Griffin Farms (David Griffin)**  
Castalia, NC - 50 miles northeast of Raleigh, NC



**Home-Raised, GAP-4, Natural, Backgrounded, Weaned**  
~38 Steers Wt: 740 lbs. Wt. Stop: 775 lbs. Variance: 175 lbs.  
~30 Hfrs Wt: 700 lbs. Wt. Stop: 735 lbs. Variance: 200 lbs.  
**Heifers sell \$6/cwt back**

**Pickup Date:** November 15-19  
**Slide/Shrink:** 2% shrink and slide \$5/cwt topside only  
**Weigh:** Hauled 10 miles, weighed on certified scales  
**Notice:** 72 hours **Weaned:** 90+ days  
**Colors:** 90% blk/bwf, 2-3 hd ch-x, 4-5 hd rwf  
**Muscling:** 95% #1, 5% #1.5  
**Nutrition:** Bunk fed 5 lbs 14% Bartlett commodity feed with free choice mineral, pasture, and hay  
**Vaccinations:** Bovi-Shield Gold One Shot (1x), Bovi-Shield Gold FP5 (1x), Vision (2x)  
**Dewormer:** Safeguard (1x), Ivermectin Pour-On (1x) **Implants:** None  
**Genetics:** 50% Angus, 50% continental. Sired by Angus, SimAngus, or Balancer bulls out of Angus-X cows.  
**Natural Status:** GAP-4 (Pending audit); Seller Affidavit **Heifers Open:** Guaranteed open, not palpated.  
**Comments:** Broke to bunks and waters. A very good set of home-raised cattle with high docility and growth. Hand fed steers and heifers running on a good forage program as well. Will hold an extra week if needed to ensure natural verifications.  
**MACS Rep:** Will Edwards, 919-449-8064

**Flesh:** Medium  
**Frame:** Medium

Programs:



**Lot 1416** 1 Load of STRS/HFRS

Price: \$ \_\_\_\_\_ Buyer # \_\_\_\_\_

**Big "O" Farms (Brian & Greg Callaway)**  
Washington, GA - 50 miles northwest of Augusta, GA



**Home-Raised, GAP-4, Natural, Backgrounded, Weaned, BQA**  
~46 Steers Wt: 730 lbs. Wt. Stop: 765 lbs. Variance: 150 lbs.  
~28 Hfrs Wt: 665 lbs. Wt. Stop: 700 lbs. Variance: 150 lbs.  
**Heifers sell \$6/cwt back**

**Pickup Date:** November 8-12  
**Slide/Shrink:** 2% shrink and slide \$5/cwt topside only  
**Weigh:** Certified MACS ground scales at farm  
**Notice:** 48 hours **Weaned:** 60+ days  
**Colors:** 90% blk/bwf, 10% ch-x, (3 hd spotted)  
**Muscling:** 95% #1, 5% #1.5  
**Nutrition:** Bunk fed 8-9# of Ogleshorpe 15% grower feed with free choice mineral, pasture, ryegrass dry hay, & oat baleage.  
**Vaccinations:** Pyramid 5 + Presponse (2x), Vira Shield 6 L5 HB (1x), Vision 7 w/somnus (2x)  
**Dewormer:** Eprinex (2x), Synanthic (1x) **Implants:** None  
**Genetics:** Sired by Angus and Ultrablack bulls from Blackwater Cattle & Char-No Farms and out of Angus-X and Char-X cows. 3 speckled calves (2 hfrs, 1 str), grand-dams are Speckle Park but dams are black and calves are sired by Angus or Ultrablack bulls.  
**Natural Status:** GAP-4; Seller Affidavit **Heifers Open:** Vet palpated, guaranteed open.  
**Comments:** Broke to bunks & waters. Docile. Born Jan-March. A very good group of all-natural feeders. GAP can transfer at no cost to buyer. (GAP#15974; Exp. 9/26/22)  
**MACS Rep:** David Landreth, 864-444-8214

**Flesh:** Medium  
**Frame:** Medium

Programs:



# MID-ATLANTIC CATTLE SALES

WWW.MACSVIDEO.COM



## UPCOMING SALES

November 2

November 16

December 7

*\*No sale the third Tuesday in December\**

January 4, 2022

January 18, 2022

February 1, 2022

February 15, 2022

*Our motto - Working hard for you today and every day!*

# Add **HYBRID VIGOR** to Your Herd with Stabilizers!

The science is proven. Hybrid cows breed up better, live longer, and wean 23% more pounds per cow exposed. If you've been using Angus (or Red Angus) bulls for years – it is time to turn out Leachman Stabilizers. These bulls offer hybrid vigor, feed efficiency, and selection for fertility. Our Zoetis Fertility EPD lets you pick bulls that will dramatically improve your herd's calf crop percentage. We even have udder quality EPDs on every bull. **Don't settle for an average bull when you could improve your profitability with a Leachman Stabilizer bull.**



David Talley, Lee Leachman, and Windell Talley.  
The Talley family has been buying Leachman genetics for over 25 years.



K233H

**He Sells!**



M166H

**He Sells!**



M182H

**He Sells!**

## Leachman East Coast Stabilizer Sale 70 Age-Advantaged Stabilizer Bulls

1:30 p.m. (EST), Saturday, Nov. 20, 2021

Wythe County Livestock Exchange  
Wytheville, VA

Also Offering: 60 Bred Heifers

For more information, call David Talley at (704) 791-1385.

### Schedule of Events:

- 8:30 am View offering
- 11:00 am Complimentary lunch
- 1:00 pm Keys to Profit Seminar
- 1:30 pm Stabilizer Sale**



**New Location!**

To view or order your sale catalog, visit us at [www.leachman.com](http://www.leachman.com)



All bulls sell with a breeding season guarantee!



Lee Leachman, Managing Partner  
Jerrod Watson, Bull Customer Service (303) 827-1156  
Office: (970) 568-3983 • [www.leachman.com](http://www.leachman.com)  
Leachman East Coast Division:  
David Talley (704) 791-1385 • Samantha Talley (704) 322-9974  
Mike Anderson, Wythe County Livestock (276) 623-5900



# 13<sup>TH</sup> ANNUAL BULL & REPLACEMENT FEMALE SALE

# SIMANGUS OLUTION

**November 6, 2021**

**Saturday • 12:00 noon**

**At Circle M Cattle Farm**

1078 Boone Road  
Burlington, NC

For more information  
or to request a sale catalog, contact:

**Jonathan Massey**

336-260-2565 • [jonathan.massey2@gmail.com](mailto:jonathan.massey2@gmail.com)

**Johnny Massey**

336-214-4144 • [johnnymassey.1@gmail.com](mailto:johnnymassey.1@gmail.com)



**[simangussolution@gmail.com](mailto:simangussolution@gmail.com)**

**GENETICS**

**FERTILITY**

**SERVICE**



**CHOOSE THE TEAM THAT'S  
GOING TO BE THERE FOR YOU FROM START TO FINISH.**



**LET OUR A.I. PROFESSIONALS WORK FOR YOU. CONTACT US TODAY!**



# Sale Terms and Conditions

1. Each bidder must be pre-registered and have a Buyer Number to participate in the auction. To register for the auction call 704-322-9770 or register through DV Auction. By participating in the auction the Buyer expressly agrees to adhere to these Terms and Conditions and to the provisions set forth in the Livestock Purchase Agreement sent after the auction. All cattle being offered for sale are under standard Contracts for Sale. All cattle are purchased under standard Contracts for Purchase by the Buyers.
2. The cattle offered for sale are indicated on the sale sheets or online sale description as described to the MACS representatives by the owner. They are described by lot numbers, seller, location of cattle, numbers of head, estimated weight, management practices, delivery date, conditions of sale and delivery, and verified programs. Representatives for each load are listed under each respective lot. Every effort has been made to assure the correctness of this information but all announcements from the auctioneer or official auction staff prior to or during the sale shall take precedence over printed matter herein.
3. Auction bids will be taken as voice bids by telephone and in person or online bids through DV Auction. Bids are asked with each lot of cattle and will be sold to the highest bidder on the basis of estimated weight. Seller reserves the right to "no sale" the load lot(s) of his cattle at the time the highest bid is made as long as the "no sale" announcement is made prior to the next lot being sold. Any departure from this procedure will be announced and all announcements made from the auctioneer or official auction staff will take precedence over printed matter herein.
4. The Auctioneer reserves the right to reject any and all bids. Auctioneer will settle all disputed bids. If a dispute arises between two or more bidders the Auctioneer may immediately put the lot up for sale again and resell to the highest bidder. The decision of the Auctioneer shall be final and absolute.
5. One full load of stocker or feeder cattle will be contracted for approximately 48,000 lbs. and the respective head count at the base weight at the full truckload weight. No freight adjustment will be given if the average weight at delivery is under the base weight and the head count delivered is within 95% of the contracted head count. Mid-Atlantic Cattle Sales and its representatives will act as agents only in the sale of lots of cattle. As the marketing agency we cannot guarantee a minimum or maximum amount of shrink on any load. Any weight guarantees in regards to shrink must be given by Seller. Mid-Atlantic Cattle Sales cannot guarantee off truck weights.
6. Cattle that are picked up after the stated delivery dates will be subject to a 2# per head per day increase on the base weight and any weight stops for each day late after the last stated delivery date.
7. Most loads have weight stops at 25-50 lbs. over the base weight. The individual weight stops are posted on each lot. All cattle will be sold on a sliding scale as listed on each load.
8. On split loads the heifer price will be \$\_\_\_/cwt (as stated in the lot information) back of the original price of the steers.
9. The Buyer is responsible for all arrangements and regulatory requirements with respect to the transportation of the livestock and the Buyer is responsible for sending trucks to adequately load the number of head and/or the total weight contracted in order to legally transport them to their final destination. Cattle sold will be sorted and delivered to the stated weigh point by the Seller and weighed on a certified scale. Buyer will receive the cattle at point of weighing under conditions as stated with respect to each lot. Buyer will take ownership of the cattle at the point of loading.
10. Health entry requirements for the state of entry are the responsibility of the Buyer. The Seller will furnish any health certificates required for the state of origin and Federal Law. If additional health certificates, documentation or tests are required for shipment to the Buyer's destination, it shall be at the Buyer's request and expense.
11. Any heifer that is sold as guaranteed open and is determined to be bred by the buyer will receive a \$200 per bred heifer refund given appropriate documentation is provided within 60 days of the cattle being delivered. Documentation must include lot information, heifer identification, and veterinarian documentation.
12. Payment by Buyer is due and payable in accordance with USDA P&S prompt pay policy upon delivery of the cattle and at such times as the value of the cattle is determined based on weight (subject to condition), price (subject to condition), and any other conditions stated at time of sale. Payment must be sent to Mid-Atlantic Cattle Sales the day after they are received by the Buyer. We request that all payments be sent by Wire Transfer, ACH, or overnight delivery of a check via FedEx or UPS. Payment sent via the U.S. Postal Service (1st Class or Priority Mail) are expected to be received within 7 business days of delivery. Any fees incurred for sending payment will be at the Buyer's expense.
13. Mid-Atlantic Cattle Sales does not warrant the harvest date on source and age verified cattle and cannot guarantee back verification on any program requiring signed affidavits or 3rd party verification. Mid-Atlantic Cattle Sales will make all efforts to ensure verifications are met, but it is the Buyer's responsibility to verify all claims of the Seller to fit specific programs prior to purchase.
14. There are no implied warranties of merchantability or fitness for a particular purpose on any livestock sold. Seller does not warrant that the livestock are free from any latent defect, condition, sickness, or disease. Seller does not assume responsibility for any loss after the livestock are delivered, which results from any latent defect, condition, sickness, or disease.



Marcus Harward: 704-322-0840  
Brooke Harward: 704-322-9770

[info@macsvideo.com](mailto:info@macsvideo.com)  
[www.MACSVideo.com](http://www.MACSVideo.com)

28978 Misenheimer Rd • Richfield, NC 28137